

Stockholm Economy Q1 2015

June 2015



Photo: Henrik Trygg

Stockholm Economy

Q1 2015

About the report

The report includes Stockholm County and the City of Stockholm.

The report is published each quarter by Stockholm Business Region.

The report can be downloaded from:

<http://www.stockholmbusinessregion.se/en/facts--figures/#facts-about-business>

Statistics used is collected from Statistics Sweden, The Labour Exchange and The Swedish Companies Registration Office.

In this report, where mentioned, the Stockholm Region is defined as Stockholm County, Uppsala County, Gävleborg County, Västmanland County, Örebro County and Södermanland County

Questions can be addressed to Stefan Frid at Stockholm Business Region Development. Publisher: Olle Zetterberg.

Positive figures for Stockholm

Stockholm's positive development continues during the first quarter of 2015. Aggregated gross pay data show positive growth figures both for Stockholm County as well as the City of Stockholm compared with the same quarter 2014.

6 283 new companies were registered in Stockholm County during the first quarter 2015, whereof the City of Stockholm accounted for 3 853. The City figure represents a 10% increase compared to the first quarter 2014.

The number of people employed has increased during the last quarter. The number of listed positions increased as well as the number of people given notice. The unemployment rate decreased both in Stockholm County and the City of Stockholm compared with the same quarter 2014.

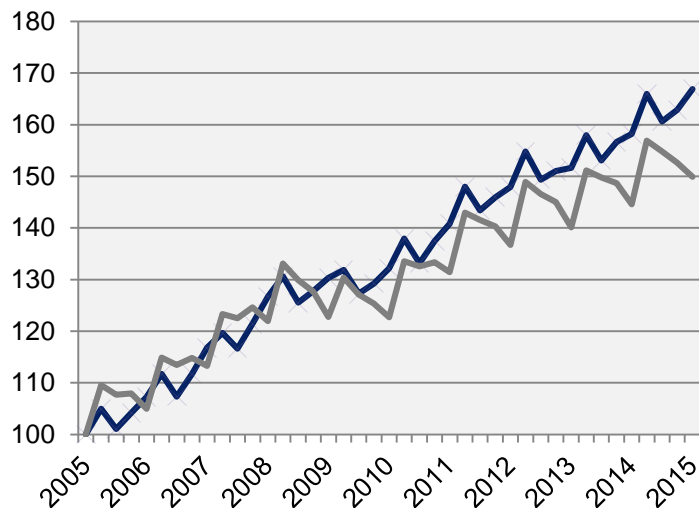
The last four quarters the number of residents has increased by 33 600 in Stockholm County, of which the City of Stockholm accounted for 13 200.

The number of housing projects decreased in the last quarter. In total 13 000 apartments were started in Stockholm County during the last four quarters, whereof about 3 900 in the City of Stockholm.

Olle Zetterberg
CEO Stockholm Business Region

Economic growth, private sector

Index 100 = 2005 Q1



Source: Statistics Sweden

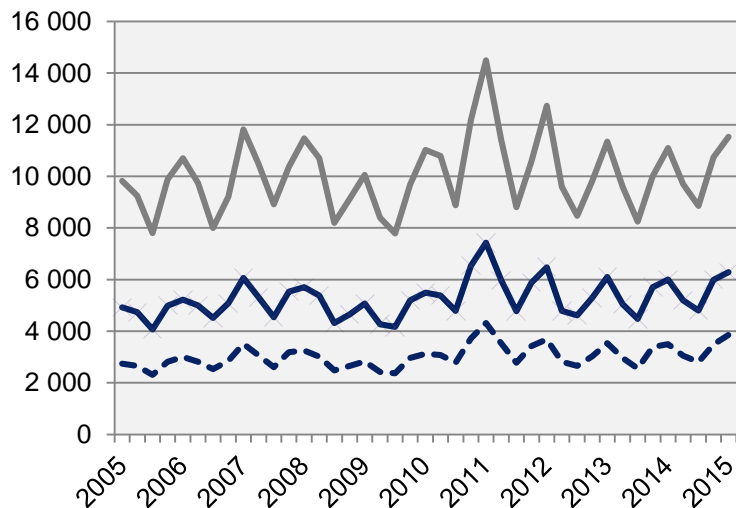
	2015 Q1	Change (%) since,		
	<i>Billion cr.</i>	2005 Q1	2010 Q1	2014 Q1
Sweden	274,3	55,2	23,5	4,3
Stockholm Region	124,5	63,0	25,5	5,0
Stockholm county	92,2	66,9	26,3	5,5
City of Stockholm	60,7	n.a	28,8	6,8
Sweden, excl. Stockholm county	182,1	49,9	22,2	3,7

 Stockholm county

Economic growth, 2015 Q1

	Stockholm county				City of Stockholm			
	<i>Billion cr.</i>	Growth (%) since,			<i>Billion cr.</i>	Growth (%) since,		
		2009 Q1	2010 Q1	2014 Q1		2009 Q1	2010 Q1	2014 Q1
Total	112,5	26,9	25,3	5,3	70,4	28,6	26,6	6,3
Agriculture, forestry & fishing	0,1	35,2	19,4	14,6	0,0	78,3	17,0	8,9
Manufacturing, mining, quarrying & utilities	8,7	6,7	10,7	1,3	4,2	10,2	10,5	5,5
Energy & Environment	1,0	28,7	27,1	-1,5	0,4	-19,7	-9,9	9,8
Construction	6,1	37,2	32,9	6,4	2,9	49,7	62,9	22,5
Trade	14,8	24,5	19,1	3,5	8,4	29,8	22,2	3,5
Transport	5,0	14,8	11,0	1,2	2,3	17,6	11,2	-2,0
Accommodation & food services	3,0	59,0	47,8	7,1	2,2	60,3	50,6	8,3
Information & communication	11,3	21,3	25,5	6,8	9,4	27,0	31,8	9,9
Financial & insurance	9,4	17,4	19,8	7,3	7,5	13,4	15,8	2,5
Real Estate	1,9	37,5	32,8	9,5	1,3	37,7	34,7	10,8
Business services	17,4	37,7	37,3	7,8	13,8	38,4	38,4	8,2
Public administration	0,1	34,1	21,4	-3,7	0,1	27,0	19,4	1,9
Education	2,6	48,2	40,8	6,0	1,5	49,0	42,6	6,0
Health	7,0	63,0	46,1	7,5	4,0	59,2	40,1	7,3
Personal & cultural services	3,6	32,8	27,0	3,6	2,7	32,0	25,5	3,2
Unspecified	0,2	-17,3	-1,7	20,8	0,0	25,5	-0,2	5,0
Private sector	92,2	28,1	26,3	5,5	60,7	30,2	28,8	6,8
State	8,0	27,3	24,1	3,0	5,5	21,9	17,4	2,4
Municipal	9,1	18,3	16,6	5,1	3,4	13,2	10,7	5,0
County council	3,2	19,3	25,7	5,4	0,8	25,9	14,5	4,0
Public sector	20,3	21,8	20,8	4,3	9,7	19,0	14,7	3,4

The number of newly registered businesses

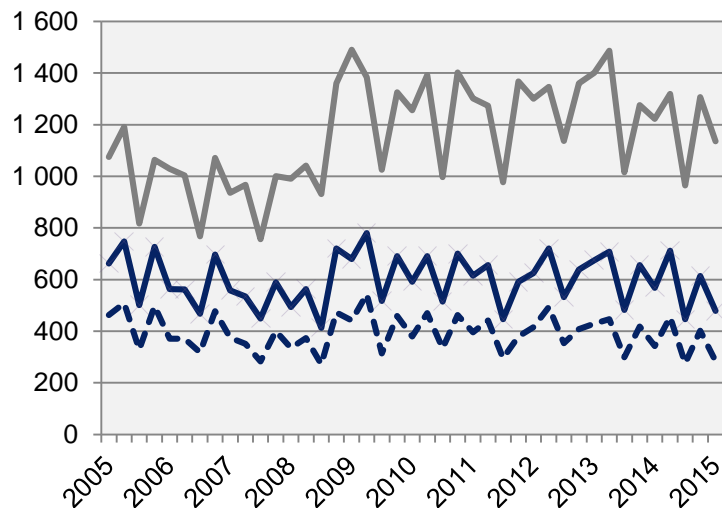


	2015 Q1		Yearly change*	
	Number	Ch., %	Number	Ch., %
Sweden	17 810	4,2	63 087	4,8
Stockholm Region	8 388	5,3	29 643	5,3
Stockholm county	6 283	4,8	22 267	4,9
City of Stockholm	3 853	10,0	13 186	6,3
Sweden, excl. Stockholm county	11 527	3,9	40 820	4,8

*Last four quarters

 Stockholm county

Company bankruptcies



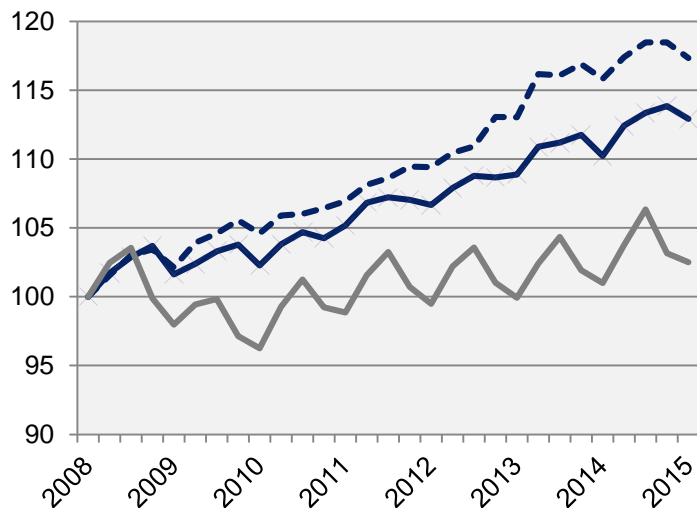
	2015 Q1		Yearly change*	
	Number	Ch., %	Number	Ch., %
Sweden	1 615	-9,8	6 978	-5,9
Stockholm Region	720	-6,6	3 141	-4,9
Stockholm county	479	-15,7	2 251	-6,8
City of Stockholm	284	-17,0	1 416	-6,0
Sweden, excl. Stockholm county	1 136	-7,1	4 727	-5,5

*Last four quarters

 Stockholm county

Employment rate

Index 100 = 2008 Q1



	Number	Growth	Growth (%) since,		
	2015 Q1	Yearly ch.*	2008 Q1	2010 Q1	2014 Q1
Sweden	4 739 900	80 500	4,9	7,4	1,7
Stockholm Region	1 838 200	40 900	9,1	8,9	2,3
Stockholm county	1 156 400	27 700	12,9	10,4	2,5
City of Stockholm	510 800	6 600	17,3	12,2	1,3
Sweden, excl. Stockholm county	3 583 500	52 800	2,5	6,5	1,5

— Stockholm county

- - - City of Stockholm

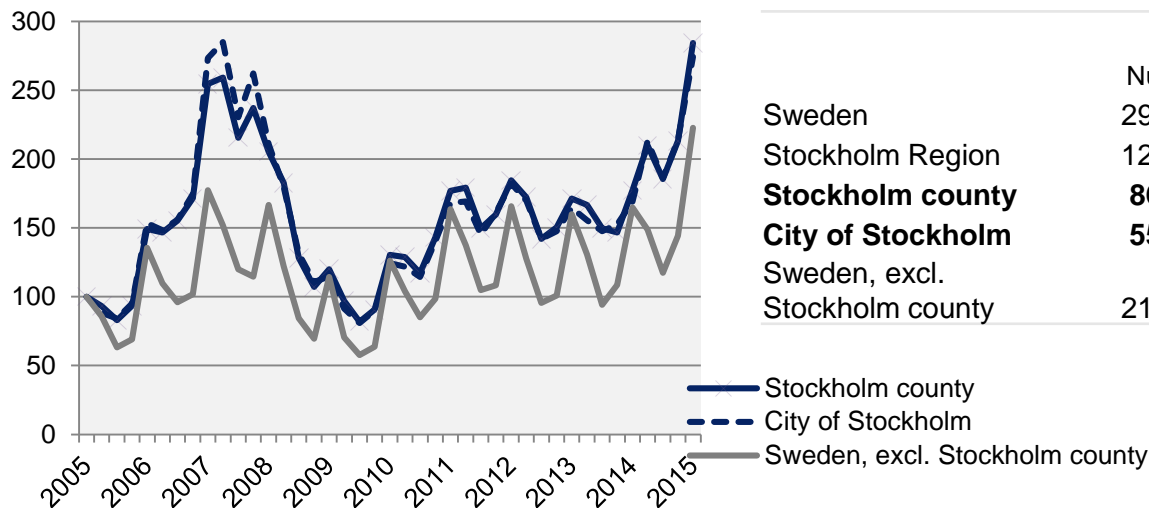
*Last four quarters

The number of employed people in Stockholm County

	Antal	Förändring	Förändring (%) sedan,		
	2015 Q1	Årstakt*	2008 Q1	2010 Q1	2014 Q1
Total	1 156 400	27 700	12,9	10,4	2,5
Agriculture, forestry & fishing	5 400	1 000	68,8	68,8	22,7
Manufacturing, mining, quarrying & utilities	56 400	6 800	-3,1	-3,4	13,7
Manufacturing of workshop products	25 200	3 000	-11,9	-16,0	13,5
Construction	60 400	1 000	0,7	6,3	1,7
Trade	143 000	11 700	6,4	12,4	8,9
Transport	53 900	-3 900	1,5	-1,1	-6,7
Accommodation & food services	39 600	-1 800	10,6	6,7	-4,3
Information & communication	91 900	6 300	20,3	16,0	7,4
Arts, entertainment, recreation & other services	69 700	-2 500	11,5	8,9	-3,5
Financial & insurance	286 200	4 700	18,7	11,4	1,7
Public administration	81 700	3 500	25,9	14,3	4,5
Education	123 800	5 500	17,9	12,2	4,6
Health	136 400	-2 700	9,9	11,1	-1,9
Unspecified	2 500	-1 100			-30,6
Employed in Sweden	1 150 800	28 400	12,8	10,3	2,5
Employed abroad	5 600	-700	64,7	51,4	-11,1

Number of recently listed positions

Index 100 = 2005 Q1

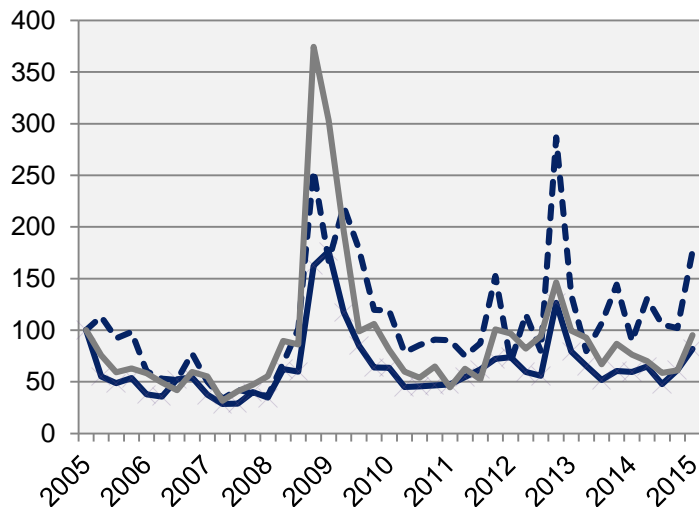


	2015 Q1		Yearly growth*	
	Number	Ch., %	Number	Ch., %
Sweden	297 742	41,5	872 420	30,7
Stockholm Region	125 007	54,2	382 813	36,4
Stockholm county	86 259	60,4	270 946	39,4
City of Stockholm	55 524	62,2	179 563	42,0
Sweden, excl. Stockholm county	211 483	35,0	601 474	27,1

*Last four quarters

The number of people given notice

Index 100 = 2005 Q1



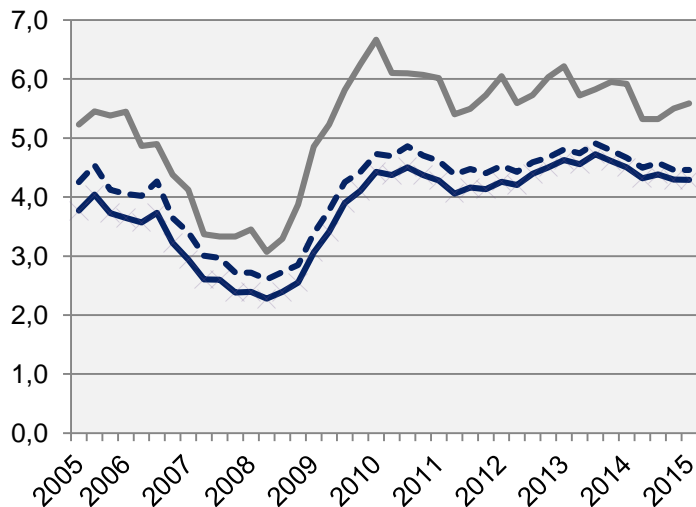
Source: The Labor Exchange

	2015 Q1		Yearly change*	
	Number	Ch., %	Number	Ch., %
Sweden	16 760	28,0	50 745	-7,1
Stockholm Region	7 337	59,0	21 268	2,6
Stockholm county	4 387	37,4	13 692	7,7
City of Stockholm	2 595	97,9	7 565	22,7
Sweden, excl. Stockholm county	12 373	25,0	37 053	-11,6

 Stockholm county

*Last four quarters

Unemployment in relation to the population (%), 15-74 years



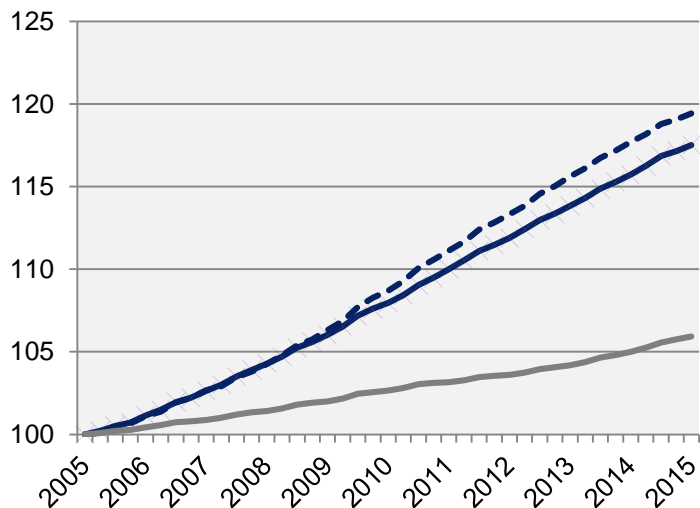
	Number	Yearly change*	<i>Unemployed out of population, 15-74 years</i>		
	2015 Q1		2010 Q1	2014 Q1	2015 Q1
Sweden	384 286	-19 043	6,2	5,6	5,3
Stockholm Region	134 709	-5 823	5,5	5,2	4,9
Stockholm county	71 095	-2 487	4,4	4,5	4,3
City of Stockholm	31 420	-988	4,7	4,7	4,5
Sweden, excl. Stockholm county	313 191	-16 556	6,7	5,9	5,6

 Stockholm county

*Last four quarters

Population

Index 100 = 2005 Q1



Source: Statistics Sweden

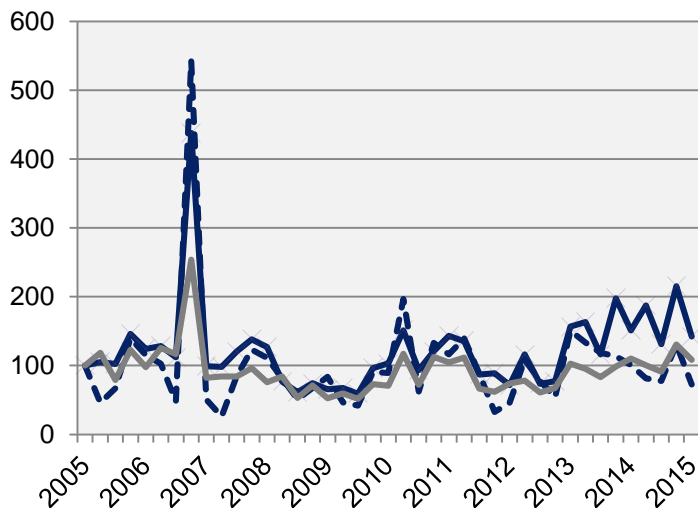
	2015 Q1 (in thousands)	Yearly ch. * (in thousands)	Growth (%) since,		
			2005 Q1	2010 Q1	2014 Q1
Sweden	9 767,4	100,5	8,3	4,4	1,0
Stockholm Region	3 667,7	47,3	12,8	6,8	1,3
Stockholm county	2 205,1	33,6	17,5	8,9	1,5
City of Stockholm	914,9	13,2	19,4	9,9	1,5
Sweden, excl. Stockholm county	7 562,3	66,8	5,9	3,2	0,9

 Stockholm county

*Development last four quarters

Number of housing projects started

Index 100 = 2005 Q1



Source: Statistics Sweden

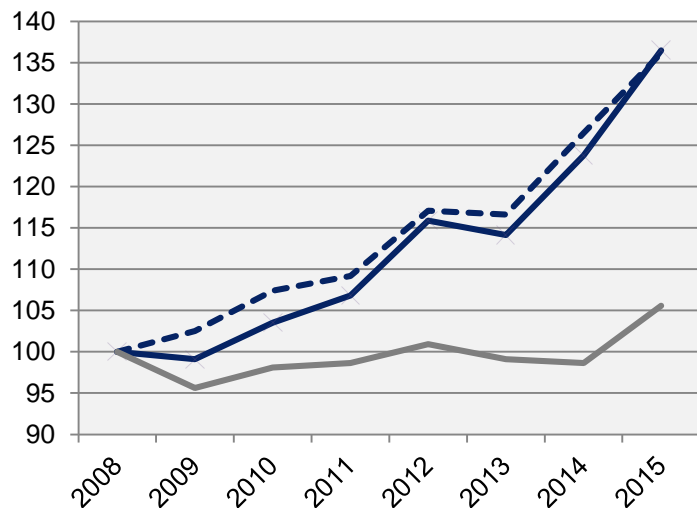
	2015 Q1		Yearly change*	
	Number	Ch., %	Number	Ch., %
Sweden	10 562	-2,8	44 112	10,2
Stockholm Region	4 464	-0,9	18 616	13,7
Stockholm county	2 741	-6,0	13 039	7,7
City of Stockholm	758	-28,2	3 786	-22,3
Sweden, excl. Stockholm county	7 821	-1,6	31 073	11,3

 Stockholm county

*Last four quarters

Commercial Accommodations

Index 100 = 2008 Q1 (Q1, 2008 - 2015)



	2015 Q1 (in thousands)	Yearly ch.*	Growth (%) since,		
			2008 Q1	2010 Q1	2014 Q1
Sweden	10 871	58 226	11,0	12,1	7,7
Stockholm Region	3 199	17 534	30,7	28,1	8,9
Stockholm county	2 353	12 402	36,5	31,9	10,3
City of Stockholm	1 567	8 061	36,1	26,8	7,6
Sweden, excl. Stockholm county	8 518	45 823	5,6	7,6	7,0

— Stockholm county
- - - City of Stockholm

*Development last four quarters

Stockholm Business Region

Stockholm Business Region is responsible for developing and promoting Stockholm as a business and tourist destination under the brand Stockholm - The Capital of Scandinavia.

The aim is to make Stockholm the leading sustainable growth region in Europe.

Stockholm Business Region is owned by the City of Stockholm and has two subsidiaries, Stockholm Business Region Development and Stockholm Visitors Board.

Stockholm Business Region

P.O. Box 16282

SE-103 25 Stockholm, Sweden

Phone + 46 8 508 280 00

www.visitstockholm.com

investstockholm.com

stockholmbusinessregion.se

