

Stockholm Economy Q2 2015

September 2015



Photo: Henrik Trygg

Stockholm Economy

Q2 2015

About the report

The report is published each quarter by Stockholm Business Region. The report includes Stockholm County and the City of Stockholm.

Statistics used is collected from Statistics Sweden, The Labour Exchange and The Swedish Companies Registration Office.

The report can be downloaded from:

<http://www.stockholmbusinessregion.se/en/facts--figures/#facts-about-business>

The Stockholm Region is defined as Stockholm County, Uppsala County, Gävleborg County, Västmanland County, Örebro County and Södermanland County. Individual county reports for the above mentioned can be found in Swedish here:

<http://www.stockholmbusinessalliance.se/konjunkturrapporter/>

Questions can be addressed to Vanessa Gisbert at Stockholm Business Region Development. Publisher: Olle Zetterberg.

Positive figures for Stockholm

Stockholm's economic growth continued during the second quarter of 2015. Aggregated gross pay data show positive growth figures both for Stockholm County as well as the City of Stockholm compared with the same quarter 2014.

5 321 new companies were registered in Stockholm County during the second quarter 2015, whereof the City of Stockholm accounted for 3 111. This represents a 3% increase for the county and 2% increase for the city compared to the second quarter 2014.

The number of people employed has increased during the last quarter. The number of listed positions increased and the number of people given notice decreased. The unemployment rate decreased both in Stockholm County and the City of Stockholm compared with the same quarter 2014.

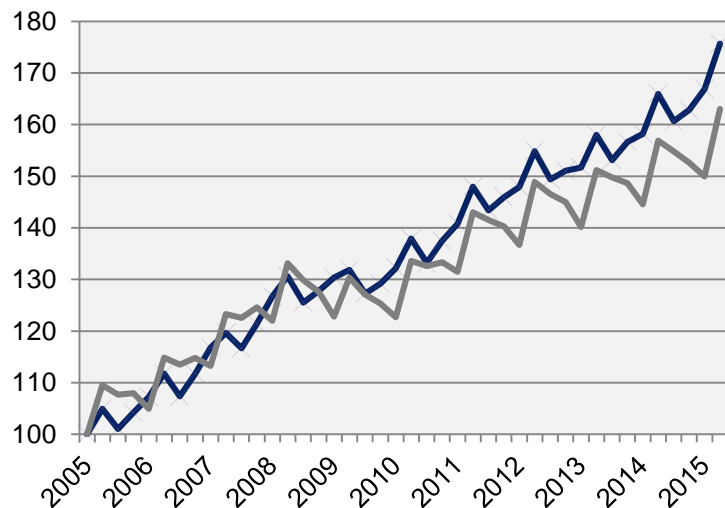
The last four quarters the number of residents has increased by 32 200 in Stockholm County, of which the City of Stockholm accounted for 12 100, representing a 1% increase in population for both regions.

The number of housing projects decreased in Stockholm County but increased in the City of Stockholm in the last quarter. In total 12 000 apartments were started in Stockholm County during the last four quarters, whereof about 3 800 in the City of Stockholm.

Olle Zetterberg
CEO Stockholm Business Region

Economic growth, private sector

Index 100 = 2005 Q1



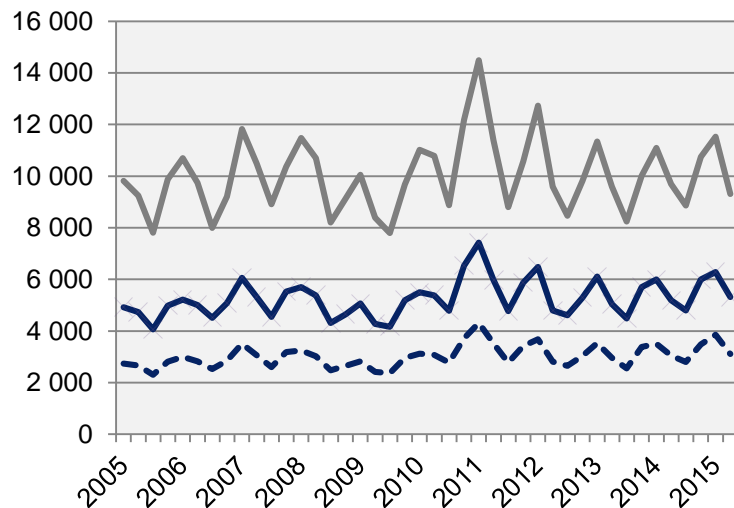
	2015 Q2	Change (%) since,		
	Billion cr.	2005 Q1	2010 Q1	2014 Q2
Sweden	295,1	67,0	32,9	4,5
Stockholm Region	132,2	73,0	33,3	5,5
Stockholm county	97,1	75,7	32,9	5,9
City of Stockholm	63,5	i.u.	34,6	5,6
Sweden, excl. Stockholm county	198,0	63,0	32,9	3,9

— Stockholm county

Economic growth, 2015 Q2

	Stockholm county				City of Stockholm			
	Billion cr.	Growth (%) since,			Billion cr.	Growth (%) since,		
		2009 Q1	2010 Q1	2014 Q2		2009 Q1	2010 Q1	2014 Q2
<i>Total</i>	118,0	33,1	31,4	5,4	73,4	34,1	32,1	5,2
Agriculture, forestry & fishing	0,2	60,6	41,8	5,8	0,0	109,6	37,6	3,0
Manufacturing, mining, quarrying & utilities	9,7	19,1	23,7	7,0	4,9	29,7	30,0	11,6
Energy & Environment	1,1	36,0	34,4	-4,5	0,4	-15,7	-5,4	2,3
Construction	7,1	59,8	54,8	8,2	3,4	76,4	91,9	8,9
Trade	15,2	27,9	22,3	3,7	8,5	31,5	23,8	3,7
Transport	5,4	23,4	19,2	3,1	2,6	30,1	23,1	8,6
Accommodation & food services	3,3	74,6	62,3	7,8	2,4	75,7	65,2	8,4
Information & communication	11,6	24,6	28,8	5,1	9,6	30,3	35,2	5,3
Financial & insurance	9,0	12,5	14,7	3,3	7,0	5,7	8,0	-5,7
Real Estate	2,2	58,8	53,4	7,0	1,5	55,4	52,1	8,3
Business services	18,2	44,2	43,8	8,2	14,4	44,5	44,4	9,2
Public administration	0,1	45,1	31,4	-4,2	0,1	38,7	30,4	2,9
Education	2,7	57,2	49,3	9,0	1,5	54,5	47,8	6,6
Health	7,3	68,2	50,7	8,2	4,1	64,4	44,6	7,0
Personal & cultural services	3,9	42,5	36,3	3,9	2,9	41,3	34,5	3,6
Unspecified	0,2	-10,0	6,9	6,3	0,0	30,0	3,4	36,8
Private sector	97,1	34,8	32,9	5,9	63,5	36,1	34,6	5,6
State	8,1	30,2	26,9	2,0	5,6	24,5	19,9	1,4
Municipal	9,6	24,1	22,3	4,7	3,5	18,4	15,8	4,5
County council	3,2	20,9	27,4	3,7	0,8	27,6	16,1	2,3
Public sector	20,9	25,8	24,8	3,5	10,0	22,5	18,1	2,5

The number of newly registered businesses

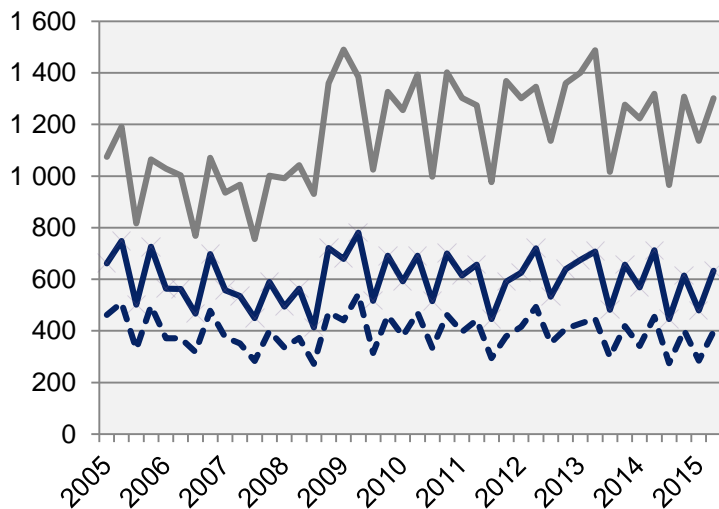


	2015 Q2		Yearly change*	
	Number	Ch., %	Number	Ch., %
Sweden	14 633	-1,7	62 834	4,0
Stockholm Region	7 018	1,5	29 748	4,9
Stockholm county	5 321	2,5	22 397	4,8
City of Stockholm	3 111	2,2	13 252	6,1
Sweden, excl. Stockholm county	9 312	-4,0	40 437	3,6

*Last four quarters

 Stockholm county

Company bankruptcies



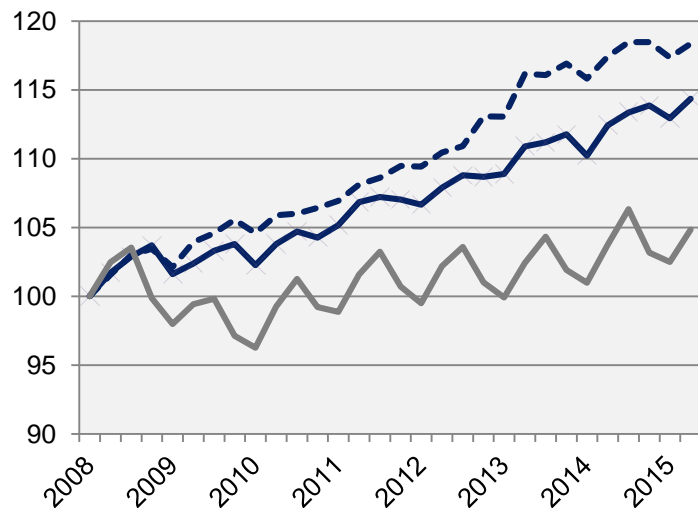
	2015 Q2		Yearly change*	
	Number	Ch., %	Number	Ch., %
Sweden	1 934	-4,8	6 881	-5,1
Stockholm Region	871	-9,0	3 055	-6,9
Stockholm county	633	-11,1	2 172	-10,2
City of Stockholm	398	-12,5	1 359	-10,2
Sweden, excl. Stockholm county	1 301	-1,4	4 709	-2,6

*Last four quarters

 Stockholm county

Employment rate

Index 100 = 2008 Q1



Source: Statistics Sweden

	Number	<i>Growth</i>	<i>Growth (%) since,</i>		
	2015 Q2	Yearly ch.*	2008 Q1	2010 Q1	2014 Q2
Sweden	4 836 600	58 000	7,0	9,6	1,2
Stockholm Region	1 866 600	30 700	10,8	10,5	1,7
Stockholm county	1 171 100	19 800	14,4	11,8	1,7
City of Stockholm	515 200	4 100	18,4	13,2	0,8
Sweden, excl. Stockholm county	3 665 500	38 200	4,8	8,9	1,1

— Stockholm county

- - - City of Stockholm

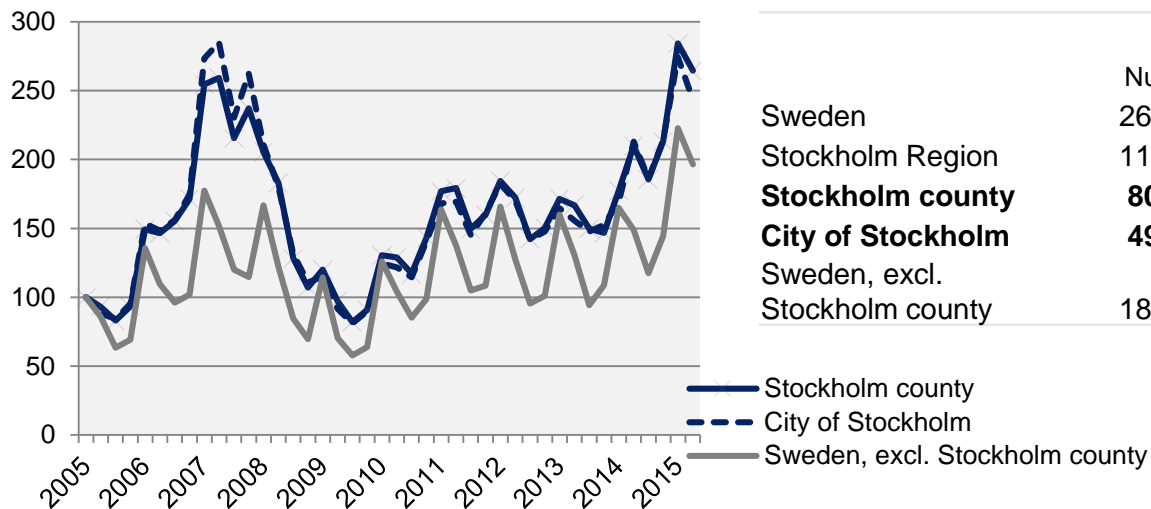
*Last four quarters

The number of employed people in Stockholm County

	Antal	Förändring	Förändring (%) sedan,		
	2015 Q2	Årstakt*	2008 Q1	2010 Q1	2014 Q2
Total	1 171 100	19 800	14,4	11,8	1,7
Agriculture, forestry & fishing	4 700	-200	46,9	46,9	-4,1
Manufacturing, mining, quarrying & utilities	57 600	6 900	-1,0	-1,4	13,6
Manufacturing of workshop products	26 800	5 400	-6,3	-10,7	25,2
Construction	63 100	5 200	5,2	11,1	9,0
Trade	138 600	3 100	3,1	9,0	2,3
Transport	58 400	5 000	10,0	7,2	9,4
Accommodation & food services	46 600	3 900	30,2	25,6	9,1
Information & communication	90 400	1 500	18,3	14,1	1,7
Arts, entertainment, recreation & other services	70 100	-3 700	12,2	9,5	-5,0
Financial & insurance	291 900	4 200	21,1	13,6	1,5
Public administration	81 900	1 100	26,2	14,5	1,4
Education	123 100	-3 300	17,2	11,6	-2,6
Health	138 200	-200	11,4	12,5	-0,1
Unspecified	1 500	-1 600			-51,6
Employed in Sweden	1 166 300	22 000	14,3	11,8	1,9
Employed abroad	4 800	-2 200	41,2	29,7	-31,4

Number of recently listed positions

Index 100 = 2005 Q1

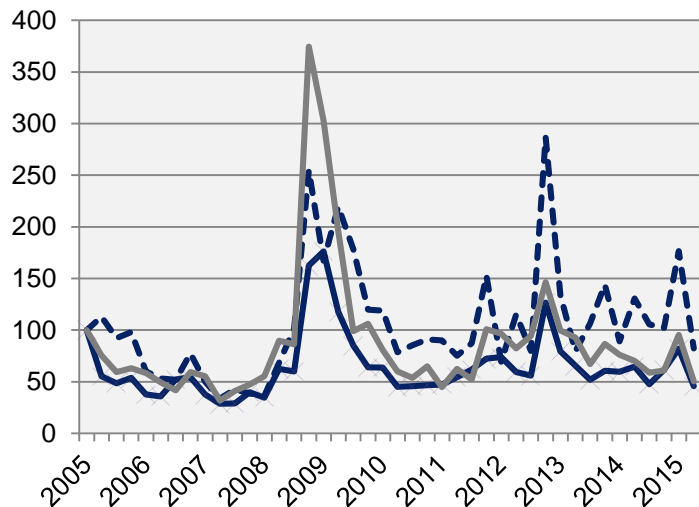


	2015 Q2		Yearly growth*	
	Number	Ch., %	Number	Ch., %
Sweden	266 836	30,2	934 265	33,9
Stockholm Region	113 239	24,3	404 929	36,4
Stockholm county	80 280	26,1	287 538	38,6
City of Stockholm	49 247	14,3	185 713	34,5
Sweden, excl. Stockholm county	186 556	32,0	646 727	31,8

*Last four quarters

The number of people given notice

Index 100 = 2005 Q1



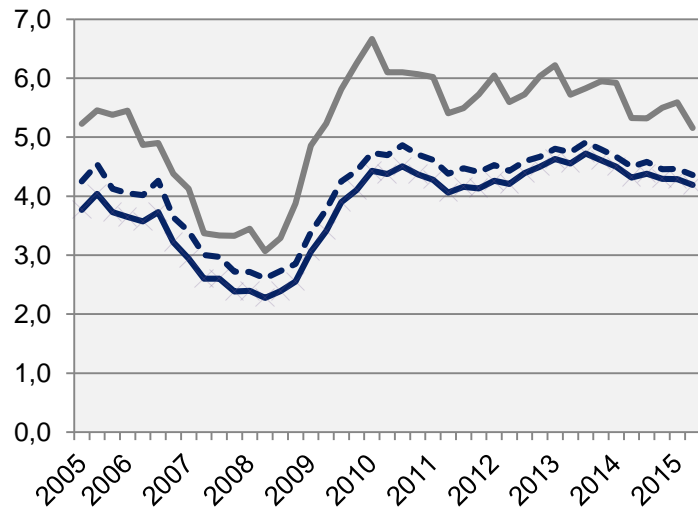
Source: The Labor Exchange

	2015 Q2		Yearly change*	
	Number	Ch., %	Number	Ch., %
Sweden	8 973	-28,7	47 131	-8,8
Stockholm Region	3 461	-35,8	19 339	-3,9
Stockholm county	2 441	-29,5	12 671	0,0
City of Stockholm	1 211	-36,9	6 857	-0,8
Sweden, excl. Stockholm county	6 532	-28,4	34 460	-11,6

 Stockholm county

*Last four quarters

Unemployment in relation to the population (%), 15-74 years



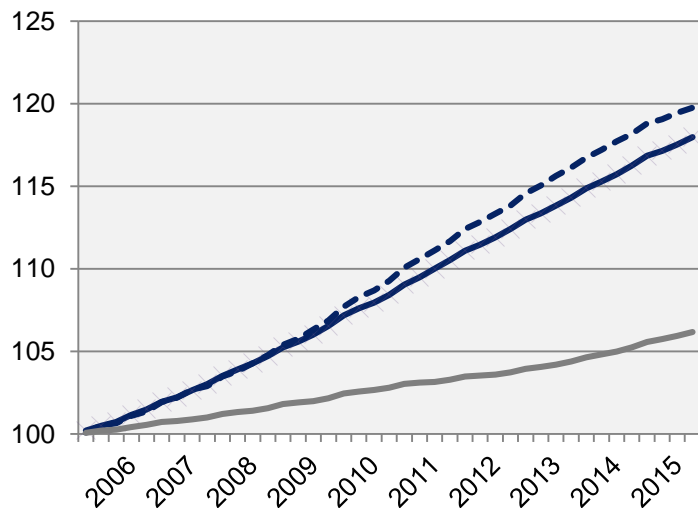
	Number	Yearly change*	<i>Unemployed out of population, 15-74 years</i>		
	2015 Q2		2010 Q1	2014 Q2	2015 Q2
Sweden	358 658	-8 764	4,9	6,2	5,1
Stockholm Region	129 409	-1 767	4,6	5,5	4,8
Stockholm county	69 544	-1 232	3,8	4,4	4,3
City of Stockholm	30 729	-593	4,3	4,7	4,5
Sweden, excl. Stockholm county	289 114	-7 532	5,2	6,7	5,3

 Stockholm county

*Last four quarters

Population

Index 100 = 2005 Q1



Source: Statistics Sweden

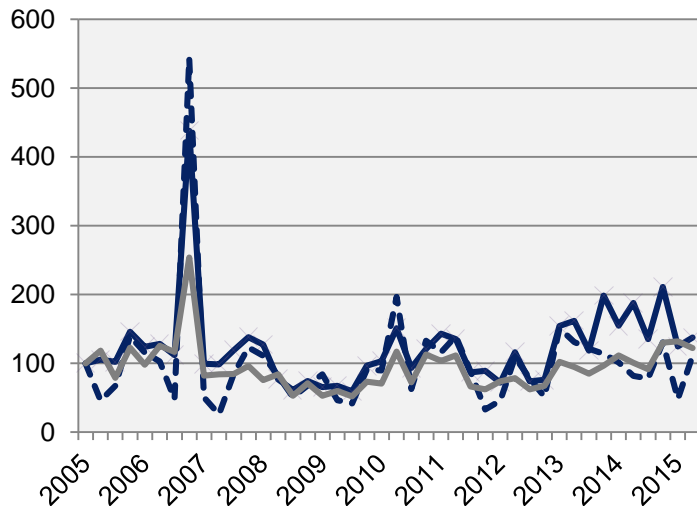
	2015 Q2	Yearly ch. *	Growth (%) since,		
	(in thousands)		2005 Q1	2010 Q1	2014 Q2
Sweden	9 793,2	99,0	8,6	4,7	1,0
Stockholm Region	3 680,2	46,0	13,2	7,1	1,3
Stockholm county	2 213,5	32,2	18,0	9,3	1,5
City of Stockholm	917,3	12,1	19,8	10,2	1,3
Sweden, excl. Stockholm county	7 579,6	66,8	6,2	3,4	0,9

 Stockholm county

*Development last four quarters

Number of housing projects started

Index 100 = 2005 Q1



Source: Statistics Sweden

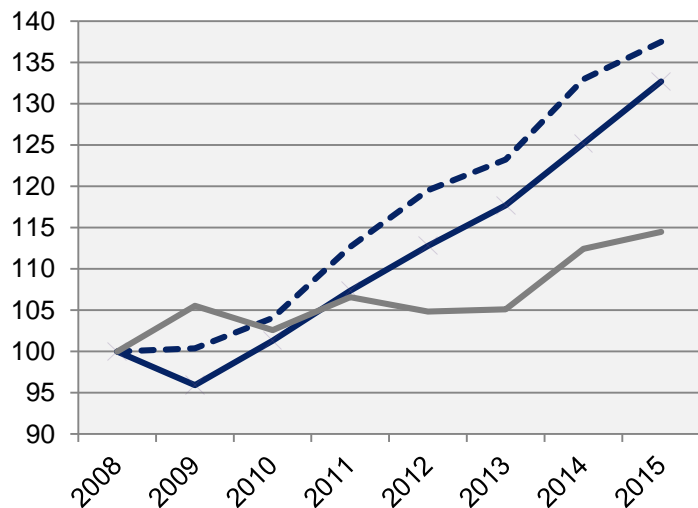
	2015 Q2		Yearly change*	
	Number	Ch., %	Number	Ch., %
Sweden	11 444	5,2	45 999	11,9
Stockholm Region	4 252	-9,8	18 563	7,3
Stockholm county	2 652	-26,7	11 719	-7,8
City of Stockholm	1 158	36,1	3 840	-11,9
Sweden, excl. Stockholm county	8 792	21,1	34 280	20,8

— Stockholm county

*Last four quarters

Commercial Accommodations

Index 100 = 2008 Q2 (Q2, 2008 - 2015)



	2015 Q2 (in thousands)	Yearly ch.*	Growth (%) since,		
			2008 Q1	2010 Q1	2014 Q2
Sweden	14 199	57 563	45,0	46,4	2,8
Stockholm Region	4 609	17 251	88,3	84,6	4,5
Stockholm county	3 300	12 244	91,4	84,9	6,0
City of Stockholm	2 176	8 132	89,1	76,1	3,4
Sweden, excl. Stockholm county	10 899	45 320	35,1	37,7	1,8

— Stockholm county
- - - City of Stockholm

*Development last four quarters

Stockholm Business Region

Stockholm Business Region is responsible for developing and promoting Stockholm as a business and tourist destination under the brand Stockholm - The Capital of Scandinavia.

The aim is to make Stockholm the leading sustainable growth region in Europe.

Stockholm Business Region is owned by the city of Stockholm and has two subsidiaries Stockholm Business Region Development and Stockholm Visitors Board.

For questions: Contact Vanessa Gisbert , Stockholm Business Region.
Publisher: Olle Zetterberg, CEO Stockholm Business Region

Stockholm Business Region

P.O. Box 16282

SE-103 25 Stockholm, Sweden

Phone + 46 8 508 280 00

www.visitstockholm.com

investstockholm.com

stockholmbusinessregion.se

