

Stockholm Economy Q3 2015

December 2015



Photo: Henrik Trygg

Stockholm Economy

Q3 2015

About the report

The report is published each quarter by Stockholm Business Region. The report includes Stockholm County and the City of Stockholm.

Statistics used is collected from Statistics Sweden, The Labour Exchange and The Swedish Companies Registration Office.

The report can be downloaded from:

<http://www.stockholmbusinessregion.se/en/facts--figures/#facts-about-business>

The Stockholm Region is defined as Stockholm County, Uppsala County, Gävleborg County, Västmanland County, Örebro County and Södermanland County. Individual county reports for the above mentioned can be found in Swedish here:

<http://www.stockholmbusinessalliance.se/konjunkturrapporter/>

Questions can be addressed to Vanessa Gisbert at Stockholm Business Region Development. Publisher: Olle Zetterberg.

Strong economic figures for Stockholm

Stockholm's economic growth continued during the third quarter of 2015. Aggregated gross pay data show positive growth figures both for Stockholm County as well as the City of Stockholm compared to the same quarter 2014.

5 103 new companies were registered in Stockholm County during the third quarter 2015, whereof the City of Stockholm accounted for 3 004. This represents a 6 % increase for the county and 7 % increase for the city compared to the third quarter 2014.

The number of people employed has increased during the last quarter. The number of listed positions increased and the number of people given notice decreased. The unemployment rate decreased both in Stockholm County and the City of Stockholm compared with the same quarter 2014.

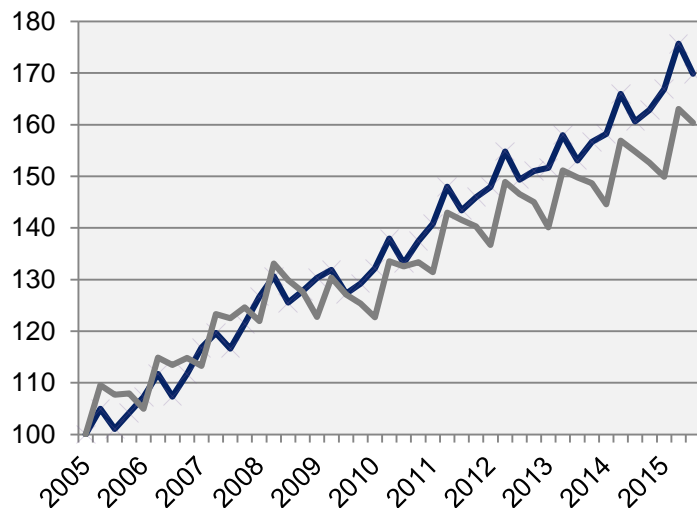
The last four quarters the number of residents has increased by 31 700 in Stockholm County, of which the City of Stockholm accounted for 11 500, representing a 1% increase in population for both regions.

The number of housing projects increased in both the county and the City of Stockholm in relation to the same quarter last year. In total 13 400 apartments were started in Stockholm County during the last four quarters, whereof about 4 800 in the City of Stockholm.

Olle Zetterberg
CEO Stockholm Business Region

Economic growth, private sector

Index 100 = 2005 Q1



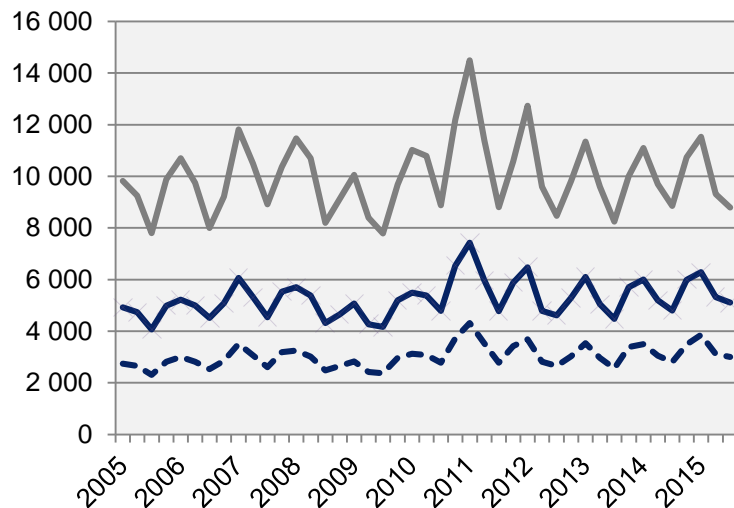
	2015 Q3	Change (%) since,		
	Billion cr.	2005 Q1	2010 Q1	2014 Q3
Sweden	288,6	63,4	30,0	4,3
Stockholm Region	128,2	67,8	29,2	5,1
Stockholm county	93,8	69,8	28,5	5,7
City of Stockholm	60,8	i.u.	29,0	5,3
Sweden, excl. Stockholm county	194,8	60,4	30,7	3,6

— Stockholm county

Economic growth, 2015 Q3

	Stockholm county				City of Stockholm			
	Billion cr.	Growth (%) since,			Billion cr.	Growth (%) since,		
		2009 Q1	2010 Q1	2014 Q3		2009 Q1	2010 Q1	2014 Q3
Total	115,1	29,9	28,2	5,3	71,0	29,7	27,7	4,9
Agriculture, forestry & fishing	0,2	55,7	37,5	4,8	0,0	121,0	45,0	3,4
Manufacturing, mining, quarrying & utilities	8,5	4,3	8,3	2,5	4,1	9,3	9,6	3,4
Energy & Environment	1,1	33,5	31,8	-0,2	0,4	-17,7	-7,6	6,6
Construction	6,9	56,9	52,1	10,6	3,3	71,2	86,2	10,4
Trade	15,4	29,8	24,2	4,6	8,8	35,1	27,2	4,8
Transport	5,4	23,1	19,0	0,3	2,4	23,9	17,2	-0,2
Accommodation & food services	3,5	87,5	74,3	8,9	2,5	83,2	72,2	8,4
Information & communication	11,1	18,8	22,8	4,9	9,2	24,4	29,1	5,7
Financial & insurance	7,7	-3,6	-1,7	6,0	5,8	-11,1	-9,2	-3,4
Real Estate	1,9	41,1	36,3	9,7	1,4	40,0	37,0	10,9
Business services	17,7	40,5	40,1	7,1	14,0	40,5	40,4	8,2
Public administration	0,1	45,8	32,0	-8,5	0,1	37,7	29,4	-4,4
Education	2,6	52,8	45,1	7,5	1,5	54,3	47,6	9,2
Health	7,5	74,5	56,3	7,3	4,3	70,1	49,7	6,0
Personal & cultural services	3,9	43,7	37,4	5,3	2,9	40,6	33,8	4,1
Unspecified	0,2	-13,7	2,6	20,3	0,0	30,6	3,9	51,4
Private sector	93,8	30,3	28,5	5,7	60,8	30,5	29,0	5,3
State	8,2	31,6	28,3	1,9	5,7	26,2	21,5	1,3
Municipal	9,8	26,2	24,4	5,1	3,7	22,7	20,0	6,2
County council	3,3	24,8	31,5	2,8	0,8	28,6	17,0	-1,0
Public sector	21,3	28,0	27,0	3,5	10,2	25,1	20,6	2,8

The number of newly registered businesses

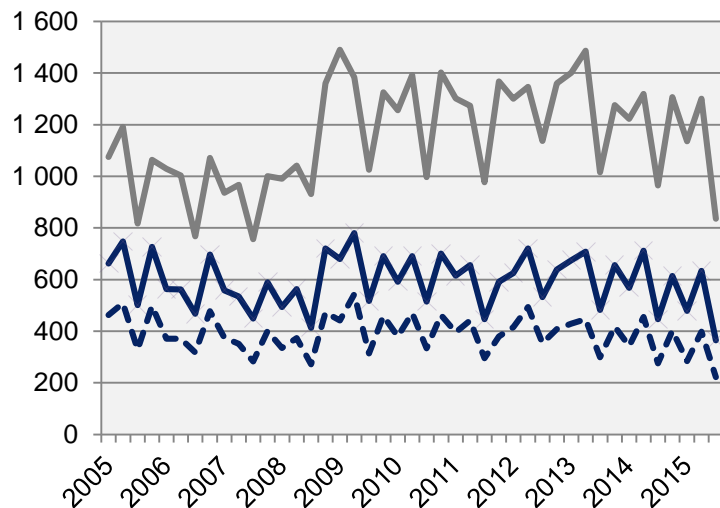


	2015 Q3		Yearly change*	
	Number	Ch., %	Number	Ch., %
Sweden	13 898	1,8	63 075	2,8
Stockholm Region	6 719	5,5	30 100	4,6
Stockholm county	5 103	6,3	22 699	4,6
City of Stockholm	3 004	7,2	13 454	5,6
Sweden, excl. Stockholm county	8 795	-0,7	40 376	1,8

*Last four quarters

 Stockholm county

Company bankruptcies



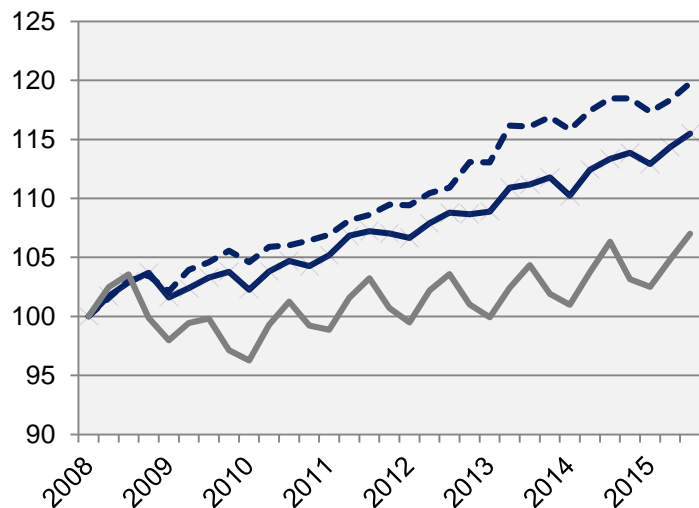
	2015 Q3		Yearly change*	
	Number	Ch., %	Number	Ch., %
Sweden	1 201	-14,9	6 671	-6,9
Stockholm Region	503	-17,7	2 947	-9,2
Stockholm county	365	-18,2	2 091	-12,2
City of Stockholm	222	-19,3	1 306	-12,3
Sweden, excl. Stockholm county	836	-13,4	4 580	-4,2

*Last four quarters

 Stockholm county

Employment rate

Index 100 = 2008 Q1



	Number	<i>Growth</i>	<i>Growth (%) since,</i>		
	2015 Q3	Yearly ch.*	2008 Q1	2010 Q1	2014 Q3
Sweden	4 924 300	45 700	8,9	11,6	0,9
Stockholm Region	1 884 700	18 600	11,9	11,6	1,0
Stockholm county	1 182 800	22 000	15,5	12,9	1,9
City of Stockholm	521 400	5 700	19,8	14,5	1,1
Sweden, excl. Stockholm county	3 741 500	23 700	7,0	11,2	0,6

— Stockholm county

- - - City of Stockholm

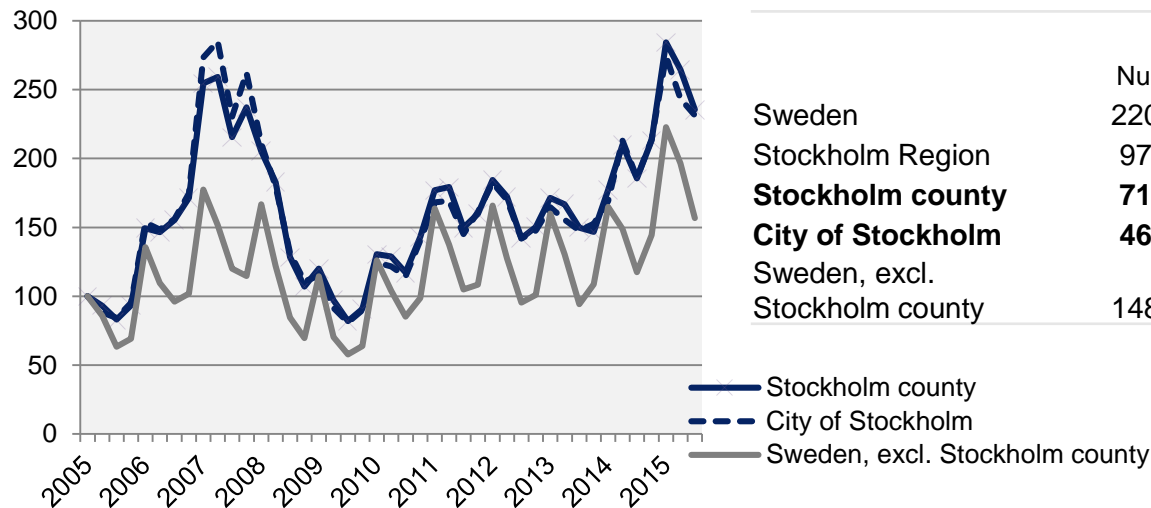
*Last four quarters

The number of employed people in Stockholm County

	Number	<i>Growth</i>	<i>Growth (%) since,</i>		
	2015 Q3	Yearly ch.*	2008 Q1	2010 Q1	2014 Q3
Total	1 182 800	22 000	15,5	12,9	1,9
Agriculture, forestry & fishing	3 700	-1 400	15,6	15,6	-27,5
Manufacturing, mining, quarrying & utilities	58 100	5 600	-0,2	-0,5	10,7
Manufacturing of workshop products	27 300	2 900	-4,5	-9,0	11,9
Construction	64 900	6 500	8,2	14,3	11,1
Trade	142 000	6 100	5,7	11,6	4,5
Transport	58 900	1 400	10,9	8,1	2,4
Accommodation & food services	48 800	3 100	36,3	31,5	6,8
Information & communication	90 200	-500	18,1	13,9	-0,6
Arts, entertainment, recreation & other services	67 300	-7 700	7,7	5,2	-10,3
Financial & insurance	296 600	6 000	23,0	15,4	2,1
Public administration	80 900	-2 100	24,7	13,1	-2,5
Education	122 800	7 400	17,0	11,3	6,4
Health	140 800	-1 800	13,5	14,7	-1,3
Unspecified	3 000	1 000			50,0
Employed in Sweden	1 178 100	23 800	15,4	12,9	2,1
Employed abroad	4 700	-1 800	38,2	27,0	-27,7

Number of recently listed positions

Index 100 = 2005 Q1

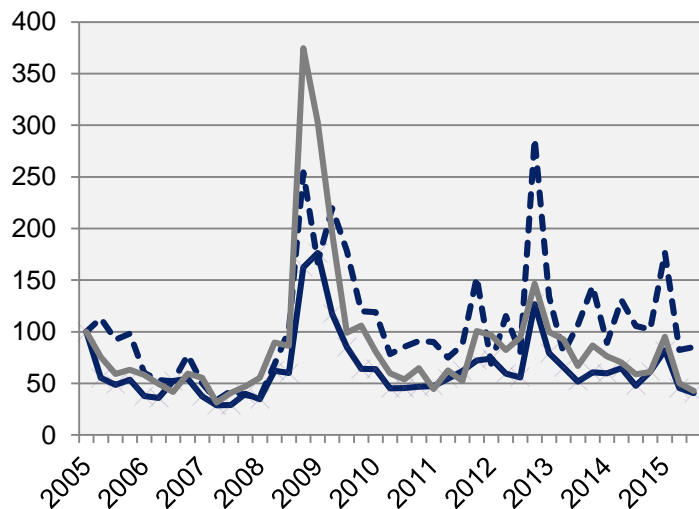


	2015 Q3		Yearly growth*	
	Number	Ch., %	Number	Ch., %
Sweden	220 376	31,3	986 803	35,0
Stockholm Region	97 258	27,0	425 591	36,4
Stockholm county	71 442	26,9	302 676	38,7
City of Stockholm	46 830	24,3	194 882	33,6
Sweden, excl. Stockholm county	148 934	33,5	684 127	33,5

*Last four quarters

The number of people given notice

Index 100 = 2005 Q1



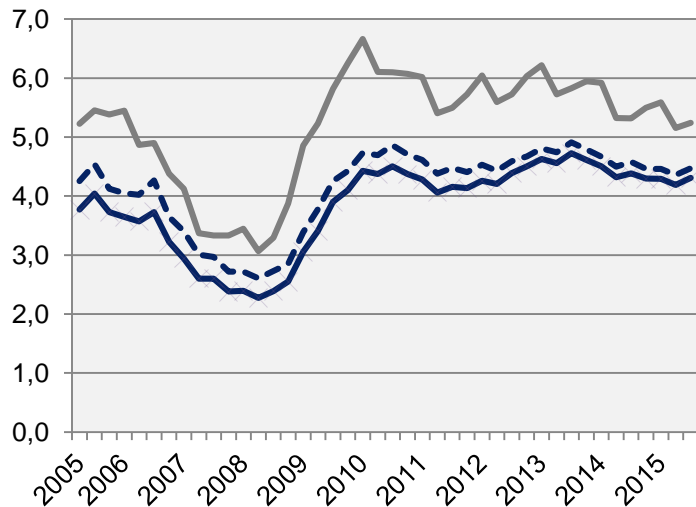
Source: The Labor Exchange

	2015 Q3		Yearly change*	
	Number	Ch., %	Number	Ch., %
Sweden	7 717	-24,3	44 660	-11,4
Stockholm Region	3 112	-21,1	18 508	-5,3
Stockholm county	2 164	-15,3	12 280	-1,4
City of Stockholm	1 251	-19,3	6 558	-4,9
Sweden, excl. Stockholm county	5 553	-27,3	32 380	-14,6

 Stockholm county

*Last four quarters

Unemployment in relation to the population (%), 15-74 years



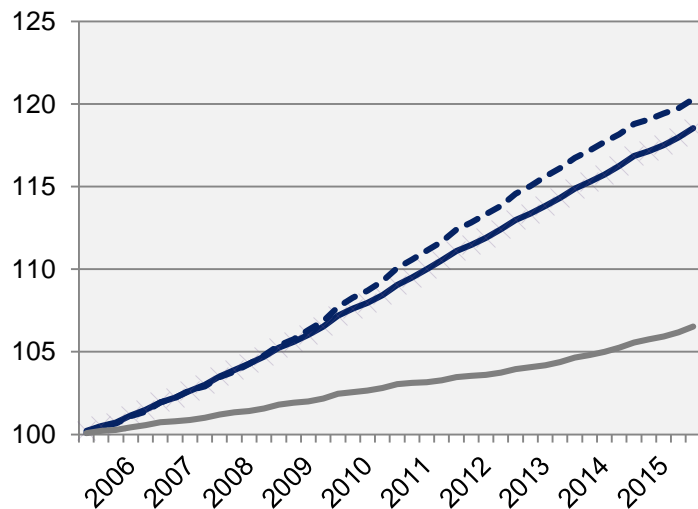
	Number	Yearly change*	<i>Unemployed out of population, 15-74 years</i>		
	2015 Q3		2010 Q1	2014 Q3	2015 Q3
Sweden	365 979	-3 026	6,2	5,1	5,0
Stockholm Region	133 094	681	5,5	4,9	4,8
Stockholm county	71 754	-310	4,4	4,4	4,3
City of Stockholm	31 619	-402	4,7	4,6	4,5
Sweden, excl. Stockholm county	294 225	-2 716	6,7	5,3	5,2

 Stockholm county

*Last four quarters

Population

Index 100 = 2005 Q1



Source: Statistics Sweden

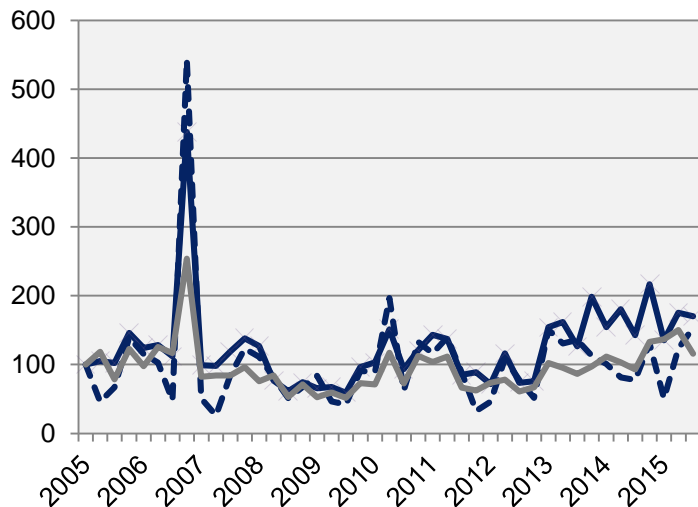
	2015 Q3 (in thousands)	Yearly ch. *	Growth (%) since,		
			2005 Q1	2010 Q1	2014 Q3
Sweden	9 828,7	100,2	9,0	5,1	1,0
Stockholm Region	3 696,4	46,8	13,7	7,6	1,3
Stockholm county	2 224,2	31,7	18,5	9,8	1,4
City of Stockholm	921,5	11,5	20,3	10,7	1,3
Sweden, excl. Stockholm county	7 604,5	68,4	6,5	3,8	0,9

 Stockholm county

*Development last four quarters

Number of housing projects started

Index 100 = 2005 Q1



Source: Statistics Sweden

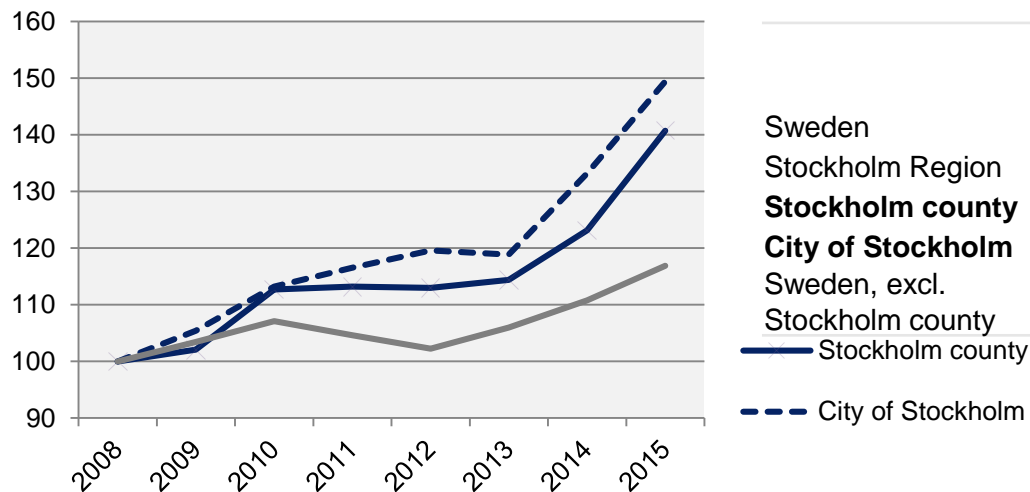
	2015 Q3		Yearly change*	
	Number	Ch., %	Number	Ch., %
Sweden	11 628	23,0	52 075	23,3
Stockholm Region	4 133	11,0	20 926	18,7
Stockholm county	3 279	19,0	13 454	3,2
City of Stockholm	1 600	96,8	4 777	22,5
Sweden, excl. Stockholm county	8 349	24,7	38 621	32,3

 Stockholm county

*Last four quarters

Commercial Accommodations

Index 100 = 2008 Q3 (Q3, 2008 - 2015)



	2015 Q3 (in thousands)	Yearly ch.*	Growth (%) since,		
			2008 Q3	2010 Q3	2014 Q3
Sweden	24 929	59 188	20,5	11,6	7,0
Stockholm Region	6 491	17 859	29,2	17,7	10,3
Stockholm county	4 415	12 796	40,7	24,9	14,3
City of Stockholm	2 856	8 442	49,4	32,0	12,2
Sweden, excl. Stockholm county	20 515	46 392	16,9	9,1	5,5

*Development last four quarters

Stockholm Business Region

Stockholm Business Region is responsible for developing and promoting Stockholm as a business and tourist destination under the brand Stockholm - The Capital of Scandinavia.

The aim is to make Stockholm the leading sustainable growth region in Europe.

Stockholm Business Region is owned by the city of Stockholm and has two subsidiaries Stockholm Business Region Development and Stockholm Visitors Board.

For questions: Contact Vanessa Gisbert, Stockholm Business Region.
Publisher: Olle Zetterberg, CEO Stockholm Business Region

Stockholm Business Region

P.O. Box 16282

SE-103 25 Stockholm, Sweden

Phone + 46 8 508 280 00

www.visitstockholm.com

investstockholm.com

stockholmbusinessregion.se

