

Stockholm Economy Q1 2016

Economy Q1 2016

June 2016



Stockholm Economy

Q1 2016

About the report

The report is published each quarter by Stockholm Business Region. The report includes Stockholm County and the City of Stockholm.

Statistics used is collected from Statistics Sweden, The Labour Exchange and The Swedish Companies Registration Office.

The report can be downloaded from:

<http://www.stockholmbusinessregion.se/en/facts--figures/#facts-about-business>

The Stockholm Region is defined as Stockholm County, Uppsala County, Södermanland County, Östergötland County, Örebro County, Västmanland County, Gävleborg County and Dalarna County. Individual county reports for the above mentioned can be found in Swedish here: <http://www.stockholmbusinessalliance.se/konjunkturrapporter/>

Questions can be addressed to Stefan Frid at Invest Stockholm.
Publisher: Olle Zetterberg.

Strong economic figures for Stockholm

During the first quarter 2016 Stockholm's economic growth continued. Aggregated gross pay data show positive growth figures both for Stockholm County and the City of Stockholm compared to the same quarter 2015.

In total 6 740 new companies were registered in Stockholm County during the first quarter of 2016, whereof the City of Stockholm accounted for 3 939. This represents a 7 % increase for the county and 2 % increase for the city compared to the first quarter 2015.

The number of people employed has increased during the last quarter. Also the number of listed positions increased with the largest absolute increase among companies within the financial and insurance sector. The number of people given notice decreased. The unemployment rate continued to decrease both in Stockholm County and the City of Stockholm compared with the same quarter 2015.

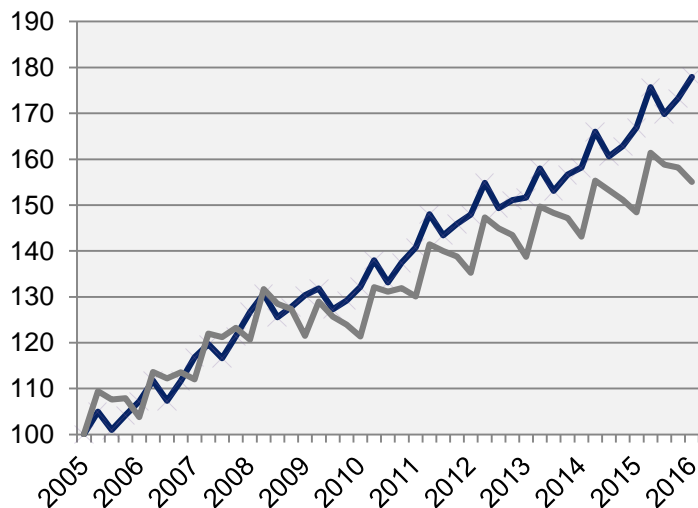
The last four quarters the number of residents has increased by 34 100 in Stockholm County, of which the City of Stockholm accounted for 11 000, representing a 2 % increase for the county and 1 % for the city.

The number of housing projects increased substantially in both the county and the City of Stockholm in relation to the same quarter last year. In total 14 400 apartments were started in Stockholm County during the last four quarters, whereof about 5 900 in the City of Stockholm.

Olle Zetterberg
CEO Stockholm Business Region

Economic growth, private sector

Index 100 = 2005 Q1



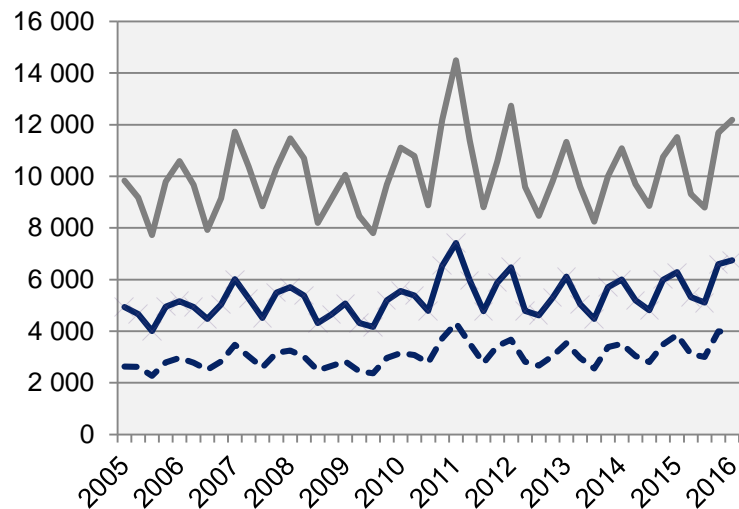
	2016 Q1	Change (%) since,		
	Billion cr.	2005 Q1	2010 Q1	2015 Q1
Sweden	288,5	62,2	30,0	5,2
Stockholm Region	149,6	69,6	32,0	5,7
Stockholm county	98,3	77,9	34,6	6,6
City of Stockholm	65,0	n.d.	37,9	7,0
Sweden, excl. Stockholm county	190,2	55,1	27,7	4,5

 Stockholm county

Economic growth, 2016 Q1

	Stockholm county				City of Stockholm			
	Billion cr.	Growth (%) since,			Billion cr.	Growth (%) since,		
		2009 Q1	2010 Q1	2015 Q1		2009 Q1	2010 Q1	2015 Q1
Total	119,5	34,8	33,1	6,3	75,2	37,3	35,3	6,8
Agriculture, forestry & fishing	0,1	42,4	25,7	5,3	0,0	88,9	24,0	6,0
Manufacturing, mining, quarrying & utilities	9,5	16,0	20,4	8,7	4,6	23,3	23,6	11,9
Energy & Environment	1,1	40,8	39,1	9,4	0,5	-10,0	1,1	12,1
Construction	6,7	51,8	47,1	10,7	3,3	69,5	84,4	13,2
Trade	15,7	32,0	26,3	6,1	9,0	38,5	30,4	6,7
Transport	5,2	18,8	14,8	3,4	2,4	19,5	13,0	1,6
Accommodation & food services	3,3	77,5	65,0	11,6	2,4	77,2	66,5	10,6
Information & communication	12,0	28,7	33,1	6,0	10,0	35,8	40,9	6,9
Financial & insurance	9,9	22,9	25,3	4,6	7,7	17,5	20,0	3,6
Real Estate	2,0	49,6	44,5	8,8	1,5	52,5	49,3	10,8
Business services	18,3	44,9	44,5	5,3	14,6	46,6	46,5	5,9
Public administration	0,1	28,4	16,2	-4,3	0,1	19,3	12,1	-6,1
Education	2,7	56,2	48,4	5,4	1,6	58,8	51,9	6,6
Health	7,6	77,3	58,9	8,8	4,4	74,9	53,9	9,9
Personal & cultural services	3,8	39,4	33,3	5,0	2,9	38,4	31,7	4,9
Unspecified	0,2	-6,4	11,2	13,2	0,1	98,9	58,2	58,5
Private sector	98,3	36,5	34,6	6,6	65,0	39,4	37,9	7,0
State	8,3	32,3	29,0	3,9	5,7	26,9	22,2	4,1
Municipal	9,8	26,4	24,6	6,8	3,7	22,9	20,2	8,6
County council	3,2	20,5	27,0	1,0	0,8	27,4	15,8	1,1
Public sector	21,2	27,6	26,6	4,8	10,2	25,5	20,9	5,4

The number of newly registered businesses

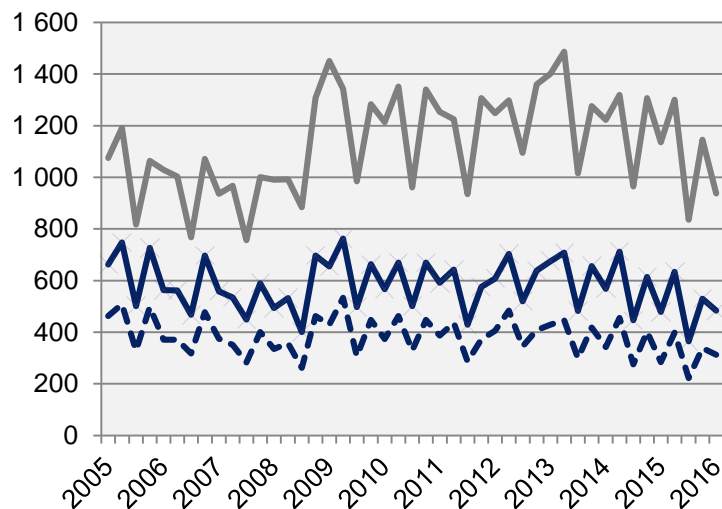


	2016 Q1		Yearly change*	
	Number	Ch., %	Number	Ch., %
Sweden	18 929	6,3	65 744	4,2
Stockholm Region	10 029	7,5	34 996	5,7
Stockholm county	6 740	7,2	23 757	6,7
City of Stockholm	3 939	2,1	14 053	6,5
Sweden, excl. Stockholm county	12 189	5,8	41 987	2,9

*Last four quarters

— Stockholm county

Company bankruptcies



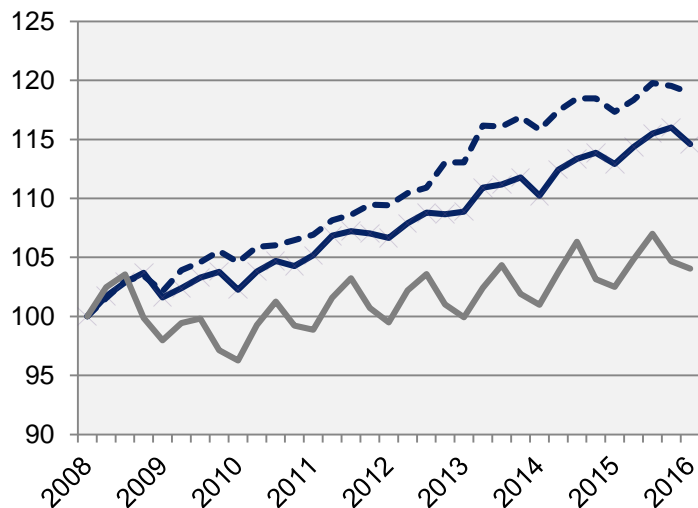
	2016 Q1		Yearly change*	
	Number	Ch., %	Number	Ch., %
Sweden	1 420	-12,1	6 231	-10,7
Stockholm Region	717	-10,8	3 080	-13,4
Stockholm county	483	0,8	2 011	-10,7
City of Stockholm	312	9,9	1 271	-10,2
Sweden, excl. Stockholm county	937	-17,5	4 220	-10,7

*Last four quarters

 Stockholm county

Employment rate

Index 100 = 2008 Q1



	Number	<i>Growth</i>	<i>Growth (%) since,</i>		
	2016 Q1	Yearly ch.*	2008 Q1	2010 Q1	2015 Q1
Sweden	4 811 400	71 500	6,4	9,0	1,5
Stockholm Region	2 204 700	32 700	9,3	10,0	1,5
Stockholm county	1 173 500	17 100	14,6	12,1	1,5
City of Stockholm	517 800	7 000	19,0	13,7	1,4
Sweden, excl. Stockholm county	3 637 900	54 400	4,1	8,1	1,5

— Stockholm county

- - - City of Stockholm

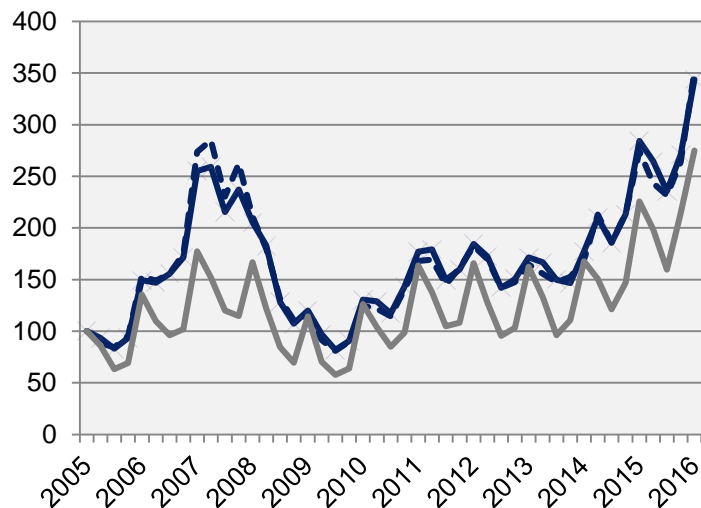
*Last four quarters

The number of employed people in Stockholm County

	Number	<i>Growth</i>	<i>Growth (%) since,</i>		
	2016 Q1	Yearly ch.*	2008 Q1	2010 Q1	2015 Q1
Total	1 173 500	17 100	14,6	12,1	1,5
Agriculture, forestry & fishing	3 300	-2 100	3,1	3,1	-38,9
Manufacturing, mining, quarrying & utilities	59 700	3 300	2,6	2,2	5,9
Manufacturing of workshop products	29 900	4 700	4,5	-0,3	18,7
Construction	68 400	8 000	14,0	20,4	13,2
Trade	141 000	-2 000	4,9	10,8	-1,4
Transport	52 400	-1 500	-1,3	-3,9	-2,8
Accommodation & food services	48 100	8 500	34,4	29,6	21,5
Information & communication	91 500	-400	19,8	15,5	-0,4
Arts, entertainment, recreation & other services	71 000	1 300	13,6	10,9	1,9
Financial & insurance	285 500	-700	18,4	11,1	-0,2
Public administration	78 100	-3 600	20,3	9,2	-4,4
Education	127 200	3 400	21,1	15,3	2,7
Health	138 500	2 100	11,6	12,8	1,5
Unspecified	3 200	3 200	n.d.	n.d.	n.d.
Employed in Sweden	1 167 900	17 100	14,4	11,9	1,5
Employed abroad	5 600	0	64,7	51,4	0,0

Number of recently listed positions

Index 100 = 2005 Q1



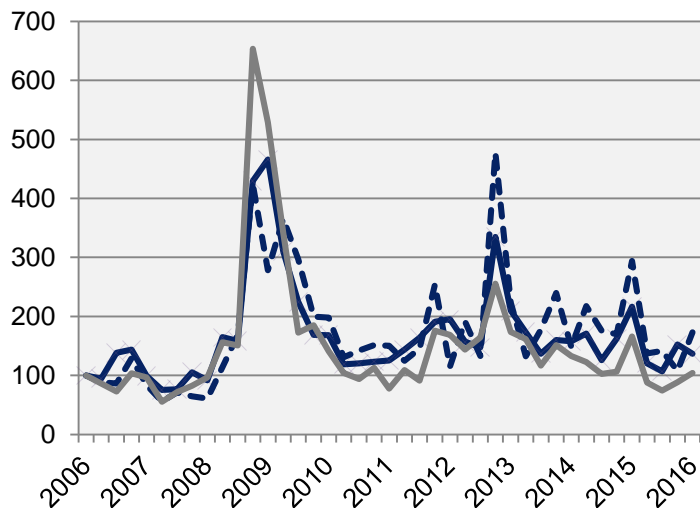
	2016 Q1		Yearly growth*	
	Number	Ch., %	Number	Ch., %
Sweden	365 525	21,7	1 143 039	29,4
Stockholm Region	174 772	19,5	553 500	25,0
Stockholm county	104 294	20,9	338 230	24,8
City of Stockholm	71 074	28,0	220 498	22,8
Sweden, excl. Stockholm county	261 231	22,0	804 809	31,5

 Stockholm county

*Last four quarters

The number of people given notice

Index 100 = 2006 Q1



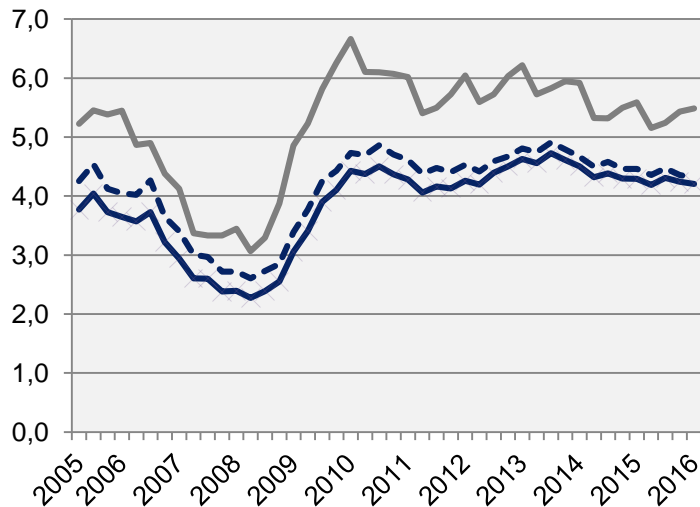
Source: The Labor Exchange

	2016 Q1		Yearly change*	
	Number	Ch., %	Number	Ch., %
Sweden	10 532	-37,2	36 914	-27,3
Stockholm Region	5 196	-42,4	17 840	-29,8
Stockholm county	2 769	-36,9	10 467	-23,6
City of Stockholm	1 529	-41,1	4 942	-34,7
Sweden, excl. Stockholm county	7 763	-37,3	26 447	-28,6

 Stockholm county

*Last four quarters

Unemployment in relation to the population (%), 15-74 years



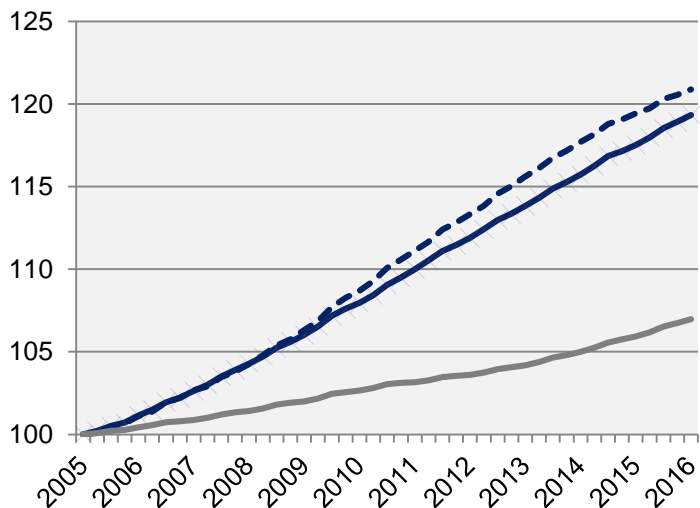
	<i>Number</i>	<i>Yearly change*</i>	<i>Unemployed out of population, 15-74 years</i>		
	2016 Q1		2010 Q1	2015 Q1	2016 Q1
Sweden	379 958	-4 328	6,2	5,3	5,2
Stockholm Region	164 688	227	5,7	5,0	5,0
Stockholm county	70 611	-485	4,4	4,3	4,2
City of Stockholm	30 671	-749	4,7	4,5	4,3
Sweden, excl. Stockholm county	309 348	-3 843	6,7	5,6	5,5

 Stockholm county

*Last four quarters

Population

Index 100 = 2005 Q1



Source: Statistics Sweden

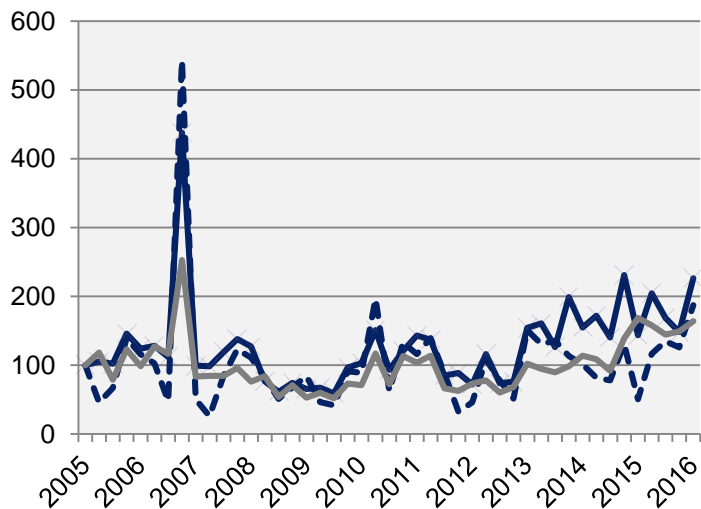
	2016 Q1 (in thousands)	Yearly ch. * (in thousands)	Growth (%) since,		
			2005 Q1	2010 Q1	2015 Q1
Sweden	9 875,4	108,0	9,5	5,6	1,1
Stockholm Region	4 445,9	56,4	12,8	7,4	1,3
Stockholm county	2 239,2	34,1	19,3	10,5	1,5
City of Stockholm	925,9	11,0	20,9	11,2	1,2
Sweden, excl. Stockholm county	7 636,2	73,9	7,0	4,2	1,0

 Stockholm county

*Development last four quarters

Number of housing projects started

Index 100 = 2005 Q1



Source: Statistics Sweden

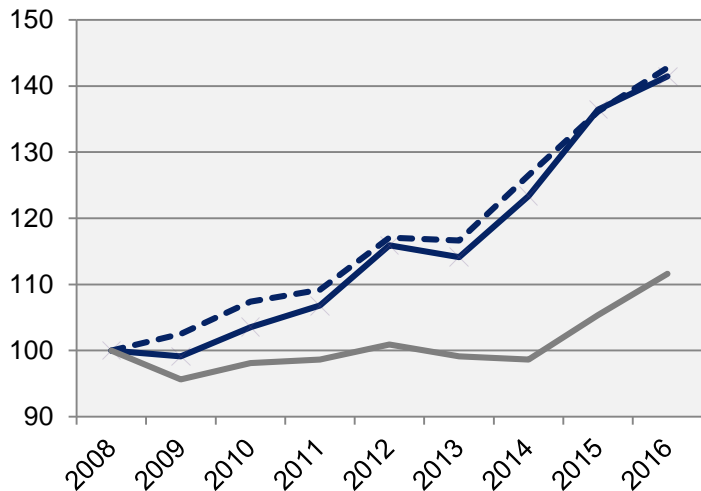
	2016 Q1		Yearly change*	
	Number	Ch., %	Number	Ch., %
Sweden	16 242	8,4	59 029	17,9
Stockholm Region	7 195	5,6	25 680	13,2
Stockholm county	4 364	57,8	14 419	8,9
City of Stockholm	1 955	271,0	5 889	65,6
Sweden, excl. Stockholm county	11 878	-2,7	44 610	21,1

 Stockholm county

*Last four quarters

Commercial Accommodations

Index 100 = 2008 Q1 (Q1, 2008 - 2016)



	2016 Q1 (in thousands)	Yearly ch. * (in thousands)	Growth (%) since,		
			2008 Q1	2010 Q1	2015 Q1
Sweden	11 445	60 717	16,9	18,0	6,4
Stockholm Region	5 580	25 013	10,8	10,3	2,6
Stockholm county	2 439	13 062	41,5	36,7	3,7
City of Stockholm	1 643	8 667	42,8	33,0	4,9
Sweden, excl. Stockholm county	9 007	47 404	11,6	13,8	5,9

— Stockholm county
- - - City of Stockholm

*Development last four quarters

Stockholm Business Region

Stockholm Business Region is responsible for developing and promoting Stockholm as a business and tourist destination under the brand Stockholm - The Capital of Scandinavia.

The aim is to make Stockholm the leading sustainable growth region in Europe.

Stockholm Business Region is owned by the city of Stockholm and has two subsidiaries Stockholm Business Region Development and Stockholm Visitors Board.

For questions: Contact Stefan Frid, Invest Stockholm.
Publisher: Olle Zetterberg, CEO Stockholm Business Region

Stockholm Business Region

P.O. Box 16282

SE-103 25 Stockholm, Sweden

Phone + 46 8 508 280 00

www.visitstockholm.com

investstockholm.com

stockholmbusinessregion.se

