

Stockholm Economy Q2 2016

Economy Q2 2016

September 2016



Stockholm Economy

Q2 2016

About the report

The report is published each quarter by Stockholm Business Region. The report includes Stockholm County and the City of Stockholm.

Statistics used is collected from Statistics Sweden, The Labour Exchange and The Swedish Companies Registration Office.

The report can be downloaded from:

<http://www.stockholmbusinessregion.se/en/facts-figures/#facts-about-business>

The Stockholm Region is defined as Stockholm County, Uppsala County, Södermanland County, Östergötland County, Örebro County, Västmanland County, Gävleborg County and Dalarna County. Individual county reports for the above mentioned can be found in Swedish here: <http://www.stockholmbusinessalliance.se/konjunkturrapporter/>

Questions can be addressed to Stefan Frid at Invest Stockholm.
Publisher: Olle Zetterberg.

Positive figures for Stockholm

During the second quarter 2016 Stockholm's economic growth continued. Aggregated gross pay data show positive growth figures both for Stockholm County and the City of Stockholm compared to the same quarter 2015.

In total 6 378 new companies were registered in Stockholm County during the second quarter of 2016, whereof the City of Stockholm accounted for 3 761. This represents a 20 % increase for the county and 21 % increase for the city compared to the second quarter 2015.

During the last quarter the number of people employed increased as did the number of listed positions. The largest increase of listed positions were in the construction and health care sectors. The number of people given notice decreased. The unemployment rate continued to decrease both in Stockholm County and the City of Stockholm compared with the same quarter 2015.

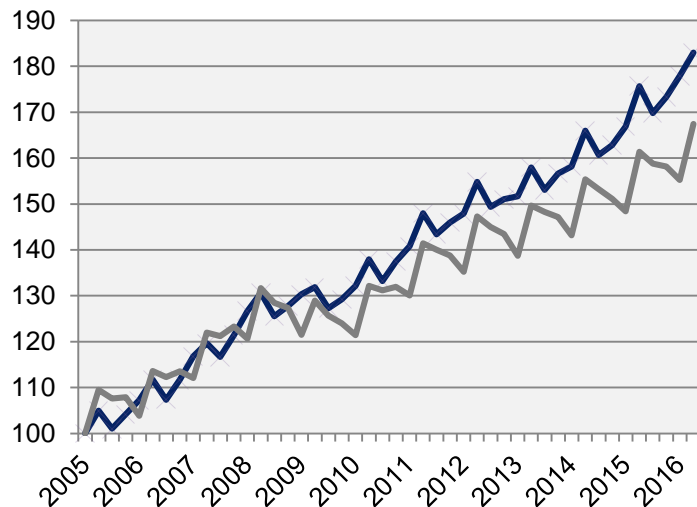
The last four quarters the number of residents has increased by 35 000 in Stockholm County, of which the City of Stockholm accounted for 10 800, representing a 2 % increase for the county and 1 % for the city.

The number of housing projects increased in both the county and the City of Stockholm in relation to the same quarter last year. In total 15 800 apartments were started in Stockholm County during the last four quarters, whereof about 6 500 in the City of Stockholm.

Olle Zetterberg
CEO Stockholm Business Region

Economic growth, private sector

Index 100 = 2005 Q1



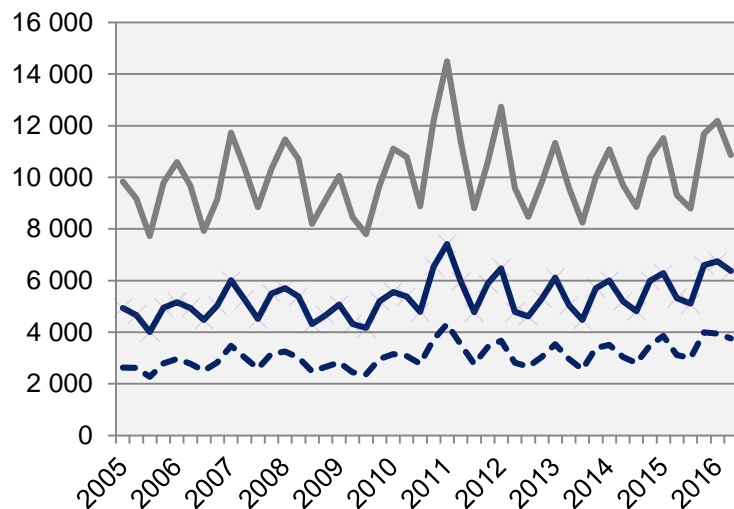
	2016 Q2	Change (%) since,		
	Billion cr.	2005 Q1	2010 Q1	2015 Q2
Sweden	306,5	72,3	38,1	3,9
Stockholm Region	156,4	77,3	38,0	3,9
Stockholm county	101,1	83,0	38,5	4,2
City of Stockholm	66,3	n.d.	40,6	4,5
Sweden, excl. Stockholm county	205,4	67,5	37,9	3,8

— Stockholm county

Economic growth, 2016 Q2

	Stockholm county				City of Stockholm			
	Billion cr.	Growth (%) since,			Billion cr.	Growth (%) since,		
		2009 Q1	2010 Q1	2015 Q2		2009 Q1	2010 Q1	2015 Q2
<i>Total</i>	123,1	38,9	37,1	4,3	76,9	40,4	38,3	4,7
Agriculture, forestry & fishing	0,2	64,7	45,4	2,6	0,0	106,8	35,7	-1,4
Manufacturing, mining, quarrying & utilities	9,3	14,5	18,8	-3,9	4,4	17,4	17,7	-9,4
Energy & Environment	1,2	45,7	43,9	7,1	0,5	-8,0	3,3	9,2
Construction	7,7	73,7	68,3	8,7	3,9	99,3	116,8	13,0
Trade	16,0	34,8	29,0	5,4	9,0	39,1	30,9	5,8
Transport	5,4	23,7	19,5	0,3	2,4	22,7	16,1	-5,7
Accommodation & food services	3,6	90,6	77,3	9,2	2,5	89,1	77,7	7,6
Information & communication	12,2	30,0	34,4	4,3	10,0	36,0	41,2	4,4
Financial & insurance	9,1	13,8	16,1	1,2	7,3	10,8	13,2	4,8
Real Estate	2,3	71,4	65,6	7,9	1,6	67,8	64,2	8,0
Business services	19,3	52,6	52,2	5,8	15,2	53,1	53,0	5,9
Public administration	0,1	39,7	26,5	-3,7	0,1	30,0	22,1	-6,3
Education	2,8	62,5	54,3	3,3	1,6	64,5	57,3	6,4
Health	7,7	79,5	60,9	6,7	4,5	78,0	56,6	8,3
Personal & cultural services	4,0	47,5	41,1	3,5	3,0	46,0	38,9	3,3
Unspecified	0,2	-2,6	15,7	8,2	0,1	96,0	55,9	50,8
Private sector	101,1	40,4	38,5	4,2	66,3	42,2	40,6	4,5
State	8,5	36,6	33,2	5,0	5,9	31,2	26,3	5,4
Municipal	10,2	32,2	30,4	6,6	3,8	28,5	25,7	8,5
County council	3,2	21,9	28,4	0,8	0,8	29,2	17,5	1,2
Public sector	22,0	32,2	31,2	5,1	10,6	30,0	25,3	6,1

The number of newly registered businesses

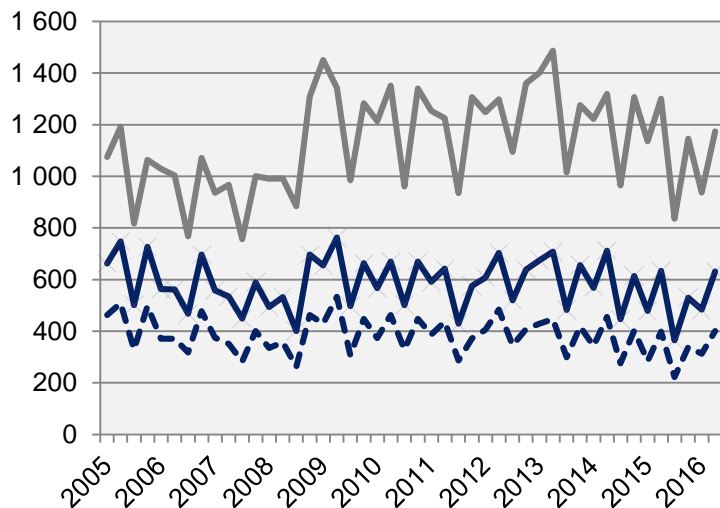


	2016 Q2		Yearly change*	
	Number	Ch., %	Number	Ch., %
Sweden	17 234	17,8	68 345	8,8
Stockholm Region	9 218	17,7	36 379	9,7
Stockholm county	6 378	19,8	24 812	10,7
City of Stockholm	3 761	20,8	14 700	10,8
Sweden, excl. Stockholm county	10 856	16,6	43 533	7,7

*Last four quarters

 Stockholm county

Company bankruptcies



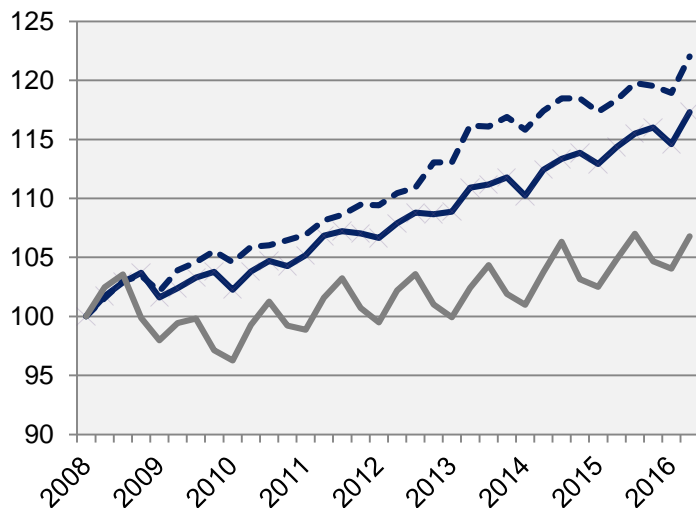
	2016 Q2		Yearly change*	
	Number	Ch., %	Number	Ch., %
Sweden	1 805	-6,7	6 102	-11,3
Stockholm Region	922	-5,0	3 031	-12,7
Stockholm county	631	-0,3	2 009	-7,5
City of Stockholm	401	0,8	1 274	-6,3
Sweden, excl. Stockholm county	1 174	-9,8	4 093	-13,1

*Last four quarters

 Stockholm county

Employment rate

Index 100 = 2008 Q1



Source: Statistics Sweden

	Number	<i>Growth</i>	<i>Growth (%) since,</i>		
	2016 Q2	Yearly ch.*	2008 Q1	2010 Q1	2015 Q2
Sweden	4 934 500	97 900	9,2	11,8	2,0
Stockholm Region	2 262 700	53 400	12,2	12,9	2,4
Stockholm county	1 201 400	30 300	17,3	14,7	2,6
City of Stockholm	531 200	16 000	22,0	16,7	3,1
Sweden, excl.					
Stockholm county	3 733 100	67 600	6,8	10,9	1,8

— Stockholm county

- - - City of Stockholm

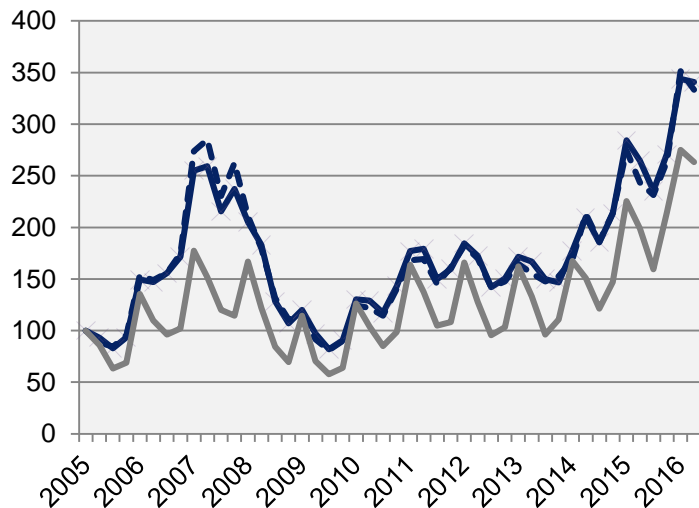
*Last four quarters

The number of employed people in Stockholm County

	Number	<i>Growth</i>	<i>Growth (%) since,</i>		
	2016 Q2	Yearly ch.*	2008 Q1	2010 Q1	2015 Q2
Total	1 201 400	30 300	17,3	14,7	2,6
Agriculture, forestry & fishing	3 800	-900	18,8	18,8	-19,1
Manufacturing, mining, quarrying & utilities	58 400	800	0,3	0,0	1,4
Manufacturing of workshop products	28 800	2 000	0,7	-4,0	7,5
Construction	69 100	6 000	15,2	21,7	9,5
Trade	142 600	4 000	6,1	12,1	2,9
Transport	55 600	-2 800	4,7	2,0	-4,8
Accommodation & food services	47 900	1 300	33,8	29,1	2,8
Information & communication	91 200	800	19,4	15,2	0,9
Arts, entertainment, recreation & other services	72 200	2 100	15,5	12,8	3,0
Financial & insurance	298 800	6 900	23,9	16,3	2,4
Public administration	82 600	700	27,3	15,5	0,9
Education	126 600	3 500	20,6	14,8	2,8
Health	146 200	8 000	17,8	19,1	5,8
Unspecified	n.d.	n.d.	n.d.	n.d.	n.d.
Employed in Sweden	1 197 500	31 200	17,3	14,7	2,7
Employed abroad	3 900	-900	14,7	5,4	-18,8

Number of recently listed positions

Index 100 = 2005 Q1



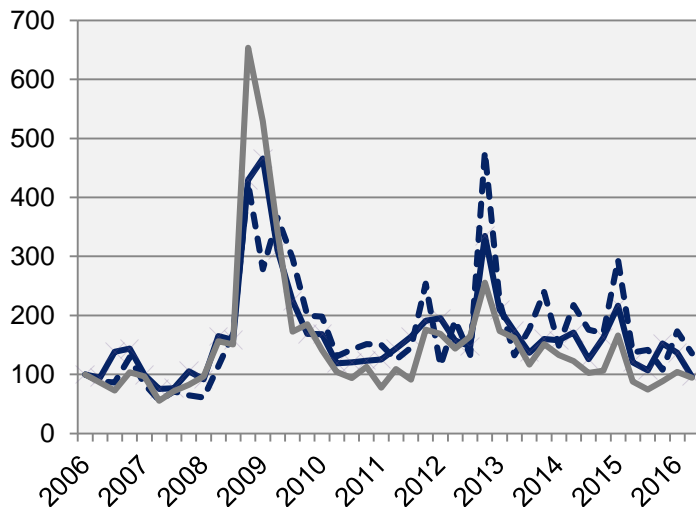
	2016 Q2		Yearly growth*	
	Number	Ch., %	Number	Ch., %
Sweden	353 305	31,4	1 227 411	29,9
Stockholm Region	167 824	29,3	591 540	26,4
Stockholm county	103 397	28,8	361 347	25,7
City of Stockholm	67 444	37,0	238 695	28,5
Sweden, excl. Stockholm county	249 908	32,5	866 064	31,7

 Stockholm county

*Last four quarters

The number of people given notice

Index 100 = 2006 Q1



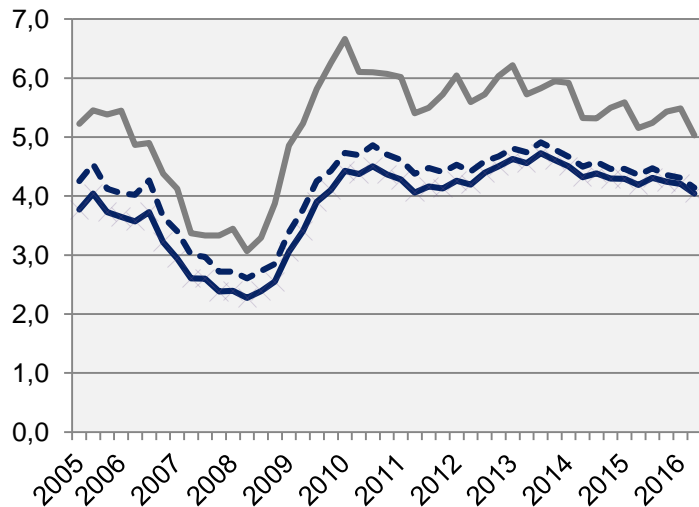
Source: The Labor Exchange

	2016 Q2		Yearly change*	
	Number	Ch., %	Number	Ch., %
Sweden	8 977	0,0	36 918	-21,7
Stockholm Region	3 756	-3,2	17 714	-22,5
Stockholm county	1 951	-20,1	9 977	-21,3
City of Stockholm	1 197	-1,2	4 928	-28,1
Sweden, excl. Stockholm county	7 026	7,6	26 941	-21,8

 Stockholm county

*Last four quarters

Unemployment in relation to the population (%), 15-74 years



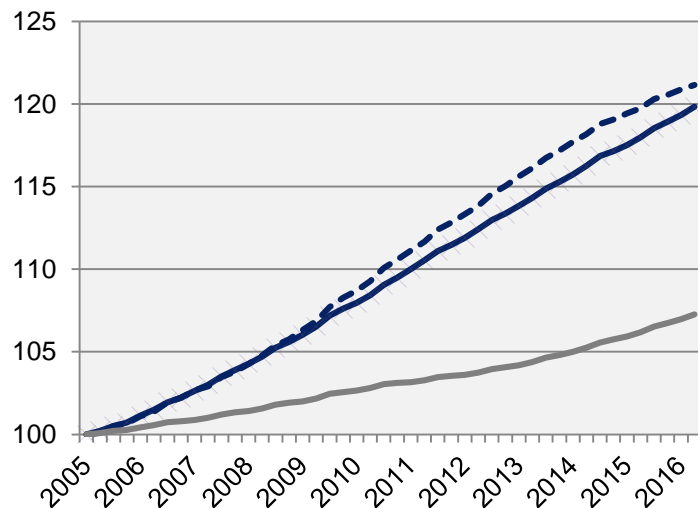
	<i>Number</i>	<i>Yearly change*</i>	<i>Unemployed out of population, 15-74 years</i>		
	2016 Q2		2010 Q1	2015 Q2	2016 Q2
Sweden	351 745	-6 912	6,2	4,9	4,8
Stockholm Region	155 063	-1 697	5,7	4,8	4,7
Stockholm county	68 081	-1 463	4,4	4,2	4,0
City of Stockholm	29 494	-1 235	4,7	4,4	4,1
Sweden, excl. Stockholm county	309 348	20 234	6,7	5,2	5,0

 Stockholm county

*Last four quarters

Population

Index 100 = 2005 Q1



Source: Statistics Sweden

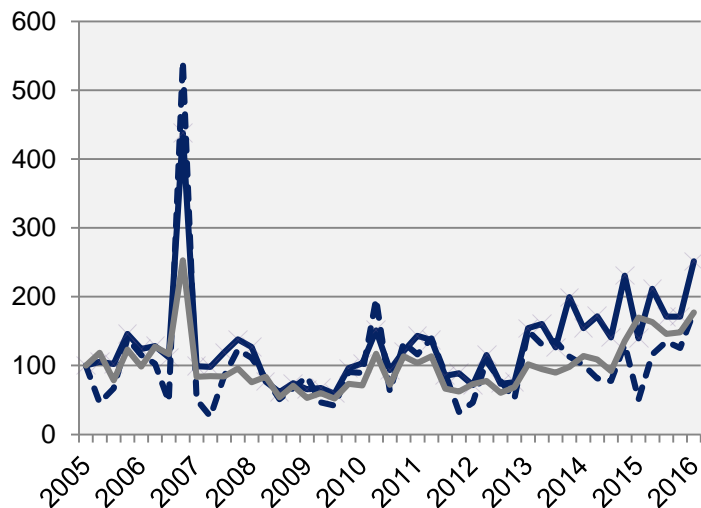
	2016 Q2 (in thousands)	Yearly ch. * (in thousands)	Growth (%) since,		
			2005 Q1	2010 Q1	2015 Q2
Sweden	9 906,3	113,2	9,9	5,9	1,2
Stockholm Region	4 461,6	58,1	13,2	7,8	1,3
Stockholm county	2 248,5	35,0	19,8	11,0	1,6
City of Stockholm	928,1	10,8	21,2	11,5	1,2
Sweden, excl. Stockholm county	7 657,9	78,2	7,3	4,5	1,0

 Stockholm county

*Development last four quarters

Number of housing projects started

Index 100 = 2005 Q1



Source: Statistics Sweden

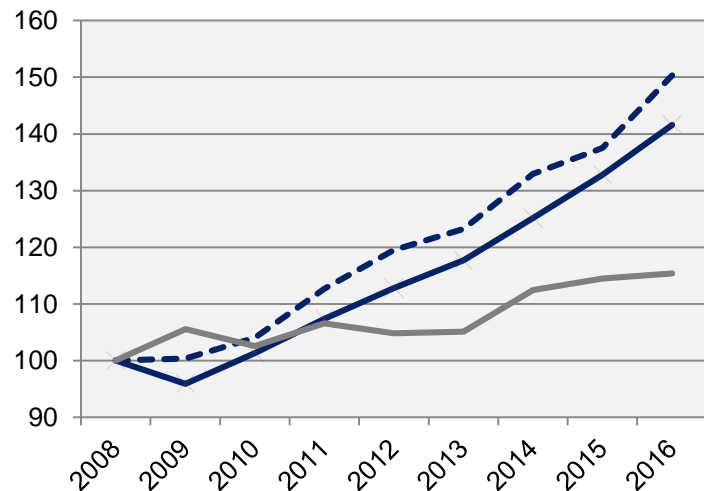
	2016 Q2		Yearly change*	
	Number	Ch., %	Number	Ch., %
Sweden	16 594	4,3	62 207	13,9
Stockholm Region	7 450	1,5	27 271	10,1
Stockholm county	4 350	6,7	15 794	13,4
City of Stockholm	1 879	54,5	6 456	64,6
Sweden, excl. Stockholm county	12 244	3,4	46 413	14,1

 Stockholm county

*Last four quarters

Commercial Accommodations

Index 100 = 2008 Q1 (Q1, 2008 - 2016)



	2016 Q2 (in thousands)	Yearly ch. *	Growth (%) since,		
			2008 Q2	2010 Q2	2015 Q2
Sweden	14 507	60 683	20,8	18,1	-0,2
Stockholm Region	6 084	25 167	25,2	21,7	2,6
Stockholm county	3 522	13 282	41,6	39,8	6,6
City of Stockholm	2 379	8 870	50,3	44,5	9,3
Sweden, excl. Stockholm county	10 985	47 490	15,4	12,5	0,8

— Stockholm county
- - - City of Stockholm

*Development last four quarters

Stockholm Business Region

Stockholm Business Region is responsible for developing and promoting Stockholm as a business and tourist destination under the brand Stockholm - The Capital of Scandinavia.

The aim is to make Stockholm the leading sustainable growth region in Europe.

Stockholm Business Region is owned by the city of Stockholm and has two subsidiaries Invest Stockholm and Stockholm Visitors Board.

For questions: Contact Stefan Frid, Invest Stockholm.
Publisher: Olle Zetterberg, CEO Stockholm Business Region

Stockholm Business Region

P.O. Box 16282

SE-103 25 Stockholm, Sweden

Phone + 46 8 508 280 00

www.visitstockholm.com

investstockholm.com

stockholmbusinessregion.se

