

## Stockholm's tourism industry. June 2017

A total of 1 317 658 overnight stays in commercial accommodations in Stockholm County during June meant an increase by 48 000 or 4 % compared to June 2016. The month showed the same pattern as the first half of 2017. Overnight stays from foreign visitors has increased faster than domestic guest nights. The Nordic markets have shown a relatively weak development, while more long-range visitors are increasing significantly.

Nordic overnight stays decreased by 5 % in June. The first half of the year has meant a slight rise for Norway and Finland, while Danish guest nights have fallen slightly.

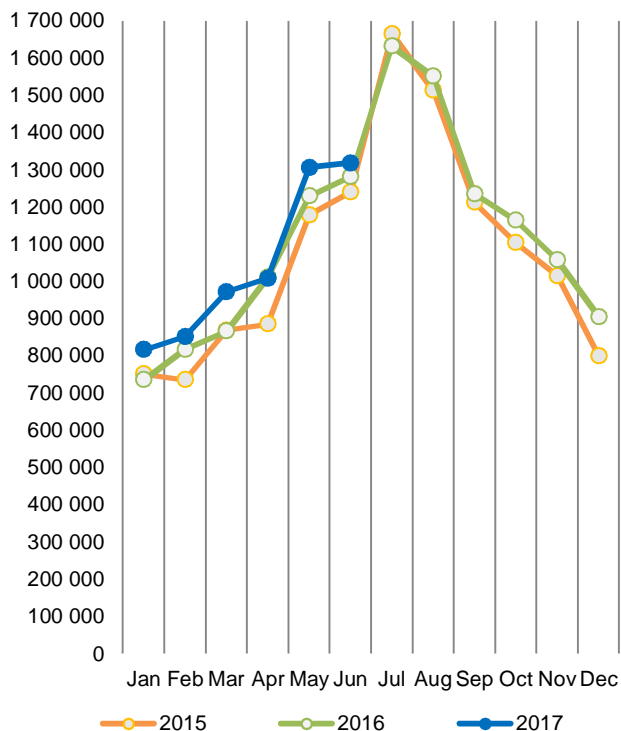
Visitors from Europe outside the Nordic countries have increased by 7 % during the first six months of the year. All major target groups have increased; Germany with 10 %, UK with 8 % and the Netherlands with a full 37 %.

Overnight stays from non European guests have shown the most positive trend, +25 % in June and +17% so far in 2017. Visitors from the United States have so far made 50,000 more overnight stays than last year – an increase of 31 %. Visitors from China have made 39% more overnight stays this year. For India, June was a positive month (+17 %), but so far in 2017, a slight decline in overnight stays is noted.

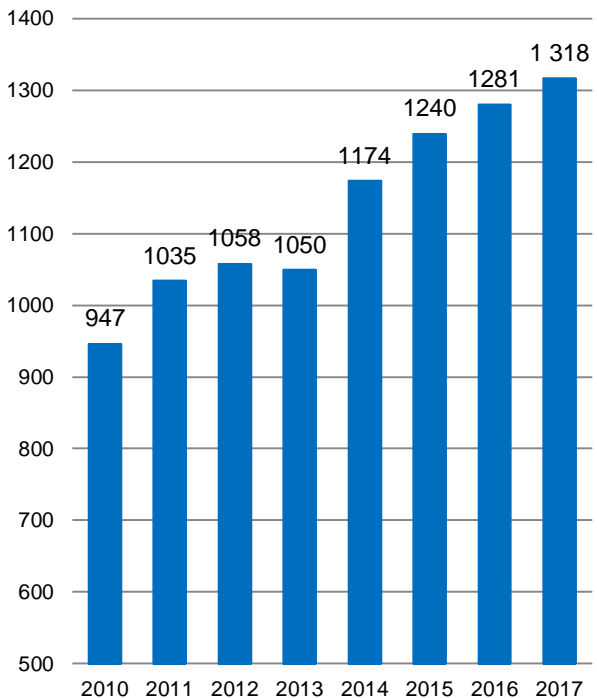
### Commercial overnight stays in Stockholm's county June 2017, top 20.

Target group	Guest nights	Change, %			
<b>Total</b>	<b>1,317,658</b>	<b>4%</b>			
<b>Sweden</b>	<b>726,515</b>	<b>-2%</b>			
<b>Foreign</b>	<b>591,143</b>	<b>12%</b>			
Ranking, Foreign	Guest nights	Change, %	Ranking, Foreign	Guest nights	Change, %
1 Germany	84,937	12%	11 Italy	15,012	11%
2 Not indicated	79,022	26%	12 The Netherlands	14,191	20%
3 USA	74,699	34%	13 Spain	13,155	10%
4 Great Britain	48,114	0%	14 India	12,931	17%
5 Norway	24,486	-9%	15 Japan	8,120	-7%
6 Finland	21,537	1%	16 Australia	7,284	1%
7 China	19,941	40%	17 Austria	7,226	17%
8 France	18,013	17%	18 Russia	6,103	27%
9 Switzerland	16,676	5%	19 Canada	5,408	6%
10 Denmark	15,043	-9%	20 Poland	5,333	-46%

**Commercial overnight stays by month 2015, 2016 and 2017, Stockholm county**



**Commercial overnight stays, June 2010-2016, Stockholm county. (Thousands)**



**Commercial overnight stays 2017 compared with previous year.**

	May 2017		YTD	
	Guest nights	Change, %	Guest nights	Change, %
<b>Stockholm County</b>	<b>1,317,658</b>	<b>4%</b>	<b>6,253,376</b>	<b>6%</b>
Domestic	726,515	-2%	4,059,266	4%
Foreign	591,143	12%	2,194,110	10%
Nordic countries, excl. Sweden	62,360	-5%	307,393	1%
Europe excl. Nordic countries	263,972	6%	984,980	7%
Non-European	264,811	25%	901,737	17%
<b>City of Stockholm</b>	<b>882,395</b>	<b>4%</b>	<b>4,241,838</b>	<b>6%</b>
Domestic	420,593	-1%	2,483,493	5%
Foreign	461,802	10%	1,758,345	8%
Nordic countries, excl. Sweden	47,237	-7%	236,673	0%
Europe excl. Nordic countries	200,172	7%	773,901	8%
Non-European	214,393	17%	747,771	11%
<b>Sweden</b>	<b>6,065,467</b>	<b>-1%</b>	<b>26,752,393</b>	<b>3%</b>

Commercial overnight stays: hotel, vacation villages, hostels, camping and commercially arranged private cottages and apartments.  
 Source: Statistics Sweden and Swedish Agency for Economic and Regional Growth, preliminary data.

## Commercial overnight stays by nationality, Stockholm county and City of Stockholm.

Country	Stockholm county						City of Stockholm					
	Guest nights 2016	Share in Sweden	June 2017			YTD 2017		June 2017		YTD 2017		
			Guest nights	Change %	Share in Sweden	Guest nights	Change %	Guest nights	Change %	Guest nights	Change %	
<b>Total</b>	<b>13,505,872</b>	<b>22%</b>	<b>1,317,658</b>	<b>4</b>	<b>22%</b>	<b>6,253,376</b>	<b>6</b>	<b>882,395</b>	<b>4</b>	<b>4,241,838</b>	<b>6</b>	
<b>Sweden</b>	<b>8,763,174</b>	<b>19%</b>	<b>726,515</b>	<b>-2</b>	<b>17%</b>	<b>4,059,266</b>	<b>4</b>	<b>420,593</b>	<b>-1</b>	<b>2,483,493</b>	<b>5</b>	
<b>Foreign</b>	<b>4,742,698</b>	<b>30%</b>	<b>591,143</b>	<b>12</b>	<b>33%</b>	<b>2,194,110</b>	<b>10</b>	<b>461,802</b>	<b>10</b>	<b>1,758,345</b>	<b>8</b>	
<b>Nordic countries excl. Sweden</b>	<b>690,563</b>	<b>13%</b>	<b>62,360</b>	<b>-5</b>	<b>13%</b>	<b>307,393</b>	<b>1</b>	<b>47,237</b>	<b>-7</b>	<b>236,673</b>	<b>0</b>	
<b>Europe excl. Nordic countries</b>	<b>2,246,459</b>	<b>32%</b>	<b>263,972</b>	<b>6</b>	<b>30%</b>	<b>984,980</b>	<b>7</b>	<b>200,172</b>	<b>7</b>	<b>773,901</b>	<b>8</b>	
<b>Non-European/ not indicated</b>	<b>1,805,676</b>	<b>53%</b>	<b>264,811</b>	<b>25</b>	<b>59%</b>	<b>901,737</b>	<b>17</b>	<b>214,393</b>	<b>17</b>	<b>747,771</b>	<b>11</b>	
<b>Europe</b>	<b>2,937,022</b>	<b>20%</b>	<b>326,332</b>	<b>3</b>	<b>24%</b>	<b>1,292,373</b>	<b>6</b>	<b>247,409</b>	<b>4</b>	<b>1,010,574</b>	<b>6</b>	
Austria	59,112	45%	7,226	17	38%	23,340	4	6,168	27	20,139	7	
Belarus	2,401	54%	330	275	66%	1,423	46	277	296	1,277	51	
Belgium	58,844	38%	5,267	4	38%	26,817	9	4,161	-1	22,191	7	
Bulgaria	7,069	49%	750	18	59%	2,704	3	641	27	2,264	11	
Croatia	4,111	33%	473	21	39%	2,979	35	401	40	2,344	26	
Czech Republic	15,032	22%	1,609	27	25%	7,230	6	1,091	17	5,288	6	
Denmark	167,880	15%	15,043	-9	17%	74,389	-2	11,810	-5	55,728	-2	
Estonia	19,619	28%	1,313	-27	25%	7,379	-23	905	5	4,912	-20	
Finland	221,350	38%	21,537	1	32%	100,366	3	15,588	-5	77,159	2	
France	154,873	52%	18,013	17	57%	69,477	6	14,990	21	59,586	7	
Georgia	5,250	52%	547	-11	56%	1,546	-10	392	-25	1,112	-24	
Germany	540,288	18%	84,937	12	19%	219,986	10	61,867	12	168,001	10	
Greece	14,903	63%	1,080	-26	57%	7,825	23	969	-23	6,833	24	
Hungary	13,300	41%	2,037	65	48%	9,492	98	1,376	36	5,360	35	
Iceland	13,931	53%	1,294	16	37%	7,859	20	1,031	14	6,592	16	
Ireland	36,987	69%	3,961	37	70%	17,492	-9	1,656	28	7,918	8	
Italy	135,255	54%	15,012	11	61%	56,541	17	12,912	11	48,263	15	
Latvia	17,272	42%	1,145	-23	28%	6,474	-24	810	2	4,412	-18	
Lithuania	34,135	49%	2,307	-26	43%	15,151	-9	1,399	10	8,844	6	
Luxembourg	9,376	62%	1,381	23	76%	4,403	-2	1,219	27	3,969	-1	
Netherlands	119,178	18%	14,191	20	18%	68,840	37	10,730	19	53,855	36	
Norway	287,402	8%	24,486	-9	8%	124,779	1	18,808	-11	97,194	-1	
Poland	99,230	31%	5,333	-46	21%	30,986	-34	3,575	-21	20,131	-6	
Portugal	13,246	44%	1,363	2	44%	6,175	10	1,204	9	5,368	10	
Romania	19,308	47%	2,526	16	35%	8,903	-1	1,808	0	7,258	-1	
Russia	58,004	45%	6,103	27	53%	34,190	24	4,840	24	28,649	29	
Slovakia	5,348	24%	415	-26	13%	1,941	-22	321	2	1,574	-10	
Slovenia	3,467	36%	414	16	49%	1,619	-1	269	-12	1,281	-9	
Spain	118,080	64%	13,155	10	66%	46,521	9	10,513	6	39,257	7	
Switzerland	138,972	37%	16,676	5	33%	53,064	8	13,156	-1	44,342	4	
Turkey	33,688	71%	2,743	-15	62%	12,290	-19	2,283	-19	10,730	-15	
UK	443,999	52%	48,114	0	52%	211,182	8	35,852	-2	167,671	7	
Ukraine	12,251	58%	1,449	27	71%	5,822	2	1,137	38	4,759	7	
Rest of Europe	53,861	42%	2,769	-46	28%	16,977	-16	2,050	-53	10,981	-39	

Visit Stockholm AB

visit@stockholm.se

+46 8 508 280 00

www.visitstockholm.com

Country	Stockholm county						City of Stockholm				
	Guest nights 2016	Share in Sweden	June 2017			YTD 2017		June 2017		YTD 2017	
			Guest nights	Change %	Share in Sweden	Guest nights	Change %	Guest nights	Change %	Guest nights	Change %
<b>North America</b>	<b>408,498</b>	<b>67%</b>	<b>80,107</b>	<b>31</b>	<b>71%</b>	<b>226,218</b>	<b>28</b>	<b>68,909</b>	<b>25</b>	<b>193,609</b>	<b>21</b>
Canada	38,409	65%	5,408	6	66%	16,747	-1	4,788	4	14,721	-3
USA	370,089	67%	74,699	34	71%	209,471	31	64,121	27	178,888	24
<b>Central &amp; South America</b>	<b>60,796</b>	<b>64%</b>	<b>10,821</b>	<b>5</b>	<b>72%</b>	<b>28,013</b>	<b>7</b>	<b>9,633</b>	<b>1</b>	<b>24,518</b>	<b>4</b>
Argentina	8,137	83%	1,991	44	83%	3,963	21	1,789	37	3,555	18
Brazil	25,873	65%	4,825	-8	71%	12,205	5	4,248	-14	10,861	4
Chile	3,113	67%	782	28	78%	1,909	27	693	30	1,604	19
Colombia	3,019	74%	621	38	75%	1,522	42	557	33	1,349	34
Mexico	9,431	72%	1,464	28	78%	3,671	3	1,312	29	3,259	0
Rest of Central & South America	11,223	47%	1,138	-24	53%	4,743	-7	1,034	-22	3,890	-13
<b>Asia</b>	<b>445,716</b>	<b>51%</b>	<b>58,999</b>	<b>22</b>	<b>49%</b>	<b>208,370</b>	<b>13</b>	<b>44,091</b>	<b>19</b>	<b>165,319</b>	<b>9</b>
China	119,814	37%	19,941	40	35%	61,047	39	13,876	39	48,976	36
India	104,186	59%	12,931	17	64%	54,603	-3	9,579	5	42,096	-12
Indonesia	5,037	75%	1,516	455	87%	3,028	136	1,321	435	2,721	134
Iran	5,614	61%	658	12	51%	1,758	12	568	16	1,461	10
Israel	12,400	67%	1,311	-6	66%	4,817	8	1,175	-6	4,136	6
Japan	57,820	62%	8,120	-7	68%	21,800	-2	5,444	-11	16,081	-3
Malaysia	5,184	65%	855	84	75%	2,318	15	750	79	2,037	25
Qatar	17,512	92%	296	-77	79%	4,737	-37	256	-27	882	-65
Saudi Arabia	8,227	62%	806	175	80%	2,365	26	737	176	2,077	28
Singapore	10,116	58%	1,988	33	66%	4,524	1	1,684	27	3,911	-5
South Korea	18,046	36%	2,502	41	33%	7,954	15	2,040	41	6,525	10
Taiwan	12,141	59%	2,506	22	71%	6,421	26	1,897	9	5,028	19
Thailand	25,451	74%	1,378	-29	67%	14,344	12	1,131	-37	12,733	7
United Arab Emirates	21,944	79%	1,822	36	83%	7,840	6	1,612	31	7,158	5
Rest of Asia	22,224	40%	2,369	47	34%	10,814	51	2,021	44	9,497	56
<b>Africa</b>	<b>29,499</b>	<b>53%</b>	<b>3,243</b>	<b>20</b>	<b>53%</b>	<b>10,846</b>	<b>-15</b>	<b>2,565</b>	<b>10</b>	<b>9,230</b>	<b>-14</b>
Egypt	3,107	44%	149	-13	51%	1,063	-23	91	-39	926	-25
Morocco	1,493	62%	202	117	62%	800	39	184	149	733	40
Namibia	7,027	85%	36	-96	16%	821	-72	3	-100	737	-73
South Africa	5,345	52%	895	21	60%	2,926	22	752	18	2,440	22
Rest of Africa	12,527	46%	1,961	180	52%	5,236	-6	1,535	198	4,394	5
<b>Oceania</b>	<b>57,056</b>	<b>65%</b>	<b>8,196</b>	<b>1</b>	<b>63%</b>	<b>23,941</b>	<b>-3</b>	<b>7,275</b>	<b>0</b>	<b>21,554</b>	<b>-2</b>
Australia	50,435	66%	7,284	1	64%	21,316	-2	6,464	-1	19,273	-2
New Zealand	6,184	63%	884	4	60%	2,402	-13	786	4	2,126	-1
Rest of Oceania	437	35%	28	-3	55%	223	-6	25	-4	155	128
<b>Rest of the World</b>	<b>180,014</b>	<b>44%</b>	<b>24,423</b>	<b>38</b>	<b>62%</b>	<b>82,017</b>	<b>-1</b>	<b>17,559</b>	<b>9</b>	<b>69,534</b>	<b>-10</b>
Not indicated	624,097	49%	79,022	26	55%	322,332	22	64,361	17	264,007	16