



Photographer: Jeppe Wikström

Stockholm's Tourism Industry: June 2019

The strong development of overnight stays in the county continues in June with an increase of 7%, some 100,000 more than in June 2018. This is three times the rate of the nation as a whole, in which the increase is 2%. In distinction from previous months, the Nordic neighbors account for the largest percentual growth in June (+30%). Domestic overnight stays are continuing to increase (+15%). If deducting unspecified nights from the category Foreign (where they are included), the foreign bednights also show an increase of 8%.

There are substantial increases from Germany (+34%), India (+31%) and Spain (+31%). Overnight stays from the distant source market China also increase in June (+14%).

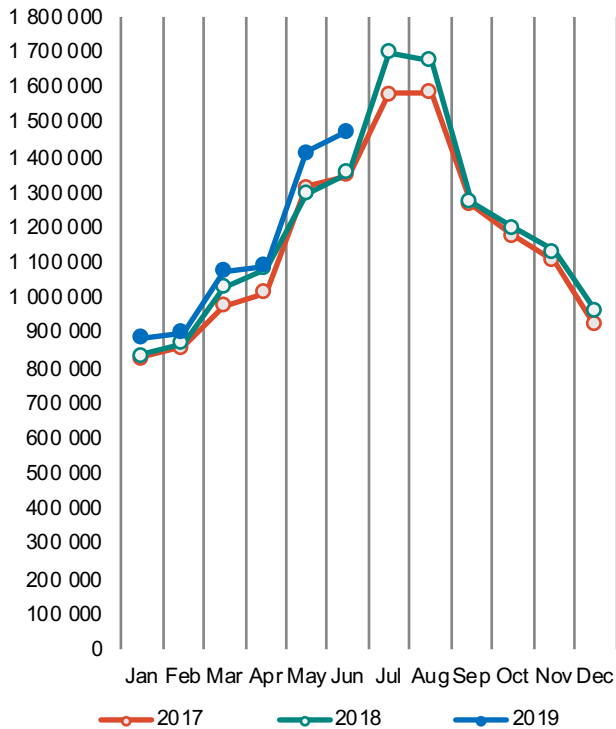
Guest nights which lack information about nationality are classified as "Rest of the World" (thus also "Foreign" and "Non-European"). This post, called "Not indicated" decreases also in June (-68%). This explains some of the negative percentages for those foreign categories. If the unspecified overnight stays are omitted from all calculations, the development of bed nights from foreign and non-European countries are +8% and -2%, respectively.

June 2019 sets a new record in the total number of registered overnight stays in the region. Never before has the number of bednights in Stockholm County been so high in the month of June.

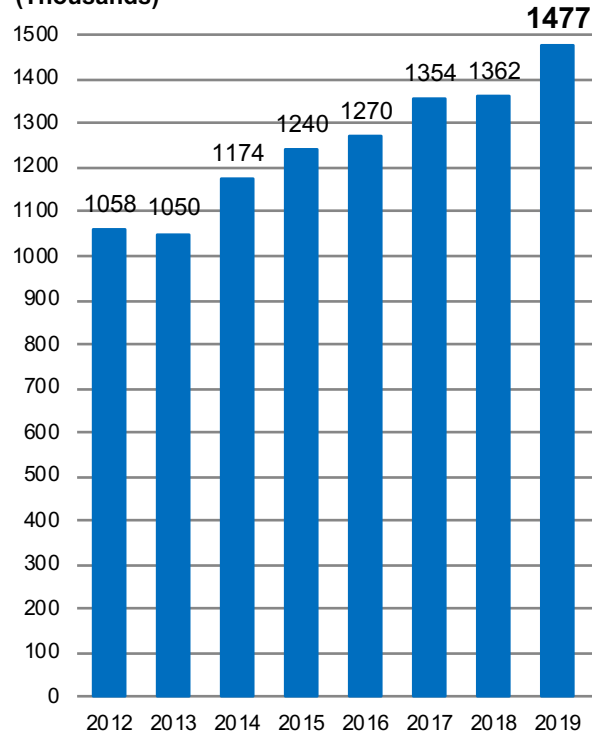
Commercial overnight stays in Stockholm County June 2019, top 20

Target group	Guest nights	Change, %	Target group	Guest nights	Change, %
Total	1 477 121	7%	Not Indicated	29 708	-68%
Sweden	883 815	15%			
Foreign	593 306	-3%			
Ranking, Foreign	Guest nights	Change, %	Ranking, Foreign	Guest nights	Change, %
1 Germany	103 718	34%	11 The Netherlands	16 119	-3%
2 USA	68 331	-7%	12 Spain	15 355	31%
3 Great Britain	42 141	-19%	13 Italy	12 511	-1%
4 Norway	27 967	29%	14 Austria	8 876	0%
5 Finland	27 469	30%	15 Poland	8 564	25%
6 China	22 158	14%	16 Japan	8 541	-6%
7 France	19 634	15%	17 Australia	8 248	0%
8 India	18 425	31%	18 Russia	8 114	24%
9 Switzerland	17 987	8%	19 Belgium	5 739	8%
10 Denmark	17 223	31%	20 Canada	4 387	-23%

Commercial overnight stays by month 2017, 2018 and 2019, Stockholm County



Commercial overnight stays, June 2012-2019, Stockholm County. (Thousands)



Commercial overnight stays 2019 compared with previous year.

	June 2019		YTD	
	Guest nights	Change, %	Guest nights	Change, %
Stockholm County	1 477 121	7%	6 882 329	4%
Domestic	883 815	15%	4 549 700	10%
Foreign	593 306	-3%	2 332 629	-5%
Nordic countries, excl. Sweden	74 245	30%	306 001	3%
Europe excl. Nordic countries	295 415	11%	1 127 307	9%
Non-European	223 646	-23%	899 321	-20%
City of Stockholm	991 607	7%	4 659 055	4%
Domestic	533 696	24%	2 793 525	14%
Foreign	457 911	-8%	1 865 530	-9%
Nordic countries, excl. Sweden	56 026	29%	235 129	2%
Europe excl. Nordic countries	227 635	9%	909 190	6%
Non-European	174 250	-28%	721 211	-25%
Sweden	6 759 809	2%	28 841 063	2%

Commercial overnight stays: hotel, vacation villages, hostels, camping and commercially arranged private cottages and apartments.

Source: Statistics Sweden and Swedish Agency for Economic and Regional Growth, preliminary data.

Commercial overnight stays by nationality, Stockholm County and City of Stockholm.

Country	Stockholm County						City of Stockholm				
	Guest nights 2018	Share in Sweden	June 2019			YTD 2019		June 2019		YTD 2019	
			Guest nights	Change %	Share in Sweden	Guest nights	Change %	Guest nights	Change %	Guest nights	Change %
Total	14 539 708	22%	1 477 121	7	22%	6 882 329	4	991 607	7	4 659 055	4
Sweden	8 962 597	19%	883 815	15	18%	4 549 700	10	533 696	24	2 793 525	14
Foreign	5 577 111	32%	593 306	-3	31%	2 332 629	-5	457 911	-8	1 865 530	-9
Nordic countries excl. Sweden	660 560	12%	74 245	30	15%	306 001	3	56 026	29	235 129	2
Europe excl. Nordic countries	2 472 327	33%	295 415	11	29%	1 127 307	9	227 635	9	909 190	6
Non-European/ not indicated	2 444 224	57%	223 646	-23	54%	899 321	-20	174 250	-28	721 211	-25
Europe	2 472 327	20%	369 660	15	25%	1 433 308	8	283 661	12	1 144 319	5
Austria	66 888	44%	8 876	0	45%	27 804	0	7 471	-2	23 892	1
Belarus	3 446	72%	275	36	44%	1 948	33	251	47	1 748	29
Belgium	64 749	33%	5 739	8	34%	28 659	0	4 835	8	24 485	-1
Bulgaria	5 262	40%	600	21	48%	3 090	22	512	13	2 565	14
Croatia	5 399	30%	642	2	46%	3 452	16	541	-9	2 966	8
Czech Republic	19 989	26%	2 670	50	25%	11 409	35	1 636	23	8 680	35
Denmark	156 439	12%	17 223	31	18%	74 279	12	13 552	38	57 432	15
Estonia	19 271	18%	2 632	85	47%	11 734	34	1 737	84	6 906	14
Finland	228 736	39%	27 469	30	37%	108 882	6	20 844	30	84 202	8
France	188 883	57%	19 634	15	58%	92 067	11	15 775	9	79 544	8
Georgia	3 949	46%	531	-38	31%	1 639	-8	431	-34	1 284	-8
Germany	586 919	19%	103 718	34	20%	256 067	17	79 128	38	205 570	19
Greece	17 582	65%	1 362	-6	59%	7 887	-4	1 150	-11	6 976	-3
Hungary	16 455	42%	1 774	6	46%	8 223	-1	1 458	6	6 571	9
Iceland	16 803	55%	1 586	18	40%	7 483	-7	1 317	15	6 449	-11
Ireland	34 083	57%	3 464	9	57%	16 551	12	1 874	-17	10 155	-4
Italy	163 665	59%	12 511	-1	55%	62 163	-5	10 424	-7	54 683	-8
Latvia	20 125	36%	1 701	19	34%	13 577	44	952	1	7 085	17
Lithuania	31 597	39%	4 196	56	55%	17 971	17	1 819	25	9 569	9
Luxembourg	9 247	64%	609	-56	55%	2 472	-41	535	-57	2 164	-44
Netherlands	157 678	21%	16 119	-3	18%	66 541	-4	11 857	0	49 911	-7
Norway	258 582	7%	27 967	29	9%	115 357	-3	20 313	23	87 046	-8
Poland	74 364	27%	8 564	25	28%	46 259	29	5 370	32	30 048	23
Portugal	18 250	46%	2 217	6	65%	8 886	18	1 859	20	7 691	20
Romania	22 336	38%	2 504	15	40%	11 741	24	1 971	24	9 568	21
Russia	83 276	53%	8 114	24	60%	43 890	14	6 394	15	37 203	10
Slovakia	6 363	14%	722	7	14%	3 861	22	540	15	2 994	18
Slovenia	3 869	35%	600	133	47%	2 494	29	412	84	1 884	48
Spain	143 790	66%	15 355	31	69%	61 298	20	13 316	27	54 509	19
Switzerland	143 262	36%	17 987	8	32%	53 340	1	14 641	4	45 796	-2
Turkey	27 122	65%	2 717	33	55%	13 595	-2	1 913	21	7 984	-34
UK	421 200	50%	42 141	-19	48%	199 913	-1	32 731	-24	162 789	-4
Ukraine	19 300	55%	3 548	169	74%	19 018	200	3 044	217	17 169	225
Rest of Europe	94 008	58%	3 893	-50	40%	29 758	-14	3 058	-51	26 801	-10

Visit Stockholm AB

visit@stockholm.se

+46 8 508 280 00

www.visitstockholm.com

Country	Stockholm County						City of Stockholm					
	Guest nights 2018	Share in Sweden	June 2019			YTD 2019		June 2019		YTD 2019		
			Guest nights	Change %	Share in Sweden	Guest nights	Change %	Guest nights	Change %	Guest nights	Change %	
North America	550 050	59%	72 718	-8	54%	234 275	-2	58 559	-15	188 720	-8	
Canada	42 285	64%	4 387	-23	58%	14 375	-23	3 900	-22	12 642	-25	
USA	507 765	59%	68 331	-7	54%	219 900	0	54 659	-14	176 078	-7	
Central & South America	72 558	66%	8 883	-26	63%	27 200	-9	7 701	-28	23 919	-6	
Argentina	10 893	78%	1 580	-38	74%	3 917	-20	1 404	-39	3 512	-22	
Brazil	28 166	71%	3 616	-11	72%	10 511	-3	3 191	-14	9 446	-1	
Chile	4 591	69%	672	36	73%	2 169	4	607	29	1 936	34	
Columbia	3 623	74%	271	-66	53%	1 627	0	248	-67	1 507	-4	
Mexico	9 331	76%	986	-42	67%	3 315	-16	875	-43	2 965	-17	
Rest of Central & South America	15 954	47%	1 758	-25	42%	5 661	-15	1 376	-26	4 553	-4	
Asia	551 141	57%	69 734	13	50%	253 019	4	49 277	13	184 106	0	
China	149 738	43%	22 158	14	36%	68 631	10	15 892	14	55 901	8	
India	156 849	73%	18 425	31	73%	84 821	7	10 688	38	47 497	-3	
Indonesia	7 470	79%	1 525	-5	84%	3 627	-13	1 185	-7	3 031	-16	
Iran	3 868	51%	189	-73	39%	870	-54	164	-75	747	-55	
Israel	16 792	67%	2 215	10	66%	6 891	26	1 778	-1	5 926	23	
Japan	63 912	69%	8 541	-6	66%	26 125	6	5 527	-6	18 272	1	
Malaysia	6 271	68%	863	-2	79%	2 753	-22	756	-8	2 506	-25	
Qatar	5 582	68%	285	-18	25%	930	-35	269	-9	835	-35	
Saudi Arabia	7 837	57%	1 496	58	67%	2 546	6	1 285	61	2 013	-2	
Singapore	11 933	58%	1 815	14	64%	5 349	-11	1 493	0	4 715	-15	
South Korea	19 804	40%	2 535	29	29%	7 879	13	2 196	28	6 967	18	
Taiwan	12 390	64%	1 645	-24	61%	4 987	-24	1 202	-15	3 695	-21	
Thailand	27 199	69%	3 302	59	79%	16 453	18	2 847	56	14 151	12	
United Arab Emirates	24 022	78%	1 491	-16	68%	6 808	-33	1 284	-5	5 427	-29	
Rest of Asia	37 474	54%	3 249	5	37%	14 349	5	2 711	2	12 423	0	
Africa	34 451	53%	3 400	-7	53%	16 147	0	2 712	-11	12 607	-8	
Egypt	3 056	52%	505	110	63%	1 784	36	383	78	1 570	28	
Morocco	3 014	73%	248	12	67%	2 600	138	231	32	2 481	156	
Namibia	3 524	63%	25	-91	6%	793	-14	25	-80	141	-58	
South Africa	7 711	55%	765	8	68%	2 924	-25	641	4	2 203	-36	
Rest of Africa	17 146	48%	1 857	-16	49%	8 046	-10	1 432	-25	6 212	-20	
Oceania	71 093	66%	9 150	-3	62%	27 107	-4	8 074	-8	24 220	-8	
Australia	63 201	66%	8 248	0	62%	23 941	-4	7 365	-4	21 665	-7	
New Zealand	7 272	65%	788	-32	57%	2 902	-8	682	-36	2 416	-16	
Rest of Oceania	620	52%	114	245	57%	264	23	27	93	139	-10	
Rest of the World	270 932	54%	30 053	-3	65%	108 819	-27	24 232	-11	94 060	-32	
Not indicated	893 999	55%	29 708	-68	47%	232 754	-45	23 695	-71	193 579	-47	