



Photographer: [mediabank.visitstockholm.com/Visit Stockholm](https://mediabank.visitstockholm.com/Visit%20Stockholm)

Stockholm's Tourism Industry: June 2020

In June, 435.873 overnight stays were made at the county's commercial accommodation facilities. That was almost 1.1 million fewer than in the same month in 2019 – a decrease of 71%. June, like March, April and May, was characterized by the ongoing Covid19 pandemic. During these four months, the county has lost more than 3.6 million guest nights compared to last year.

During June, foreign guest nights fell by 89%, which is the same proportion as in May. Domestic guest nights fell by 58%, which is a slightly smaller decline than previous during the pandemic. Stockholm County is hit harder by the decline

in travel than the country as a whole, and in the city of Stockholm the decline is greater (-81%) than in the rest of the county (-50%).

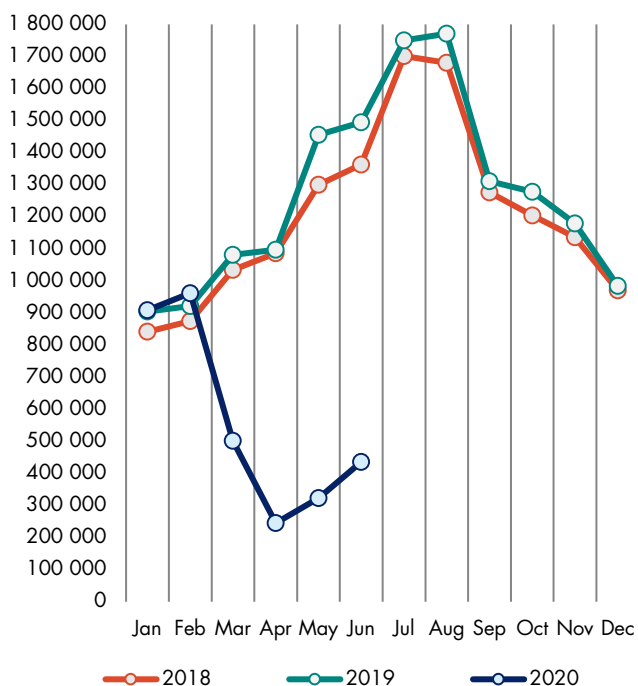
With a few exceptions, all foreign target groups show very sharp declines of 90% or more. India is an exception and has been the largest foreign target group in the county during the pandemic. The decline is also slightly lesser for Croatia, Lithuania, Poland and Romania.

In total for the first half of 2020, the number of guest nights in Stockholm County has decreased by 3.5 million or 51%.

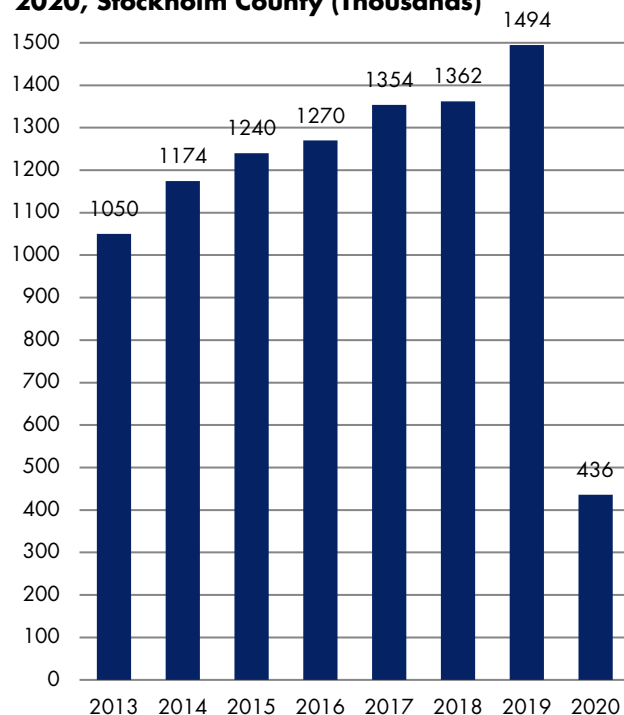
Commercial overnight stays in Stockholm County June 2020, top 20

Target group	Guest nights	Change, %	Target group	Guest nights	Change, %
Total	435.873	-71%	Not indicated	14.122	-55%
Sweden	369.690	-58%			
Foreign	66.183	-89%			
Ranking, Foreign	Guest nights	Change, %	Ranking, Foreign	Guest nights	Change, %
1 India	10.327	-47%	11 Romania	1.234	-49%
2 Germany	6.950	-93%	12 Switzerland	1.225	-93%
3 USA	5.778	-93%	13 France	1.065	-95%
4 Great Britain	3.849	-91%	14 Croatia	1.012	37%
5 Poland	2.416	-71%	15 Italy	684	-94%
6 The Netherlands	2.336	-87%	16 Estonia	683	-71%
7 Denmark	2.148	-87%	17 Spain	681	-95%
8 Norway	1.663	-94%	18 Czech Republic	508	-79%
9 Lithuania	1.365	-62%	19 Portugal	393	-81%
10 Finland	1.303	-95%	20 China	313	-98%

Commercial overnight stays by month 2018, 2019 and 2020, Stockholm County



Commercial overnight stays, June 2013-2020, Stockholm County (Thousands)



Commercial overnight stays 2020 compared with previous year

	June 2020		YTD	
	Guest nights	Change, %	Guest nights	Change, %
Stockholm County	435 873	-71%	3.419.499	-51%
Domestic	369.690	-58%	2.531.627	-44%
Foreign	66.183	-89%	887.872	-64%
Nordic countries, excl. Sweden	5.278	-92%	107.012	-64%
Europe excl. Nordic countries	26.361	-91%	382.251	-66%
Non-European	34.544	-86%	398.609	-62%
City of Stockholm	191.038	-81%	2.023.582	-57%
Domestic	152.760	-70%	1.344.254	-51%
Foreign	38.278	-92%	679.328	-66%
Nordic countries, excl. Sweden	3.247	-94%	80.059	-66%
Europe excl. Nordic countries	12.958	-94%	288.200	-68%
Non-European	22.073	-90%	311.069	-64%
Sweden	3.668.023	-48%	18.439.755	-37%

Commercial overnight stays: hotel, vacation villages, hostels, camping and commercially arranged private cottages and apartments.

Source: Statistics Sweden and Swedish Agency for Economic and Regional Growth, preliminary data.

Visit Stockholm AB

visit@stockholm.se

+46 8 508 280 00

www.visitstockholm.com

Commercial overnight stays by nationality, Stockholm County and City of Stockholm

Country	Stockholm County						City of Stockholm					
	Guest nights 2019	Share in Sweden	June 2020			YTD 2020		June 2020		YTD 2020		
			Guest nights	Change %	Share in Sweden	Guest nights	Change %	Guest nights	Change %	Guest nights	Change %	
Total	15.224.561	22%	435.873	-71	12%	3.419.499	-51	191.038	-81		-57	
Sweden	9.930.645	20%	369.690	-58	11%	2.531.627	-44	152.760	-70	1.344.254	-51	
Foreign	5.293.916	30%	66.183	-89	16%	887.872	-64	38.278	-92	679.328	-66	
Nordic countries excl. Sweden	671.850	12%	5.278	-92	5%	107.012	-64	3.247	-94	80.059	-66	
Europe excl. Nordic countries	2.599.245	32%	26.361	-91	12%	382.251	-66	12.958	-94	288.200	-68	
Non-European/ not indicated	2.022.821	53%	34.544	-86	44%	398.609	-62	22.073	-90	311.069	-64	
Europe	3.271.095	24%	31.639	-91	9%	489.263	-65	16.205	-94	368.259	-68	
Austria	70.437	45%	176	-98	12%	6.380	-77	101	-99	5.357	-78	
Belarus	3.934	59%	4	-98	100%	877	-52	4	-98	816	-51	
Belgium	68.871	33%	296	-95	23%	10.400	-64	210	-96	8.748	-65	
Bulgaria	6.132	47%	30	-95	2%	790	-75	26	-95	714	-73	
Croatia	8.877	50%	1.012	37	88%	12.269	236	58	-91	1.892	-40	
Czech Republic	24.779	30%	508	-79	30%	4.928	-55	249	-84	3.752	-56	
Denmark	167.458	12%	2.148	-87	7%	27.179	-63	1.254	-91	20.677	-64	
Estonia	22.633	29%	683	-71	29%	6.242	-43	327	-78	3.526	-44	
Finland	237.427	40%	1.303	-95	22%	36.792	-65	802	-96	26.921	-67	
France	212.199	57%	1.065	-95	52%	30.909	-66	867	-95	27.579	-65	
Georgia	4.712	36%	5	-99	7%	544	-69	4	-99	373	-73	
Germany	637.347	19%	6.950	-93	5%	63.347	-75	2.693	-97	47.621	-77	
Greece	19.737	70%	58	-95	42%	4.194	-47	47	-96	3.675	-46	
Hungary	16.989	44%	120	-93	36%	2.594	-67	99	-93	2.096	-66	
Iceland	15.493	47%	164	-90	42%	2.156	-70	76	-94	1.685	-73	
Ireland	36.206	64%	139	-96	21%	6.331	-61	112	-94	3.656	-64	
Italy	158.425	57%	684	-94	31%	17.006	-72	394	-96	14.556	-73	
Latvia	21.939	36%	128	-92	11%	3.765	-71	53	-94	2.195	-66	
Lithuania	32.988	49%	1.365	-62	40%	14.291	-15	498	-67	4.803	-45	
Luxembourg	5.699	48%	261	-54	76%	1.126	-54	234	-55	969	-55	
Netherlands	163.038	20%	2.336	-87	18%	24.609	-65	646	-95	17.321	-66	
Norway	251.472	7%	1.663	-94	2%	40.885	-64	1.115	-94	30.776	-65	
Poland	92.899	29%	2.416	-71	18%	20.332	-54	1.406	-75	13.038	-55	
Portugal	21.169	47%	393	-81	23%	3.924	-55	193	-90	2.955	-61	
Romania	28.392	42%	1.234	-49	31%	10.591	-9	735	-63	9.146	-6	
Russia	86.024	55%	55	-99	16%	20.267	-53	40	-99	17.710	-52	
Slovakia	9.117	20%	152	-77	47%	1.903	-46	19	-96	1.360	-50	
Slovenia	5.564	47%	59	-89	16%	1.384	-41	52	-86	890	-50	
Spain	152.294	66%	681	-95	32%	17.070	-72	463	-96	14.892	-73	
Switzerland	150.872	36%	1.225	-93	16%	11.342	-80	905	-94	9.572	-81	
Turkey	26.661	65%	111	-96	71%	4.825	-64	90	-95	3.860	-52	
UK	433.411	48%	3.849	-91	29%	63.630	-70	2.188	-94	50.643	-71	
Ukraine	38.636	69%	58	-98	13%	8.126	-56	38	-99	7.379	-57	
Rest of Europe	39.264	36%	308	-91	30%	8.255	-59	207	-93	7.106	-60	

Visit Stockholm AB

visit@stockholm.se

+46 8 508 280 00

www.visitstockholm.com

Country	Stockholm County						City of Stockholm				
	Guest nights 2019	Share in Sweden	June 2020			YTD 2020		June 2020		YTD 2020	
			Guest nights	Change %	Share in Sweden	Guest nights	Change %	Guest nights	Change %	Guest nights	Change %
North America	616.941	55%	5.939	-93	31%	98.577	-62	3.779	-95	74.850	-66
Canada	39.878	62%	161	-97	86%	4.299	-75	85	-98	3.585	-76
USA	577.063	54%	5.778	-93	30%	94.278	-61	3.694	-95	71.265	-65
Central & South America	64.627	59%	267	-97	22%	7.933	-71	212	-97	7.207	-70
Argentina	9.360	77%	43	-97	98%	1.153	-69	37	-97	1.064	-69
Brazil	24.837	67%	18	-99	50%	2.356	-77	6	-100	2.170	-77
Chile	4.811	70%	113	-82	86%	1.123	-46	94	-84	1.016	-46
Columbia	4.057	69%	8	-97	8%	466	-71	0	-100	434	-72
Mexico	8.788	70%	15	-98	48%	1.090	-67	12	-99	1.011	-66
Rest of Central & South America	12.774	47%	70	-96	8%	1.745	-70	63	-95	1.512	-68
Asia	586.938	55%	10.991	-84	88%	112.068	-57	5.606	-89	74.697	-62
China	164.898	41%	313	-98	60%	15.187	-77	272	-98	13.072	-77
India	169.440	74%	10.327	-47	95%	67.160	-25	5.057	-60	35.943	-34
Indonesia	6.570	72%	25	-98	89%	775	-77	4	-100	697	-76
Iran	2.722	47%	0	-100	0%	419	-51	0	-100	376	-49
Israel	16.690	66%	2	-100	40%	1.453	-79	0	-100	1.284	-79
Japan	62.320	65%	1	-100	2%	6.575	-74	0	-100	5.648	-69
Malaysia	5.784	60%	0	-100	0%	747	-71	0	-100	659	-72
Qatar	5.407	43%	34	-88	51%	556	-37	34	-87	531	-34
Saudi Arabia	7.130	57%	3	-100	10%	1.612	-37	3	-100	1.246	-40
Singapore	12.402	58%	27	-99	69%	1.310	-75	26	-98	1.180	-75
South Korea	20.725	38%	0	-100	0%	1.921	-76	0	-100	1.722	-77
Taiwan	12.135	52%	3	-100	60%	939	-80	2	-100	744	-80
Thailand	35.091	66%	23	-99	26%	5.148	-68	22	-99	4.865	-65
United Arab Emirates	34.143	78%	68	-97	55%	4.695	-66	59	-97	3.669	-65
Rest of Asia	31.481	46%	165	-95	36%	3.571	-75	127	-95	3.061	-75
Africa	33.776	49%	127	-96	19%	4.705	-71	103	-96	3.706	-71
Egypt	3.189	51%	6	-99	75%	577	-68	0	-100	515	-68
Morocco	4.044	66%	40	-85	91%	414	-83	37	-85	380	-84
Namibia	2.242	63%	0	-100	0%	648	-30	0	-100	490	345
South Africa	6.379	50%	42	-94	41%	875	-69	32	-95	749	-65
Rest of Africa	17.922	44%	39	-98	8%	2.191	-74	34	-98	1.572	-76
Oceania	68.238	61%	144	-98	38%	8.038	-72	120	-99	7.367	-72
Australia	60.314	64%	133	-98	44%	7.353	-71	109	-99	6.755	-71
New Zealand	7.364	63%	9	-99	13%	574	-80	9	-99	520	-78
Rest of Oceania	560	9%	2	-98	25%	111	-65	2	-92	92	-51
Rest of the World	229.574	50%	2.954	-93	21%	71.902	-65	2.587	-93	67.521	-65
Not indicated	422.727	49%	14.122	-55	46%	95.386	-60	9.666	-64	75.721	-63

Visit Stockholm AB

visit@stockholm.se

+46 8 508 280 00

www.visitstockholm.com