

Stockholm Economy Q4 2015

March 2016



Photo: Henrik Trygg

Stockholm Economy

Q4 2015

About the report

The report is published each quarter by Stockholm Business Region. The report includes Stockholm County and the City of Stockholm.

Statistics used is collected from Statistics Sweden, The Labour Exchange and The Swedish Companies Registration Office.

The report can be downloaded from:
<http://www.stockholmbusinessregion.se/en/facts--figures/#facts-about-business>

The Stockholm Region is defined as Stockholm County, Uppsala County, Gävleborg County, Västmanland County, Örebro County and Södermanland County. Individual county reports for the above mentioned can be found in Swedish here:
<http://www.stockholmbusinessalliance.se/konjunkturrapporter/>

Questions can be addressed to Stefan Frid at Stockholm Business Region Development. Publisher: Olle Zetterberg.

Continued strong economy in Stockholm

Stockholm's economic growth continued during the fourth quarter of 2015. Aggregated gross pay data show positive growth figures both for Stockholm County as well as the City of Stockholm compared to the same quarter 2014.

6 591 new companies were registered in Stockholm County during the last quarter of 2015, whereof the City of Stockholm accounted for 3 996. This represents a 10 % increase for the county and 15 % increase for the city compared to the fourth quarter 2014.

The number of people employed has increased during the last quarter. The number of listed positions increased and the number of people given notice decreased. The unemployment rate continued to decrease both in Stockholm County and the City of Stockholm compared with the same quarter 2014.

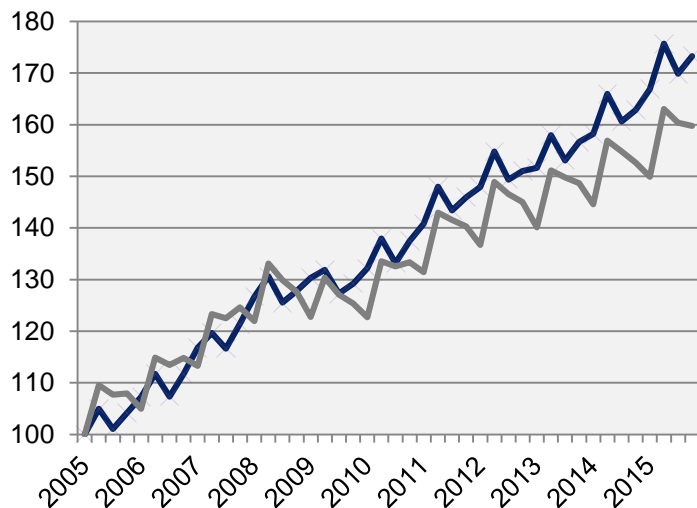
In 2015 the number of residents has increased by 33 400 in Stockholm County, of which the City of Stockholm accounted for 11 500, representing a 2% increase for the county and 1% increase for the city.

The number of housing projects decreased in both the county and the City of Stockholm in relation to the same quarter last year. In total 12 700 apartments were started in Stockholm County during the last four quarters, whereof about 4 500 in the City of Stockholm.

Olle Zetterberg
CEO Stockholm Business Region

Economic growth, private sector

Index 100 = 2005 Q1



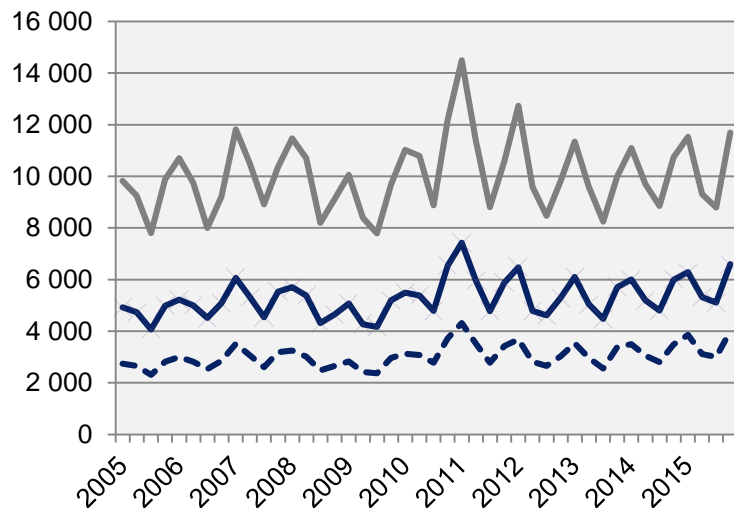
	2015 Q4	Change (%) since,		
	Billion cr.	2005 Q1	2010 Q1	2014 Q4
Sweden	289,8	64,0	30,5	5,2
Stockholm Region	130,1	70,3	31,2	5,9
Stockholm county	95,7	73,3	31,1	6,4
City of Stockholm	62,7	i.u.	33,0	7,1
Sweden, excl. Stockholm county	194,0	59,8	30,2	4,7

— Stockholm county

Economic growth, 2015 Q4

	Stockholm county				City of Stockholm			
	Billion cr.	Growth (%) since,			Billion cr.	Growth (%) since,		
		2009 Q1	2010 Q1	2014 Q4		2009 Q1	2010 Q1	2014 Q4
Total	116,7	31,7	30,0	6,0	72,9	33,1	31,1	6,6
Agriculture, forestry & fishing	0,2	57,4	39,0	8,3	0,0	130,5	51,3	1,1
Manufacturing, mining, quarrying & utilities	8,5	4,1	8,1	2,4	4,1	9,4	9,6	0,6
Energy & Environment	1,1	37,3	35,6	8,8	0,5	-13,2	-2,6	14,9
Construction	7,2	63,9	58,8	10,3	3,5	81,8	97,8	11,2
Trade	15,2	27,8	22,2	5,9	8,7	33,2	25,4	7,5
Transport	5,2	20,3	16,3	3,0	2,4	21,7	15,1	5,1
Accommodation & food services	3,5	85,2	72,2	10,3	2,5	83,3	72,3	8,7
Information & communication	11,3	20,5	24,6	4,2	9,3	25,7	30,4	4,9
Financial & insurance	7,8	-2,4	-0,4	2,7	6,2	-5,0	-3,0	2,2
Real Estate	2,2	59,3	53,9	9,7	1,5	54,7	51,4	12,3
Business services	19,0	50,4	50,0	8,7	15,0	51,0	50,9	9,7
Public administration	0,1	38,4	25,3	-11,5	0,1	29,5	21,7	-8,5
Education	2,7	58,4	50,4	7,1	1,6	61,0	54,0	8,1
Health	7,4	72,0	54,1	10,3	4,3	69,6	49,2	11,8
Personal & cultural services	4,0	47,8	41,3	5,5	3,0	44,9	37,8	4,7
Unspecified	0,3	44,7	72,0	16,0	0,1	55,8	24,0	49,5
Private sector	95,7	33,0	31,1	6,4	62,7	34,5	33,0	7,1
State	8,3	33,4	30,1	3,3	5,8	28,0	23,3	3,0
Municipal	9,5	22,6	20,9	5,5	3,6	19,2	16,7	6,9
County council	3,1	18,7	25,1	1,5	0,8	25,5	14,1	1,6
Public sector	21,0	26,0	25,0	4,0	10,2	24,6	20,1	4,2

The number of newly registered businesses

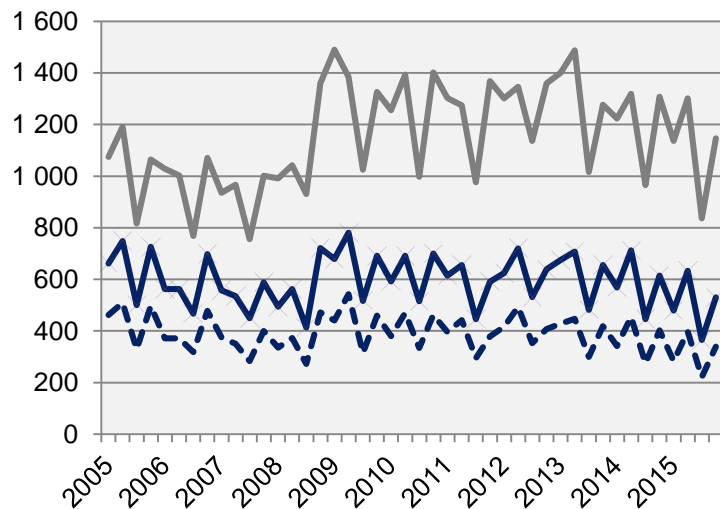


	2015 Q4		Yearly change*	
	Number	Ch., %	Number	Ch., %
Sweden	18 284	9,3	64 625	3,6
Stockholm Region	8 701	9,1	30 826	5,5
Stockholm county	6 591	10,0	23 298	6,0
City of Stockholm	3 996	14,6	13 964	8,8
Sweden, excl. Stockholm county	11 693	8,9	41 327	2,3

*Last four quarters

 Stockholm county

Company bankruptcies



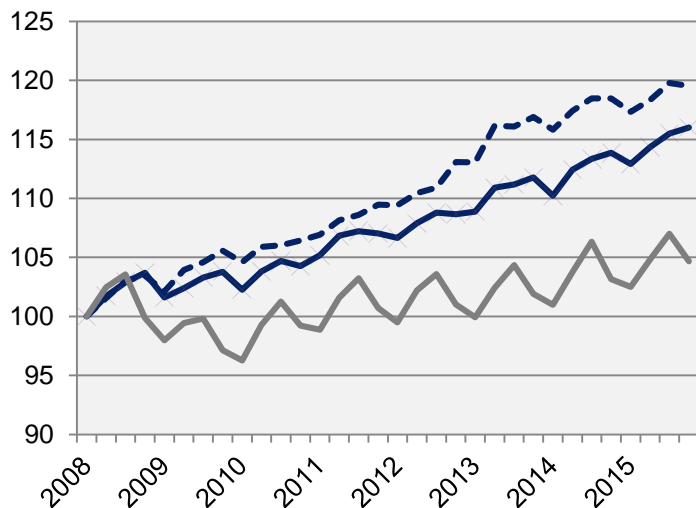
	2015 Q4		Yearly change*	
	Number	Ch., %	Number	Ch., %
Sweden	1 676	-12,8	6 426	-10,2
Stockholm Region	733	-14,1	2 827	-11,4
Stockholm county	530	-13,7	2 007	-14,2
City of Stockholm	339	-15,7	1 243	-15,7
Sweden, excl. Stockholm county	1 146	-12,3	4 419	-8,2

*Last four quarters

 Stockholm county

Employment rate

Index 100 = 2008 Q1



	Number	<i>Growth</i>	<i>Growth (%) since,</i>		
	2015 Q4	Yearly ch.*	2008 Q1	2010 Q1	2014 Q4
Sweden	4 847 300	74 600	7,2	9,8	1,6
Stockholm Region	1 876 700	25 500	11,4	11,1	1,4
Stockholm county	1 188 000	22 100	16,0	13,4	1,9
City of Stockholm	520 300	4 600	19,5	14,3	0,9
Sweden, excl. Stockholm county	3 659 300	52 500	4,7	8,7	1,5

— Stockholm county

- - - City of Stockholm

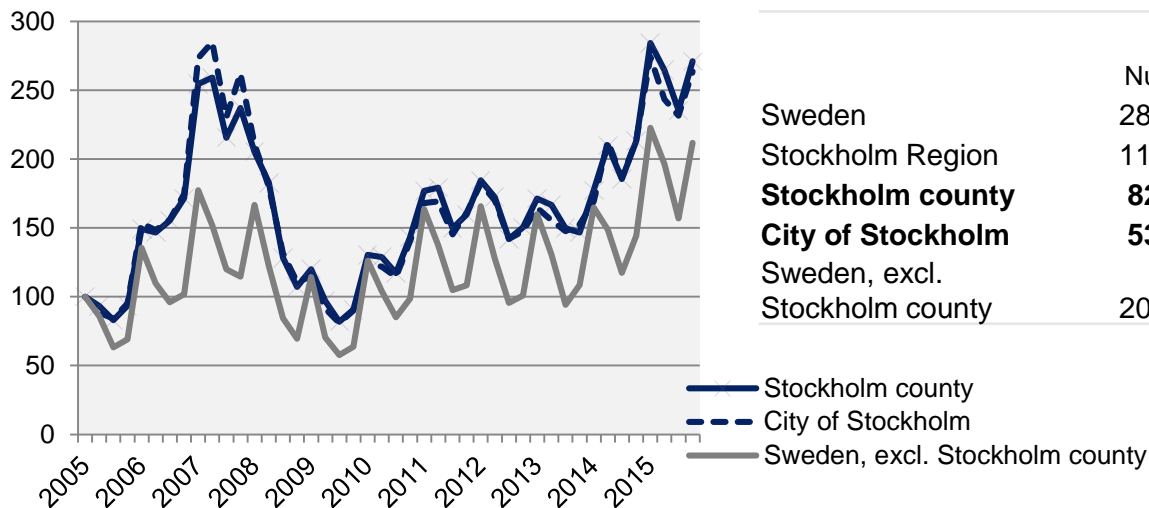
*Last four quarters

The number of employed people in Stockholm County

	Number	<i>Growth</i>	<i>Growth (%) since,</i>		
	2015 Q4	Yearly ch.*	2008 Q1	2010 Q1	2014 Q4
Total	1 188 000	22 100	16,0	13,4	1,9
Agriculture, forestry & fishing	4 400	-200	37,5	37,5	-4,3
Manufacturing, mining, quarrying & utilities	59 400	600	2,1	1,7	1,0
Manufacturing of workshop products	29 100	2 700	1,7	-3,0	10,2
Construction	64 600	3 600	7,7	13,7	5,9
Trade	142 200	4 800	5,8	11,8	3,5
Transport	57 400	1 900	8,1	5,3	3,4
Accommodation & food services	47 700	5 700	33,2	28,6	13,6
Information & communication	88 100	-2 000	15,3	11,2	-2,2
Arts, entertainment, recreation & other services	69 900	-100	11,8	9,2	-0,1
Financial & insurance	303 700	13 500	26,0	18,2	4,7
Public administration	77 700	-6 500	19,7	8,7	-7,7
Education	126 900	3 800	20,9	15,0	3,1
Health	138 600	-2 100	11,7	12,9	-1,5
Unspecified	0	-2 400			-100,0
Employed in Sweden	1 182 600	22 900	15,9	13,3	2,0
Employed abroad	5 400	-800	58,8	45,9	-12,9

Number of recently listed positions

Index 100 = 2005 Q1

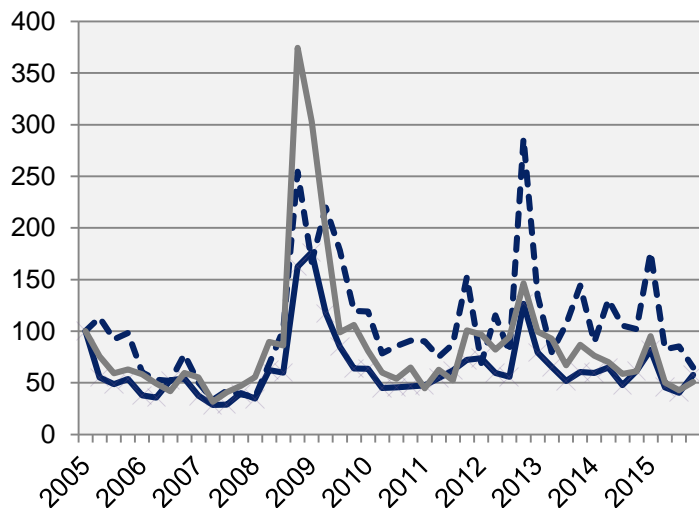


	2015 Q4		Yearly growth*	
	Number	Ch., %	Number	Ch., %
Sweden	283 435	40,4	1 068 389	36,1
Stockholm Region	117 247	30,1	452 751	33,6
Stockholm county	82 214	27,1	320 195	34,3
City of Stockholm	53 347	23,3	204 948	29,5
Sweden, excl. Stockholm county	201 221	46,7	748 194	36,9

*Last four quarters

The number of people given notice

Index 100 = 2005 Q1



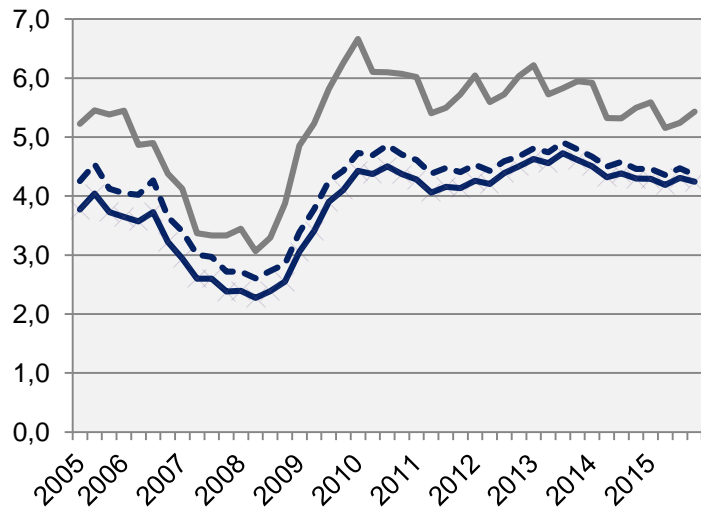
Source: The Labor Exchange

	2015 Q4		Yearly change*	
	Number	Ch., %	Number	Ch., %
Sweden	9 692	-13,5	43 142	-8,4
Stockholm Region	4 505	-2,0	18 415	-0,7
Stockholm county	3 093	-5,9	12 085	-3,3
City of Stockholm	951	-36,6	6 008	-4,3
Sweden, excl. Stockholm county	6 599	-16,7	31 057	-10,2

 Stockholm county

*Last four quarters

Unemployment in relation to the population (%), 15-74 years



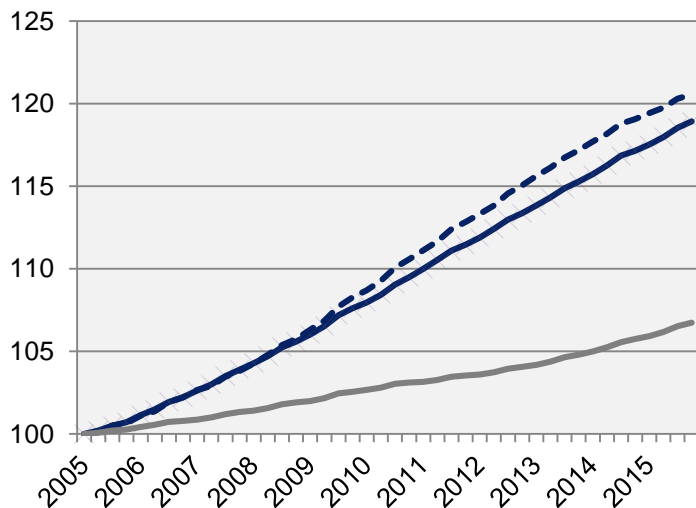
	Number	Yearly change*	<i>Unemployed out of population, 15-74 years</i>		
	2015 Q4		2010 Q1	2014 Q4	2015 Q4
Sweden	376 052	-1 715	6,2	5,2	5,2
Stockholm Region	134 463	1 817	5,5	4,9	4,9
Stockholm county	70 747	61	4,4	4,3	4,2
City of Stockholm	30 868	-333	4,7	4,5	4,4
Sweden, excl. Stockholm county	305 305	-1 776	6,7	5,5	5,4

 Stockholm county

*Last four quarters

Population

Index 100 = 2005 Q1



Source: Statistics Sweden

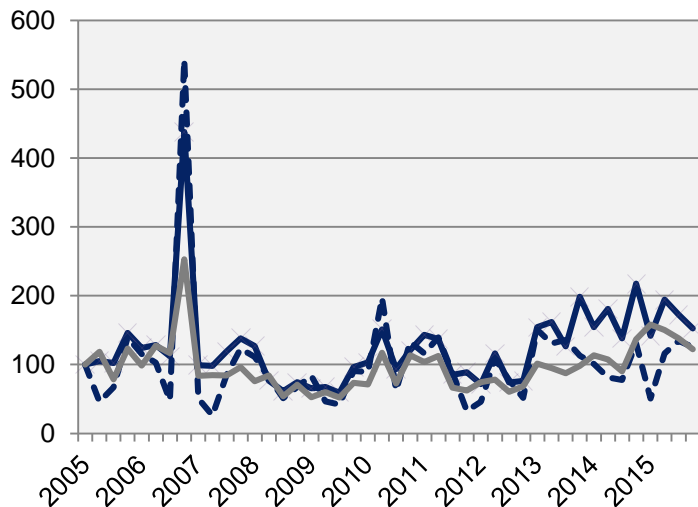
	2015 Q4 (in thousands)	Yearly ch. *	Growth (%) since,		
			2005 Q1	2010 Q1	2014 Q4
Sweden	9 851,0	103,7	9,3	5,3	1,1
Stockholm Region	3 706,4	48,9	14,0	7,9	1,3
Stockholm county	2 231,4	33,4	18,9	10,2	1,5
City of Stockholm	923,5	11,5	20,6	10,9	1,3
Sweden, excl. Stockholm county	7 619,6	70,3	6,7	4,0	0,9

 Stockholm county

*Development last four quarters

Number of housing projects started

Index 100 = 2005 Q1



Source: Statistics Sweden

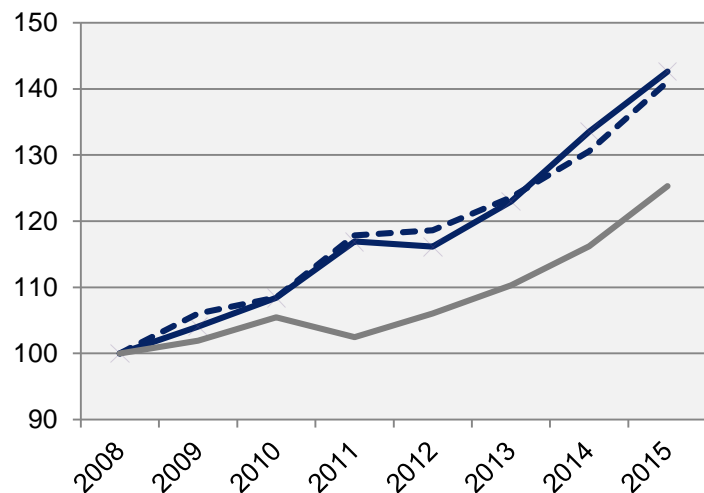
	2015 Q4		Yearly change*	
	Number	Ch., %	Number	Ch., %
Sweden	11 800	-16,3	53 974	17,9
Stockholm Region	4 061	-32,2	19 748	4,8
Stockholm county	2 944	-29,8	12 743	-4,3
City of Stockholm	1 312	-3,9	4 456	9,1
Sweden, excl. Stockholm county	8 856	-10,6	41 231	27,1

*Last four quarters

 Stockholm county

Commercial Accommodations

Index 100 = 2008 Q4 (Q4, 2008 - 2015)



	2015 Q4 (in thousands)	Yearly ch.*	Growth (%) since,		
			2008 Q4	2010 Q4	2014 Q4
Sweden	9 889	59 881	29,9	22,3	7,5
Stockholm Region	3 807	18 117	36,0	25,8	7,3
Stockholm county	2 905	12 981	42,6	31,6	6,8
City of Stockholm	1 991	8 591	41,1	30,1	8,1
Sweden, excl. Stockholm county	6 984	46 900	25,3	18,8	7,8

— Stockholm county

- - - City of Stockholm

*Development last four quarters

Stockholm Business Region

Stockholm Business Region is responsible for developing and promoting Stockholm as a business and tourist destination under the brand Stockholm - The Capital of Scandinavia.

The aim is to make Stockholm the leading sustainable growth region in Europe.

Stockholm Business Region is owned by the city of Stockholm and has two subsidiaries Stockholm Business Region Development and Stockholm Visitors Board.

For questions: Contact Stefan Frid, Stockholm Business Region.
Publisher: Olle Zetterberg, CEO Stockholm Business Region

Stockholm Business Region

P.O. Box 16282

SE-103 25 Stockholm, Sweden

Phone + 46 8 508 280 00

www.visitstockholm.com

investstockholm.com

stockholmbusinessregion.se

