

Stockholm Economy

Q1 2017

June 2017



Stockholm Economy

Q1 2017

About the report

The report is published each quarter by Stockholm Business Region. The report includes Stockholm County and the City of Stockholm.

Statistics used is collected from Statistics Sweden, The Labour Exchange and The Swedish Companies Registration Office.

The report can be downloaded from:

<http://www.stockholmbusinessregion.se/en/facts--figures/#facts-about-business>

The Stockholm Region is defined as Stockholm County, Uppsala County, Södermanland County, Östergötland County, Örebro County, Västmanland County, Gävleborg County and Dalarna County. Individual county reports for the above mentioned can be found in Swedish here: <http://www.stockholmbusinessalliance.se/konjunkturrapporter/>

Questions can be addressed to Stefan Frid at Invest Stockholm.
Publisher: Olle Zetterberg.

Positive figures for Stockholm

During the first quarter of 2017 Stockholm's economic growth continued. Aggregated gross pay data show positive growth figures both for Stockholm County and the City of Stockholm compared to the same quarter 2016.

In total 6 852 new companies were registered in Stockholm County during the first quarter of 2017, whereof the City of Stockholm accounted for 4 050. This represents a minor increases for both the county and the city compared to the first quarter of 2016.

During the last quarter the number of persons employed increased as did the number of listed positions. The largest percentage increase of both employment and listed positions were in the transport sector. The number of people given notice decreased in both the county and the city of Stockholm. The unemployment rate continued to decrease both in Stockholm County and the City of Stockholm compared to the same quarter in 2016.

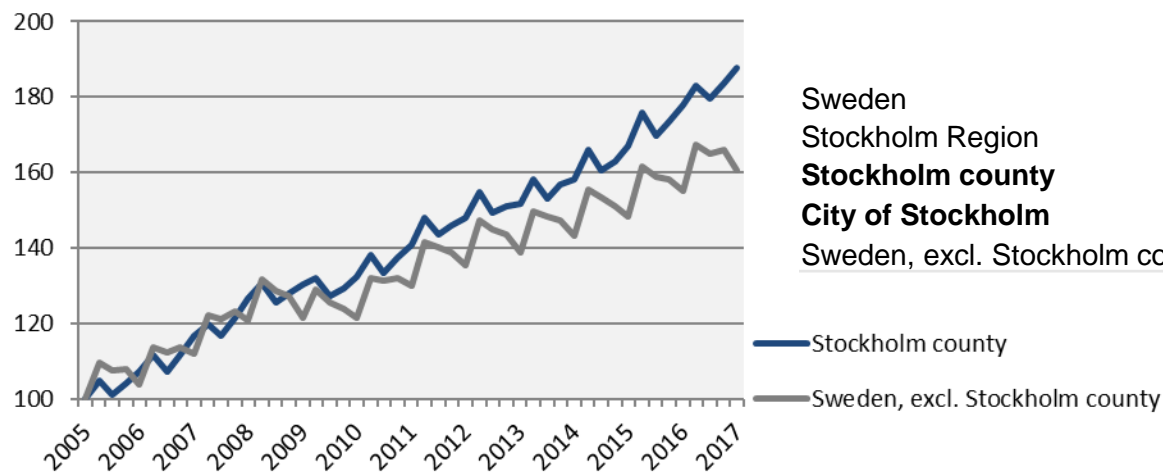
The last four quarters the number of residents has increased by 38 600 in Stockholm County, of which the City of Stockholm accounted for 13 300, representing a 1,7 % increase for the county and 1,4 % for the city.

The number of housing projects decreased in both the county and the City of Stockholm in relation to the same quarter last year. In total, construction of 18 300 apartments were started in Stockholm County during the last four quarters, whereof about 6 200 in the City of Stockholm.

Olle Zetterberg
CEO Stockholm Business Region

Economic growth, private sector

Index 100 = 2005 Q1

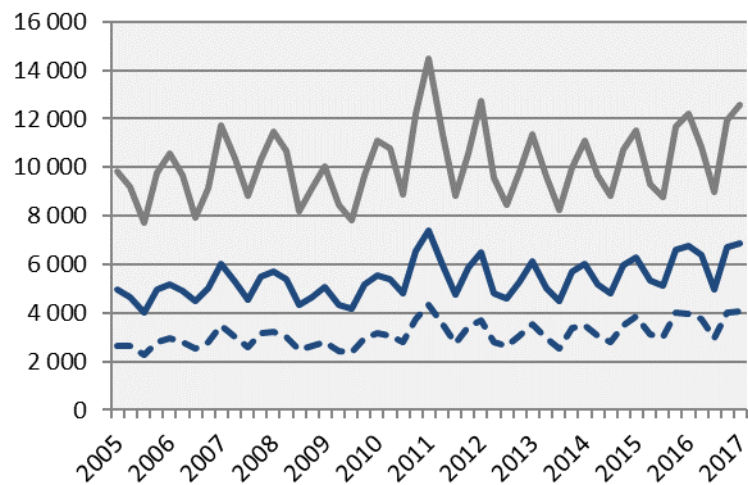


	2017 Q1	Change (%) since,		
	Billion SEK	2005 Q1	2010 Q1	2016 Q1
Sweden	300,6	69,0	35,4	4,2
Stockholm Region	156,7	77,6	38,3	4,8
Stockholm county	103,6	87,6	41,9	5,5
City of Stockholm	67,7	i.u.	43,7	4,2
Sweden, excl. Stockholm county	197,0	60,6	32,3	3,5

Economic growth, 2017 Q1

	Stockholm county				City of Stockholm			
	Billion SEK	Growth (%) since,			Billion SEK	Growth (%) since,		
		2009 Q1	2010 Q1	2016 Q1		2009 Q1	2010 Q1	2016 Q1
<i>Total</i>	125,9	42,0	40,2	5,3	78,5	43,4	41,2	4,4
Agriculture, forestry & fishing	0,1	41,5	24,9	-0,6	0,0	88,6	23,7	-0,2
Manufacturing, mining, quarrying & utilities	9,2	13,0	17,3	-2,6	4,3	14,0	14,3	-7,5
Energy & Environment	1,2	43,8	42,0	2,1	0,5	-8,6	2,6	1,5
Construction	7,3	64,7	59,6	8,5	3,7	88,2	104,7	11,0
Trade	16,6	39,3	33,2	5,5	9,6	47,6	38,9	6,6
Transport	5,4	22,8	18,7	3,4	2,4	23,2	16,5	3,1
Accommodation & food services	3,5	84,9	71,9	4,2	2,5	85,3	74,1	4,6
Information & communication	13,0	39,5	44,2	8,4	10,6	43,4	48,8	5,6
Financial & insurance	10,0	24,7	27,2	1,5	7,7	17,5	20,0	0,0
Real Estate	2,2	60,4	55,0	7,2	1,6	65,7	62,2	8,6
Business services	20,2	60,4	59,9	10,7	15,6	56,6	56,5	6,8
Public administration	0,1	26,8	14,8	-1,2	0,1	19,0	11,8	-0,3
Education	2,9	68,8	60,3	8,1	1,7	69,6	62,2	6,8
Health	7,9	84,1	64,9	3,8	4,5	79,0	57,5	2,3
Personal & cultural services	3,9	43,0	36,8	2,6	3,0	42,7	35,8	3,1
Unspecified	0,2	-20,4	-5,5	-15,0	0,1	43,7	14,3	-27,8
Private sector	103,6	43,9	41,9	5,5	67,7	45,3	43,7	4,2
State	8,6	37,2	33,8	3,8	6,0	33,0	28,0	4,8
Municipal	10,4	33,9	32,1	6,0	3,9	31,2	28,4	6,8
County council	3,3	24,2	30,9	3,1	0,9	32,0	20,0	3,6
Public sector	22,2	33,6	32,6	4,7	10,8	32,2	27,5	5,4

The number of newly registered businesses

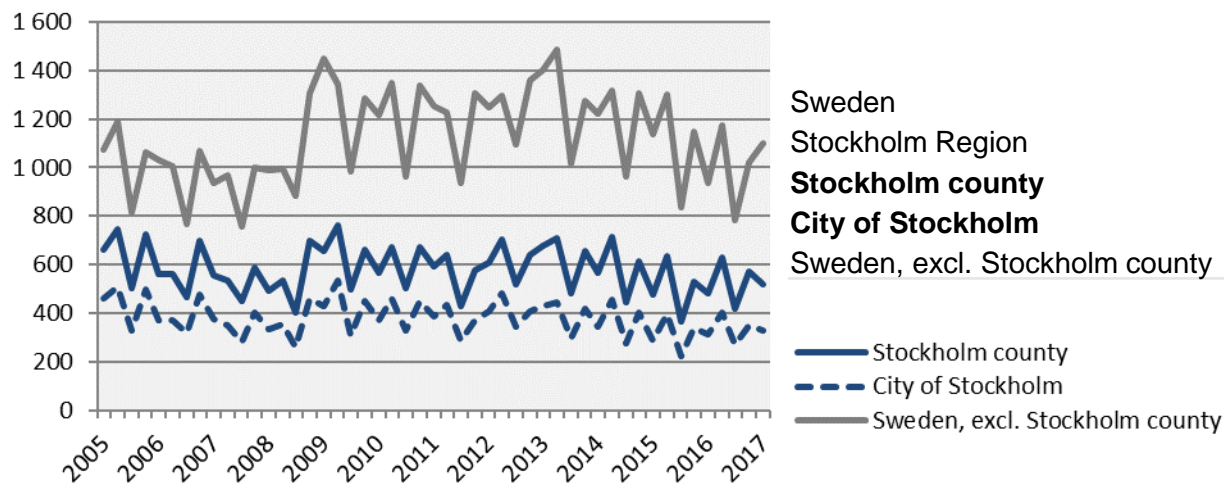


	2017 Q1		Yearly change*	
	Number	Ch., %	Number	Ch., %
Sweden	19 429	2,6	69 293	5,4
Stockholm Region	10 283	2,5	36 665	4,8
Stockholm county	6 852	1,7	24 920	4,9
City of Stockholm	4 050	2,8	14 777	5,2
Sweden, excl. Stockholm county	12 577	3,2	44 373	5,7

— Stockholm county
- - - City of Stockholm
— Sweden, excl. Stockholm county

*Last four quarters

Company bankruptcies

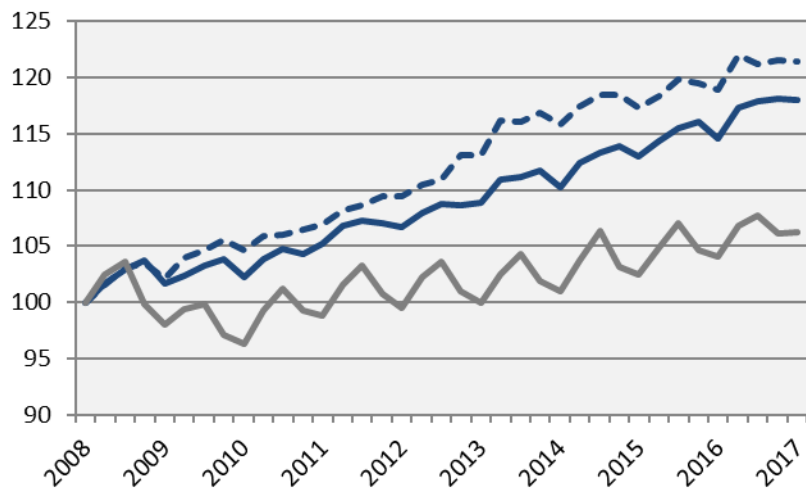


	2017 Q1		Yearly change*	
	Number	Ch., %	Number	Ch., %
Sweden	1 620	14,1	6 219	-0,2
Stockholm Region	837	16,7	3 210	4,2
Stockholm county	519	7,5	2 139	6,4
City of Stockholm	327	4,8	1 351	6,3
Sweden, excl. Stockholm county	1 101	17,5	4 080	-3,3

*Last four quarters

Employment

Index 100 = 2008 Q1



Source: Statistics Sweden

	<i>Number</i>	<i>Growth</i>	<i>Growth (%) since,</i>		
	2017 Q1	Yearly ch.*	2008 Q1	2010 Q1	2016 Q1
Sweden	4 924 400	113 000	8,9	11,6	2,3
Stockholm Region	2 248 100	43 400	11,5	12,2	2,0
Stockholm county	1 208 800	35 300	18,0	15,4	3,0
City of Stockholm	528 600	10 800	21,4	16,1	2,1
Sweden, excl. Stockholm county	3 715 600	77 700	6,3	10,4	2,1

— Stockholm county
- - - City of Stockholm
— Sweden, excl. Stockholm county

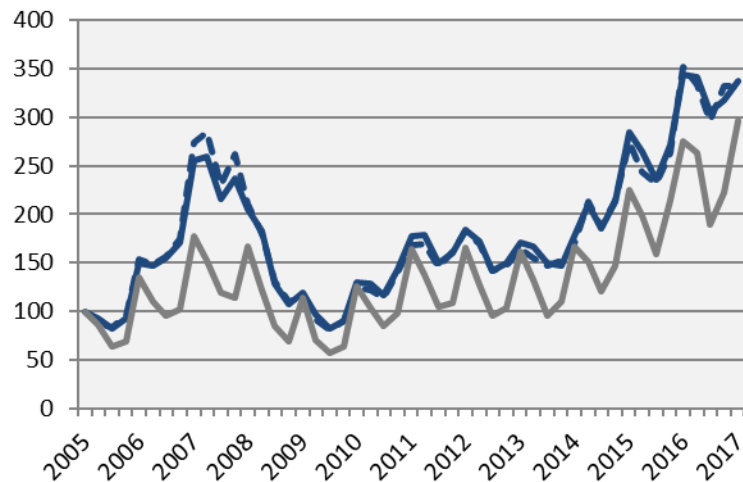
*Last four quarters

The number of employed people in Stockholm County

	<i>Number</i>	<i>Growth</i>	<i>Growth (%) since,</i>		
	2017 Q1	Yearly ch.*	2008 Q1	2010 Q1	2016 Q1
Total	1 208 800	35 300	18,0	15,4	3,0
Agriculture, forestry & fishing	n.d.	n.d.	n.d.	n.d.	n.d.
Manufacturing, mining, quarrying & utilities	58 500	-1 200	0,5	0,2	-2,0
Manufacturing of workshop products	26 700	-3 200	-6,6	-11,0	-10,7
Construction	70 300	1 900	17,2	23,8	2,8
Trade	137 900	-3 100	2,6	8,4	-2,2
Transport	55 600	3 200	4,7	2,0	6,1
Accommodation & food services	49 800	1 700	39,1	34,2	3,5
Information & communication	94 500	3 000	23,7	19,3	3,3
Arts, entertainment, recreation & other services	75 100	4 100	20,2	17,3	5,8
Financial & insurance	300 800	15 300	24,8	17,0	5,4
Public administration	83 700	5 600	29,0	17,1	7,2
Education	128 600	1 400	22,5	16,6	1,1
Health	145 900	7 400	17,6	18,8	5,3
Unspecified	n.d.	n.d.	n.d.	n.d.	n.d.
Employed in Sweden	1 204 600	36 700	18,0	15,4	3,1
Employed abroad	4 100	-1 500	20,6	10,8	-26,8

Number of recently listed positions

Index 100 = 2005 Q1

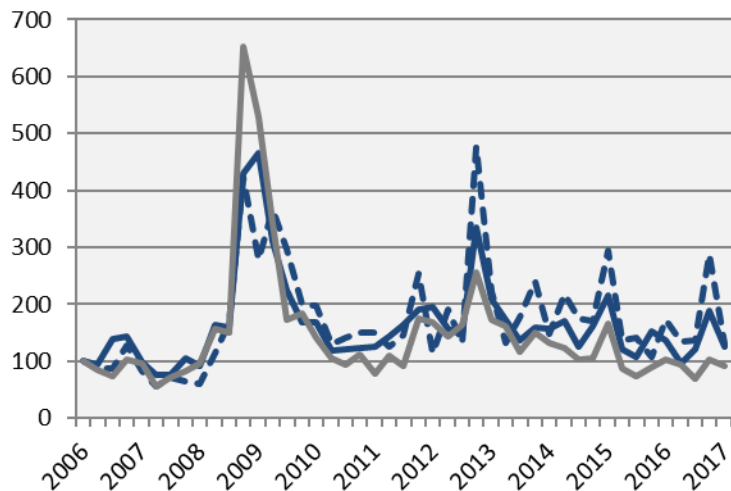


	2017 Q1		Yearly growth*	
	Number	Ch., %	Number	Ch., %
Sweden	383 604	4,9	1 317 789	15,3
Stockholm Region	179 990	3,0	641 801	16,0
Stockholm county	102 181	-2,0	394 549	16,7
City of Stockholm	67 322	-5,3	261 793	18,7
Sweden, excl. Stockholm county	281 423	7,7	923 240	14,7

*Last four quarters

The number of people given notice

Index 100 = 2006 Q1



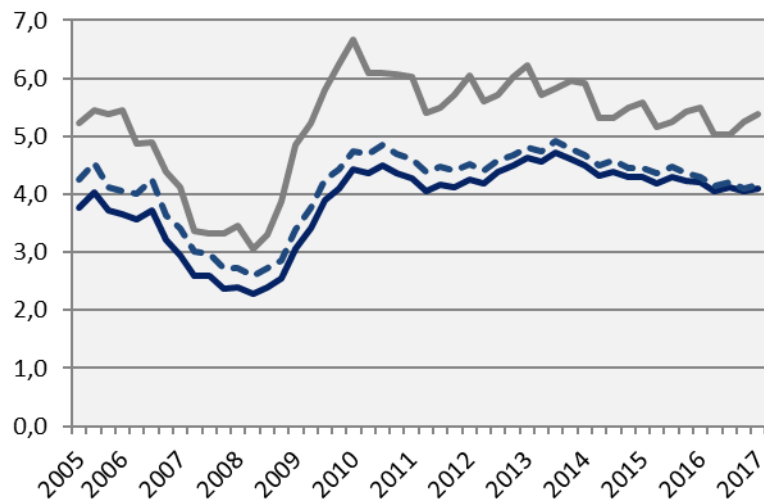
Source: The Labor Exchange

	2017 Q1		Yearly change*	
	Number	Ch., %	Number	Ch., %
Sweden	9 348	-11,2	37 403	1,3
Stockholm Region	4 376	-15,8	17 976	0,8
Stockholm county	2 546	-8,1	10 783	3,0
City of Stockholm	1 153	-24,6	6 097	23,4
Sweden, excl. Stockholm county	6 802	-12,4	26 620	0,7

— Stockholm county
- - - City of Stockholm
— Sweden, excl. Stockholm county

*Last four quarters

Unemployment in relation to the population (%), 15-74 years



Source: The Labor Exchange and Statistics Sweden

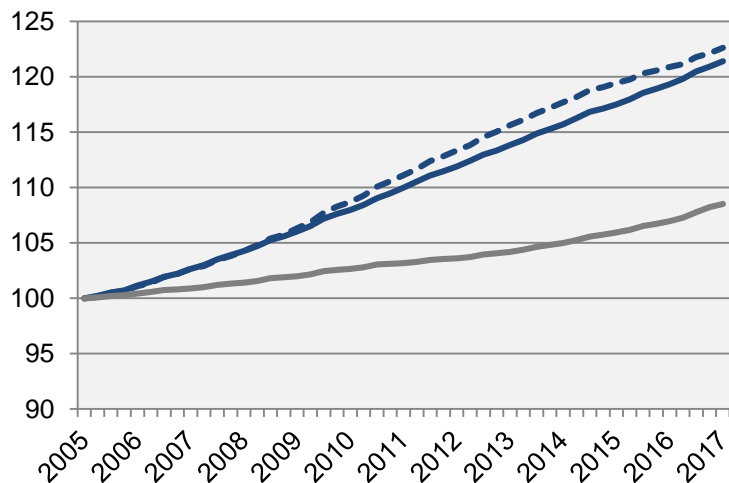
	Number	Yearly change*	Unemployed out of population, 15-74 years		
	2017 Q1		2010 Q1	2016 Q1	2017 Q1
Sweden	376 751	-3 207	6,2	5,2	5,1
Stockholm Region	163 862	-826	5,7	5,0	4,9
Stockholm county	70 090	-520	4,4	4,2	4,1
City of Stockholm	30 078	-594	4,7	4,3	4,2
Sweden, excl. Stockholm county	306 661	-2 687	6,7	5,5	5,4

— Stockholm county
- - - City of Stockholm
— Sweden, excl. Stockholm county

*Last four quarters

Population

Index 100 = 2005 Q1



Source: Statistics Sweden

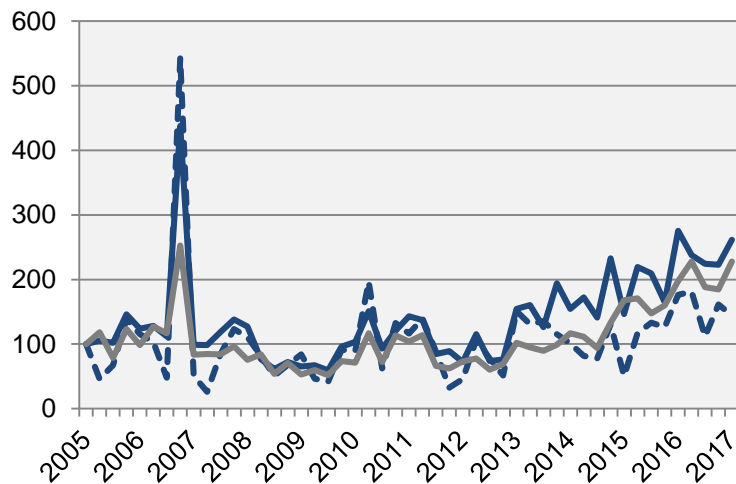
	2017 Q1 (in thousands)	Yearly ch. *	Growth (%) since,		
			2005 Q1	2010 Q1	2016 Q1
Sweden	10 023,9	148,5	11,2	7,2	1,5
Stockholm Region	4 517,4	71,5	14,6	9,1	1,6
Stockholm county	2 277,9	38,6	21,4	12,4	1,7
City of Stockholm	939,2	13,3	22,6	12,8	1,4
Sweden, excl. Stockholm county	7 746,0	109,9	8,5	5,7	1,4

— Stockholm county
- - - City of Stockholm

*Development last four quarters

Number of housing projects started

Index 100 = 2005 Q1



Source: Statistics Sweden

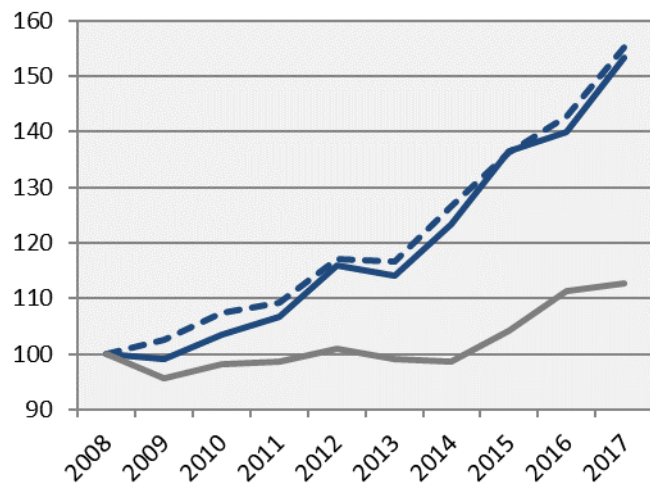
	2017 Q1		Yearly change*	
	Number	Ch., %	Number	Ch., %
Sweden	21 553	9,8	78 301	19,1
Stockholm Region	8 814	-3,9	32 028	10,5
Stockholm county	5 045	-5,0	18 250	8,9
City of Stockholm	1 501	-18,5	6 241	8,2
Sweden, excl. Stockholm county	16 508	15,2	60 051	22,6

 Stockholm county

*Last four quarters

Commercial Accommodations

Index 100 = 2008 Q1 (Q1, 2008 - 2017)



	2017 Q1 (in thousands)	Yearly ch. *	Growth (%) since,		
			2008 Q1	2010 Q1	2016 Q1
Sweden	11 748	62 144	20,0	21,1	3,0
Stockholm Region	5 792	25 868	15,0	14,5	4,5
Stockholm county	2 645	13 670	53,5	48,2	9,6
City of Stockholm	1 786	9 223	55,2	44,5	8,7
Sweden, excl. Stockholm county	9 103	48 474	12,8	15,0	1,3

*Development last four quarters

— Stockholm county
- - - City of Stockholm
— Sweden, excl. Stockholm county

Stockholm Business Region

Stockholm Business Region is responsible for developing and promoting Stockholm as a business and tourist destination under the brand Stockholm - The Capital of Scandinavia.

The aim is to make Stockholm the leading sustainable growth region in Europe.

Stockholm Business Region is owned by the city of Stockholm and has two subsidiaries Invest Stockholm and Visit Stockholm.

For questions: Contact Stefan Frid, Invest Stockholm.
Publisher: Olle Zetterberg, CEO Stockholm Business Region

Stockholm Business Region

P.O. Box 16282

SE-103 25 Stockholm, Sweden

Phone + 46 8 508 280 00

www.visitstockholm.com

www.investstockholm.com

www.stockholmbusinessregion.se

