

Stockholm Economy

Q2 2017

September 2017



Stockholm Economy

2017 Q2

About the report

The report is published each quarter by Stockholm Business Region. The report includes Stockholm County and the City of Stockholm.

Statistics used is collected from Statistics Sweden, The Labour Exchange and The Swedish Companies Registration Office.

The report can be downloaded from:

<http://www.stockholmbusinessregion.se/en/facts--figures/#facts-about-business>

The Stockholm Region is defined as Stockholm County, Uppsala County, Södermanland County, Östergötland County, Örebro County, Västmanland County, Gävleborg County and Dalarna County. Individual county reports for the above mentioned can be found in Swedish here: <http://www.stockholmbusinessalliance.se/konjunkturrapporter/>

Questions can be addressed to Stefan Frid at Invest Stockholm.
Publisher: Olle Zetterberg.

Mostly positive figures for Stockholm

The Stockholm economy continues to develop strongly which is shown by most indicators.

Aggregated gross pay data showed positive growth figures both for Stockholm County and the City of Stockholm compared to the same quarter in 2016. Information and communication, business services, trade and construction where the driving forces behind this development. Even though the number of company bankruptcies increases and newly registered businesses decreases, the sector strengthens by eight times more companies being started than the number of company bankruptcies.

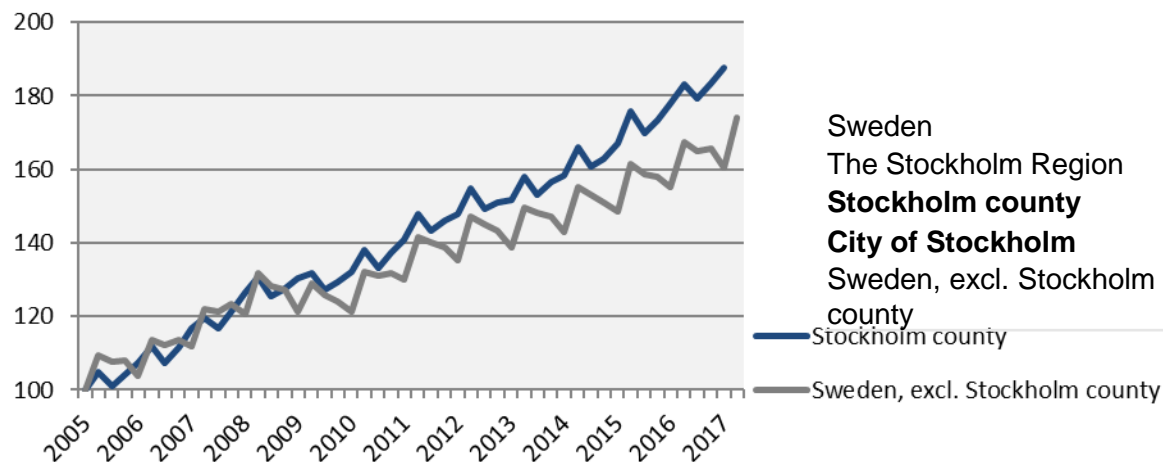
The labour market in Stockholm continued its strong development. During the last four quarters the number of persons employed increased by 30 600. Further the number of persons given notice decreased in both the county and the city. However both the number of people unemployed and the unemployment rate increased compared to the same quarter in 2016. The number of listed positions decreased in Stockholm and also in the rest of the country.

The number of residents in the county and the city increased by 39 500 and 14 200 respectively during the last four quarters, representing increases by 1,8 percent and 1,5 percent. The number of housing projects started increased in both the county and the city in comparison to the same quarter last year. During the last four quarters construction increased in Stockholm County, while decreasing slightly in the City of Stockholm.

Olle Zetterberg
CEO Stockholm Business Region

Economic growth, private sector

Index 100 = 2005 Q1

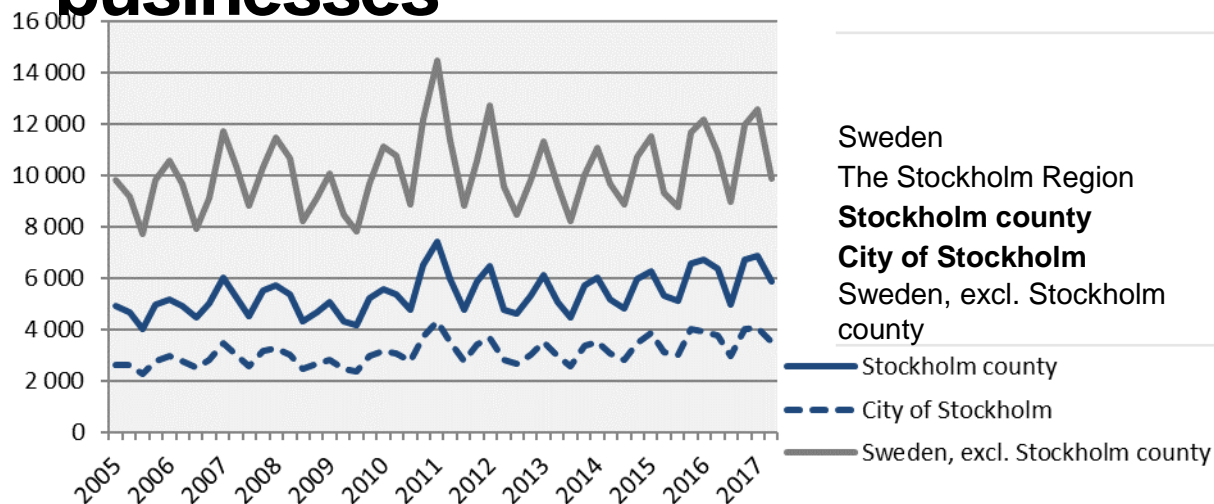


	2017 Q2 Billion SEK	Change (%) since,		
	2005 Q1	2010 Q1	2016 Q2	
Sweden	321,7	80,8	44,9	5,0
The Stockholm Region	165,5	87,6	46,1	5,8
Stockholm county	108,2	95,8	48,2	7,0
City of Stockholm	70,0	i.u.	48,4	5,6
Sweden, excl. Stockholm county	213,5	74,0	43,4	4,0

Economic growth, 2017 Q2

	Stockholm county				City of Stockholm			
	Billion SEK	Growth (%) since,			Billion SEK	Growth (%) since,		
		2009 Q1	2010 Q1	2016 Q2		2009 Q1	2010 Q1	2016 Q2
<i>Total</i>	131,2	48,1	46,2	6,6	81,2	48,2	46,0	5,6
Agriculture, forestry & fishing	0,2	61,7	42,7	-1,9	0,0	101,2	32,1	-2,7
Manufacturing, mining, quarrying & utilities	8,1	-0,3	3,5	-12,9	3,0	-19,8	-19,6	-31,7
Energy & Environment	1,2	55,0	53,1	6,4	0,5	-4,8	6,9	3,5
Construction	8,4	90,7	84,8	9,8	4,2	118,5	137,7	9,7
Trade	16,8	41,7	35,5	5,1	9,4	44,4	35,9	3,8
Transport	5,6	29,6	25,2	4,8	2,5	27,2	20,3	3,7
Accommodation & food services	3,8	101,6	87,4	5,7	2,7	102,2	90,0	6,9
Information & communication	14,8	58,8	64,2	22,2	12,3	67,1	73,4	22,8
Financial & insurance	9,4	17,0	19,3	2,8	7,4	13,2	15,6	2,2
Real Estate	2,5	83,6	77,3	7,1	1,8	81,6	77,7	8,2
Business services	21,7	71,7	71,2	12,5	16,4	64,8	64,7	7,6
Public administration	0,1	38,3	25,2	-1,0	0,1	29,5	21,7	-0,4
Education	3,0	74,6	65,9	7,5	1,8	78,5	70,7	8,5
Health	8,1	87,1	67,6	4,2	4,6	81,5	59,7	2,0
Personal & cultural services	4,1	53,0	46,3	3,7	3,2	53,0	45,6	4,8
Unspecified	0,2	-8,3	8,9	-5,9	0,1	56,6	24,6	-20,1
Private sector	108,2	50,2	48,2	7,0	70,0	50,1	48,4	5,6
State	8,9	43,0	39,4	4,6	6,3	38,6	33,5	5,7
Municipal	10,8	40,0	38,0	5,8	4,1	36,9	33,9	6,5
County council	3,3	25,4	32,2	2,9	0,9	33,3	21,2	3,1
Public sector	23,1	38,8	37,7	4,9	11,2	37,6	32,6	5,8

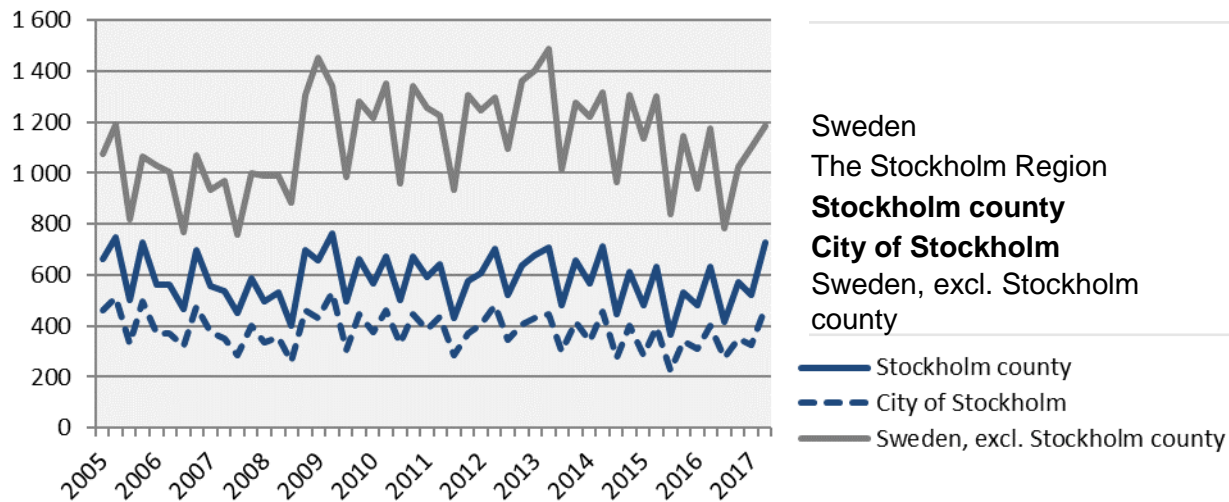
The number of newly registered businesses



	2017 Q2		Yearly change*	
	Number	Ch., %	Number	Ch., %
Sweden	15 770	-8,5	67 829	-0,8
The Stockholm Region	8 530	-7,5	35 977	-1,1
Stockholm county	5 884	-7,7	24 426	-1,6
City of Stockholm	3 525	-6,3	14 541	-1,1
Sweden, excl. Stockholm county	9 886	-8,9	43 403	-0,3

*Last four quarters

Company bankruptcies

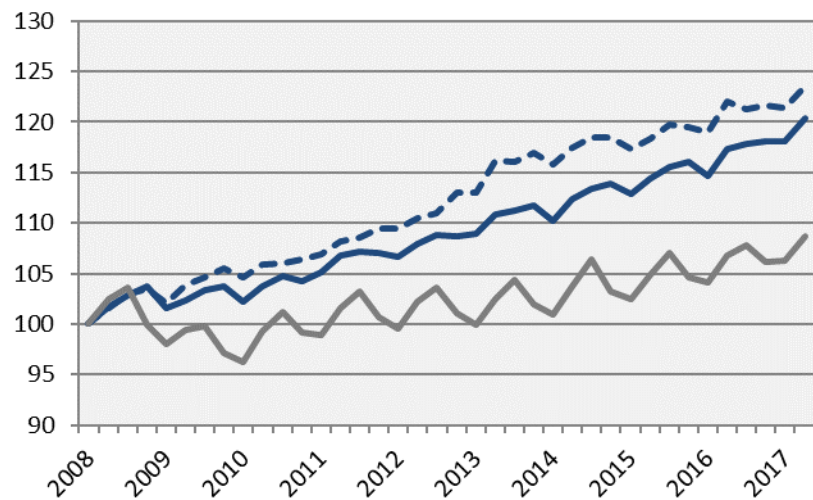


	2017 Q2		Yearly change*	
	Number	Ch., %	Number	Ch., %
Sweden	1 913	6,0	6 327	3,7
The Stockholm Region	1 060	15,0	3 348	10,5
Stockholm county	726	15,1	2 234	11,2
City of Stockholm	471	17,5	1 421	11,5
Sweden, excl. Stockholm county	1 187	1,1	4 093	0,0

*Last four quarters

Employment

Index 100 = 2008 Q1



Source: Statistics Sweden

	<i>Number</i> 2017 Q2	<i>Growth</i> Yearly ch.*	<i>Growth (%) since,</i>		
			2008 Q1	2010 Q1	2016 Q2
Sweden	5 033 900	99 400	11,4	14,1	2,0
The Stockholm Region	2 301 100	38 400	14,1	14,8	1,7
Stockholm county	1 232 000	30 600	20,3	17,6	2,5
City of Stockholm	537 900	6 700	23,6	18,1	1,3
Sweden, excl. Stockholm county	3 801 900	68 800	8,7	13,0	1,8

— Stockholm county
- - - City of Stockholm
— Sweden, excl. Stockholm county

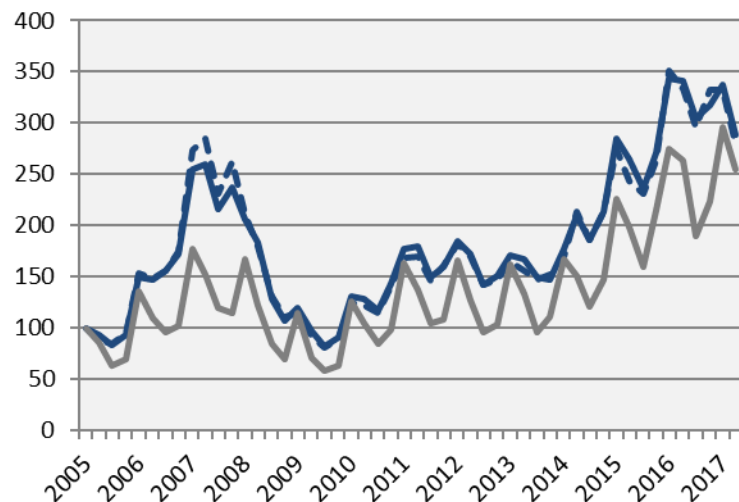
*Last four quarters

The number of employed people in Stockholm County

	<i>Number</i>	<i>Growth</i>	<i>Growth (%) since,</i>		
	2017 Q2	Yearly ch.*	2008 Q1	2010 Q1	2016 Q2
Total	1 232 000	30 600	20,3	17,6	2,5
Agriculture, forestry & fishing	3 400	-400	6,3	6,3	-10,5
Manufacturing, mining, quarrying & utilities	60 500	2 100	4,0	3,6	3,6
Manufacturing of workshop products	28 100	-700	-1,7	-6,3	-2,4
Construction	69 400	300	15,7	22,2	0,4
Trade	143 600	1 000	6,8	12,9	0,7
Transport	57 300	1 700	7,9	5,1	3,1
Accommodation & food services	51 500	3 600	43,9	38,8	7,5
Information & communication	98 800	7 600	29,3	24,7	8,3
Arts, entertainment, recreation & other services	73 800	1 600	18,1	15,3	2,2
Financial & insurance	303 300	4 500	25,8	18,0	1,5
Public administration	86 100	3 500	32,7	20,4	4,2
Education	129 500	2 900	23,3	17,4	2,3
Health	150 200	4 000	21,0	22,3	2,7
Unspecified	n.d.	n.d.	n.d.	n.d.	n.d.
Employed in Sweden	1 228 600	31 100	20,4	17,7	2,6
Employed abroad	3 400	-500	0,0	-8,1	-12,8

Number of recently listed positions

Index 100 = 2005 Q1



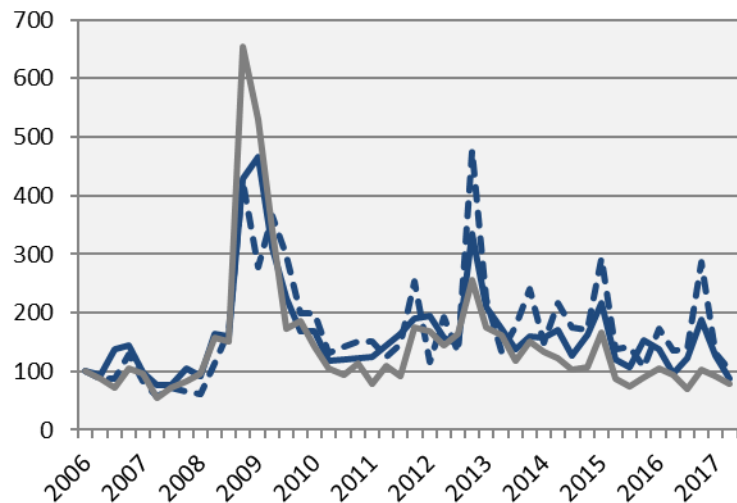
	2017 Q2		Yearly growth*	
	Number	Ch., %	Number	Ch., %
Sweden	328 852	-6,9	1 293 336	5,4
The Stockholm Region	148 125	-11,7	622 102	5,2
Stockholm county	87 503	-15,4	378 655	4,8
City of Stockholm	56 565	-16,1	250 914	5,1
Sweden, excl. Stockholm county	241 349	-3,4	914 681	5,6

*Last four quarters

— Stockholm county
 - - - City of Stockholm
 — Sweden, excl. Stockholm county

The number of people given notice

Index 100 = 2006 Q1

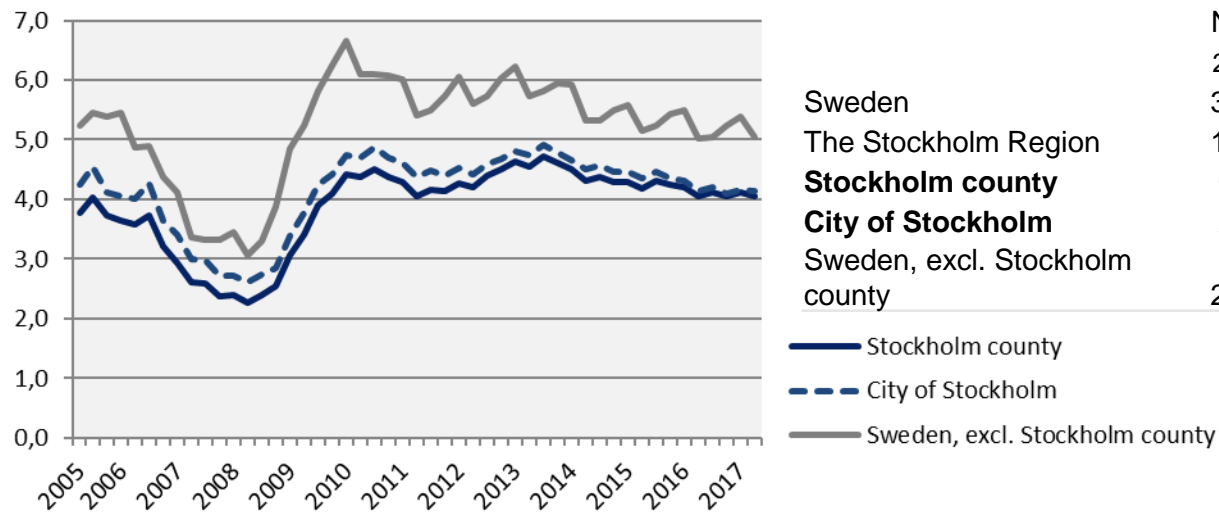


	2017 Q2		Yearly change*	
	Number	Ch., %	Number	Ch., %
Sweden	7 701	-14,2	36 127	-2,1
The Stockholm Region	3 170	-15,6	17 390	-1,8
Stockholm county	1 781	-8,7	10 613	6,4
City of Stockholm	897	-25,1	5 797	17,6
Sweden, excl. Stockholm county	5 920	-15,7	25 514	-5,3

— Stockholm county
- - - City of Stockholm
— Sweden, excl. Stockholm county

*Last four quarters

Unemployment in relation to the population (%), 15-74 years



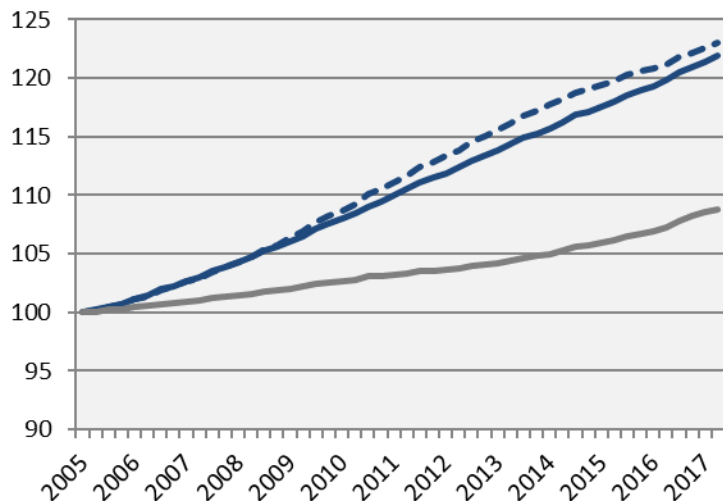
Source: The Labor Exchange and Statistics Sweden

	Number	Yearly change*	Unemployed out of population, 15-74 years		
	2017 Q2		2010 Q1	2016 Q2	2017 Q2
Sweden	356 444	4 698	6,2	4,8	4,8
The Stockholm Region	157 579	2 516	5,7	4,7	4,7
Stockholm county	69 407	1 326	4,4	4,0	4,1
City of Stockholm	29 874	380	4,7	4,1	4,1
Sweden, excl. Stockholm county	287 037	3 373	6,7	5,0	5,0

*Last four quarters

Population

Index 100 = 2005 Q1



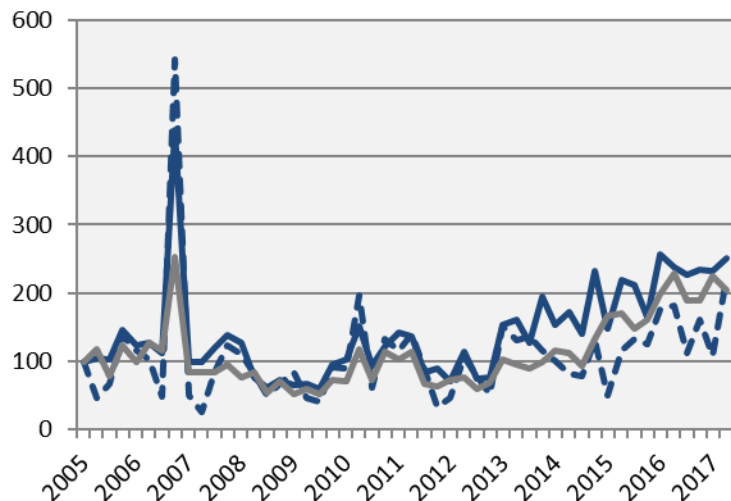
	2017 Q2 (in thousands)	Yearly ch. * (in thousands)	Growth (%) since,		
			2005 Q1	2010 Q1	2016 Q2
Sweden	10 053,1	146,7	11,5	7,5	1,5
The Stockholm Region	4 533,6	72,0	15,0	9,5	1,6
Stockholm county	2 288,0	39,5	21,9	12,9	1,8
City of Stockholm	942,4	14,2	23,0	13,2	1,5
Sweden, excl. Stockholm county	7 765,1	107,3	8,8	6,0	1,4

— Stockholm county
- - - City of Stockholm
— Sweden, excl. Stockholm county

*Last four quarters

Number of housing projects started

Index 100 = 2005 Q1



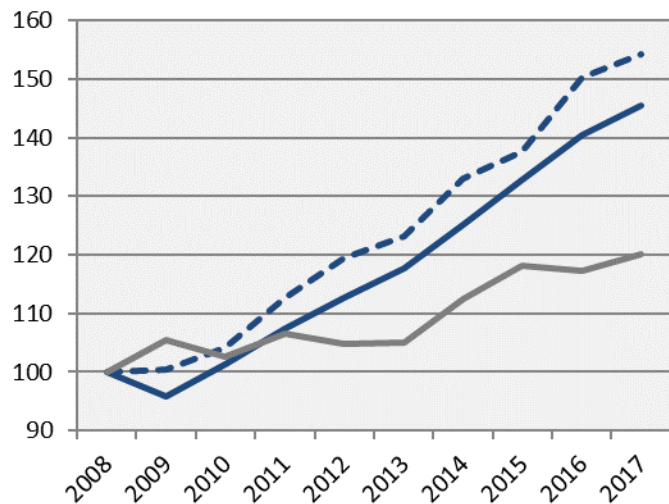
	2017 Q2		Yearly change*	
	Number	Ch., %	Number	Ch., %
Sweden	19 667	-7,2	76 810	9,5
The Stockholm Region	8 932	4,9	32 344	8,5
Stockholm county	4 859	5,6	18 249	8,5
City of Stockholm	2 336	23,6	6 312	-2,0
Sweden, excl. Stockholm county	14 808	-10,8	58 561	9,8

— Stockholm county
- - - City of Stockholm
— Sweden, excl. Stockholm county

*Last four quarters

Commercial Accommodations

Index 100 = 2008 Q2 (Q2, 2008 - 2017)



	2017 Q2 (in thousands)	Yearly ch. *	Growth (%) since,		
			2008 Q2	2010 Q2	2016 Q2
Sweden	15 049	62 487	25,3	22,5	2,6
The Stockholm Region	6 276	26 041	29,1	25,6	3,0
Stockholm county	3 617	13 784	45,4	43,5	3,5
City of Stockholm	2 441	9 285	54,2	48,2	2,6
Sweden, excl. Stockholm county	11 432	48 703	20,1	17,1	2,4

*Last four quarters

Stockholm Business Region

Stockholm Business Region is responsible for developing and promoting Stockholm as a business and tourist destination under the brand Stockholm - The Capital of Scandinavia.

The aim is to make Stockholm the leading sustainable growth region in Europe.

Stockholm Business Region is owned by the city of Stockholm and has two subsidiaries Invest Stockholm and Visit Stockholm.

For questions: Contact Stefan Frid, Invest Stockholm.
Publisher: Olle Zetterberg, CEO Stockholm Business Region

Stockholm Business Region

P.O. Box 16282

SE-103 25 Stockholm, Sweden

Phone + 46 8 508 280 00

www.visitstockholm.com

www.investstockholm.com

www.stockholmbusinessregion.se

