

Stockholm Economy

Q3 2017

December 2017



Stockholm Economy

2017 Q3

About the report

The report is published each quarter by Stockholm Business Region. The report includes Stockholm County and the City of Stockholm.

Statistics used is collected from Statistics Sweden, The Labour Exchange and The Swedish Companies Registration Office.

The report can be downloaded from:

<http://www.stockholmbusinessregion.se/en/facts-figures/#facts-about-business>

The Stockholm Region is defined as Stockholm County, Uppsala County, Södermanland County, Östergötland County, Örebro County, Västmanland County, Gävleborg County and Dalarna County. Individual county reports for the above mentioned can be found in Swedish here: <http://www.stockholmbusinessalliance.se/konjunkturrapporter/>

Questions can be addressed to Stefan Frid at Invest Stockholm.
Publisher: Olle Zetterberg.

Mostly positive figures for Stockholm

The Stockholm economy continues to develop strongly which is shown by most indicators.

Aggregated gross pay data showed positive growth figures both for Stockholm County and the City of Stockholm compared to the same quarter in 2016. Information and communication, construction, financial and insurance and education where the driving forces behind this development. Also, the number of company bankruptcies decreases and newly registered businesses increases, the sector strengthens by 14 times more companies being started than the number of company bankruptcies.

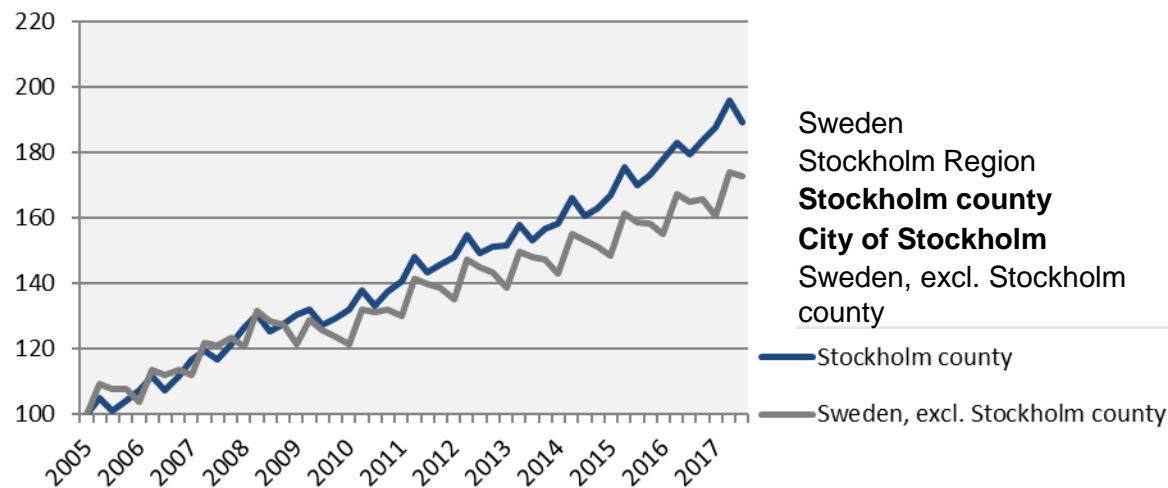
The labour market in Stockholm continues its strong development. During the last four quarters the number of persons employed increased by 30 000. Further the number of persons given notice decreased in both the county and the city the unemployment rate was the same as in the third quarter 2016. The number of listed positions did however decrease in Stockholm and also in the rest of the country.

The number of residents in the county and the city increased by 38 800 and 14 500 respectively during the last four quarters, representing increases by 1,7 percent and 1,6 percent. The number of housing projects started increased in both the county and the city in comparison to the same quarter last year. During the last four quarters construction increased in both the Stockholm County and the City of Stockholm.

Olle Zetterberg
CEO Stockholm Business Region

Economic growth, private sector

Index 100 = 2005 Q1

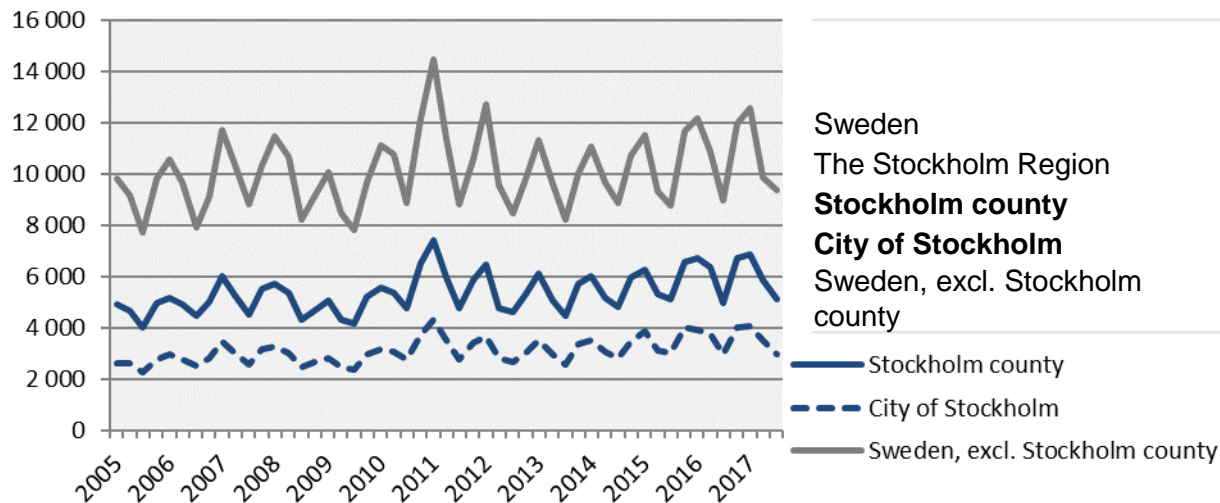


	2017 Q3 Billion SEK	Change (%) since,		
		2005 Q1	2010 Q1	2016 Q3
Sweden	316,5	77,9	42,6	5,0
Stockholm Region	161,2	82,7	42,2	4,8
Stockholm county	104,6	89,3	43,2	5,5
City of Stockholm	68,1	n.d.	44,4	5,0
Sweden, excl. Stockholm county	211,9	72,7	42,3	4,7

Economic growth, 2017 Q3

	Stockholm county				City of Stockholm			
	Billion SEK	Growth (%) since,			Billion SEK	Growth (%) since,		
		2009 Q1	2010 Q1	2016 Q3		2009 Q1	2010 Q1	2016 Q3
<i>Total</i>	127,9	44,3	42,5	5,3	79,4	44,9	42,7	5,0
Agriculture, forestry & fishing	0,2	59,6	40,9	3,5	0,0	117,6	42,8	1,3
Manufacturing, mining, quarrying & utilities	7,6	-7,1	-3,5	-13,6	2,8	-25,3	-25,1	-33,1
Energy & Environment	1,2	47,0	45,1	3,4	0,5	-9,0	2,2	2,2
Construction	8,1	83,6	77,9	10,4	4,0	106,9	125,0	10,7
Trade	16,9	42,7	36,5	4,1	9,6	48,0	39,3	4,3
Transport	5,7	31,4	27,0	4,8	2,5	29,2	22,2	3,1
Accommodation & food services	3,9	110,6	95,8	5,0	2,8	108,3	95,7	6,1
Information & communication	14,2	51,7	56,9	14,2	11,8	60,1	66,2	14,0
Financial & insurance	8,4	4,1	6,1	9,1	6,6	-0,2	1,9	9,3
Real Estate	2,2	62,5	57,0	6,6	1,6	62,3	58,9	6,7
Business services	20,3	61,1	60,7	7,4	16,0	61,0	60,9	7,4
Public administration	0,1	43,2	29,6	0,5	0,1	34,8	26,7	3,0
Education	3,0	74,5	65,7	7,9	1,8	77,7	70,0	9,7
Health	8,3	93,6	73,5	4,2	4,7	86,4	64,0	1,7
Personal & cultural services	4,2	54,4	47,6	4,6	3,2	53,8	46,3	5,7
Unspecified	0,2	-20,9	-6,0	-6,7	0,1	52,2	21,1	7,8
Private sector	104,6	45,2	43,2	5,5	68,1	46,0	44,4	5,0
State	8,9	42,5	39,0	3,8	6,2	37,1	32,0	3,5
Municipal	11,0	42,7	40,7	5,6	4,2	41,3	38,2	6,0
County council	3,4	29,2	36,2	2,8	0,9	37,3	24,9	3,0
Public sector	23,4	40,5	39,4	4,5	11,3	38,6	33,6	4,4

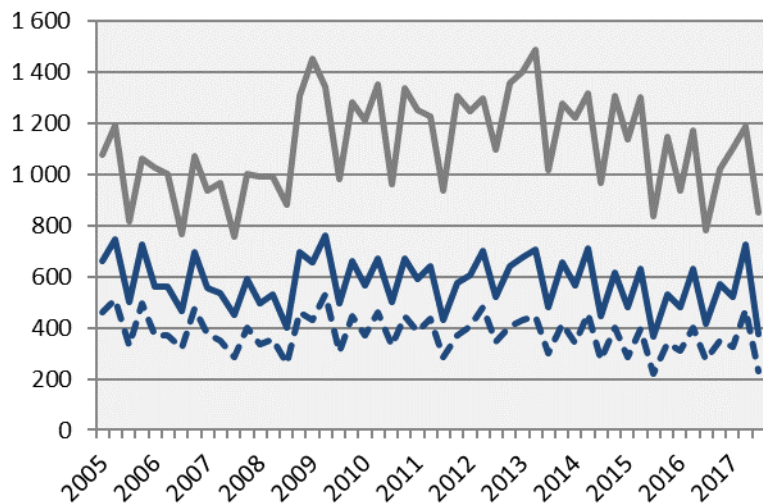
The number of newly registered businesses



	2017 Q3		Yearly change*	
	Number	Ch., %	Number	Ch., %
Sweden	14 504	4,1	68 394	0,0
The Stockholm Region	7 688	4,6	36 317	0,1
Stockholm county	5 141	3,5	24 601	-0,3
City of Stockholm	2 968	0,1	14 544	-0,8
Sweden, excl. Stockholm county	9 363	4,3	43 793	0,2

*Last four quarters

Company bankruptcies



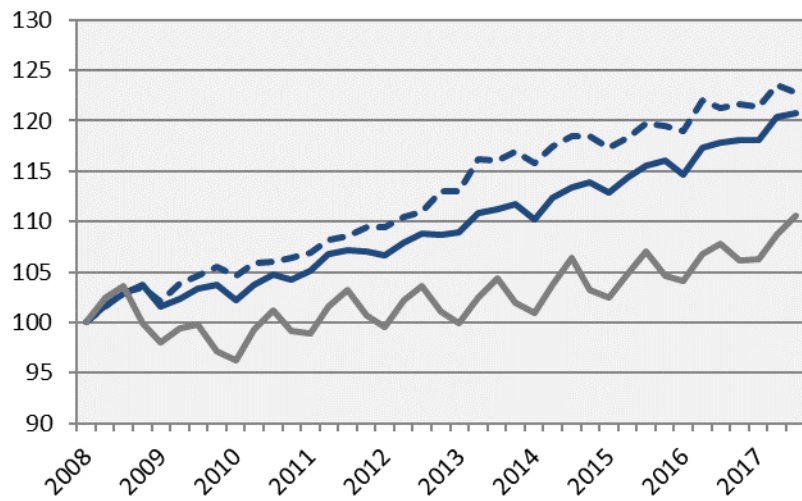
	2017 Q3		Yearly change*	
	Number	Ch., %	Number	Ch., %
Sweden	1 228	2,5	6 357	4,2
The Stockholm Region	581	-4,3	3 322	8,6
Stockholm county	376	-9,6	2 194	6,5
City of Stockholm	232	-15,0	1 380	4,2
Sweden, excl. Stockholm county	852	9,0	4 163	3,1

— Stockholm county
 - - - City of Stockholm
 — Sweden, excl. Stockholm county

*Last four quarters

Employment

Index 100 = 2008 Q1



	<i>Number</i>	<i>Growth</i>	<i>Growth (%) since,</i>		
	2017 Q3	Yearly ch.*	2008 Q1	2010 Q1	2016 Q3
Sweden	5 103 800	130 200	12,9	15,7	2,6
Stockholm Region	2 329 000	58 000	15,5	16,2	2,6
Stockholm county	1 236 700	30 000	20,8	18,1	2,5
City of Stockholm	534 300	6 600	22,7	17,4	1,3
Sweden, excl. Stockholm county	3 867 100	100 200	10,6	14,9	2,7

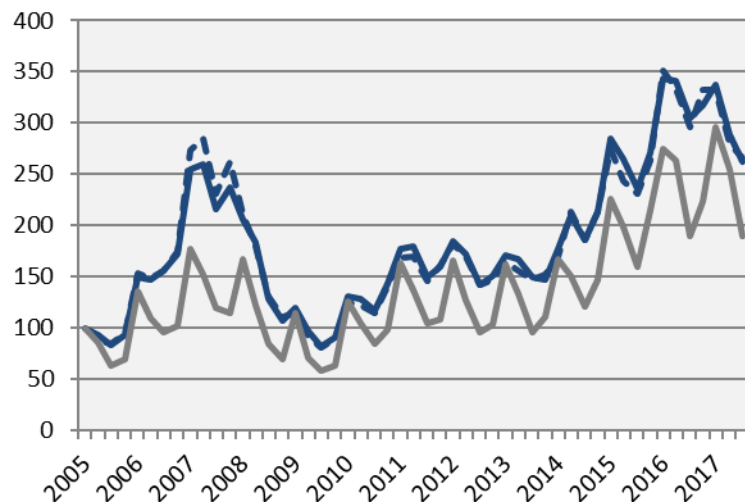
*Last four quarters

The number of employed people in Stockholm County

	<i>Number</i>	<i>Growth</i>	<i>Growth (%) since,</i>		
	2017 Q3	Yearly ch.*	2008 Q1	2010 Q1	2016 Q3
Total	1 236 700	30 000	20,8	18,1	2,5
Agriculture, forestry & fishing	n.d.	n.d.	n.d.	n.d.	n.d.
Manufacturing, mining, quarrying & utilities	61 400	500	5,5	5,1	0,8
Manufacturing of workshop products	26 500	-3 100	-7,3	-11,7	-10,5
Construction	68 200	-500	13,7	20,1	-0,7
Trade	147 800	4 300	10,0	16,2	3,0
Transport	58 300	500	9,8	7,0	0,9
Accommodation & food services	52 200	3 200	45,8	40,7	6,5
Information & communication	103 800	7 400	35,9	31,1	7,7
Arts, entertainment, recreation & other services	74 600	2 000	19,4	16,6	2,8
Financial & insurance	299 400	-200	24,2	16,5	-0,1
Public administration	89 100	8 300	37,3	24,6	10,3
Education	127 900	8 600	21,8	16,0	7,2
Health	146 000	-2 700	17,6	18,9	-1,8
Unspecified	n.d.	n.d.	n.d.	n.d.	n.d.
Employed in Sweden	1 232 000	29 200	20,7	18,1	2,4
Employed abroad	4 700	700	38,2	27,0	17,5

Number of recently listed positions

Index 100 = 2005 Q1

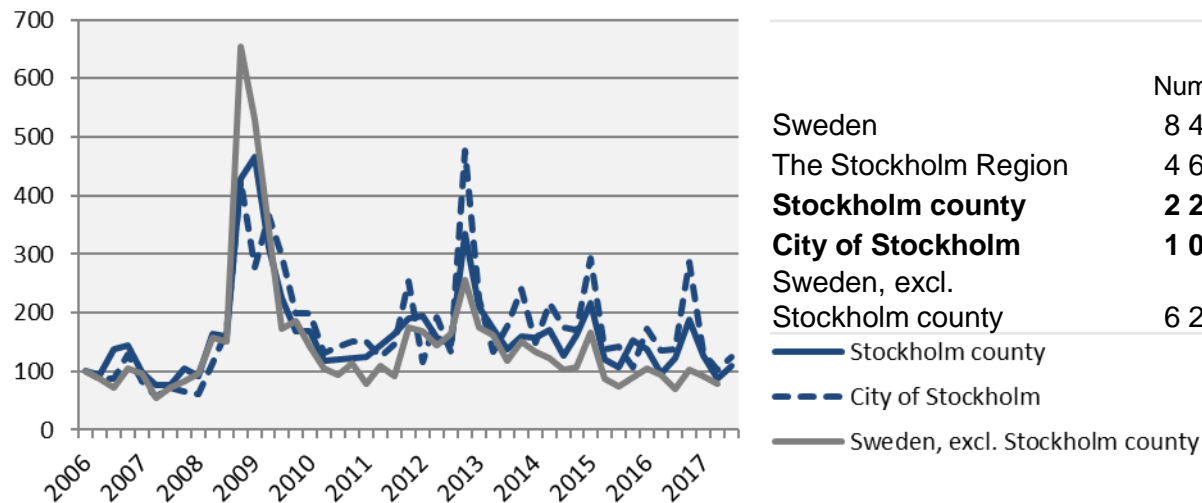


	2017 Q3		Yearly growth*	
	Number	Ch., %	Number	Ch., %
Sweden	260 024	-4,6	1 280 719	0,3
The Stockholm Region	124 100	-11,6	605 874	-2,2
Stockholm county	79 370	-14,3	365 452	-4,5
City of Stockholm	53 896	-10,1	244 886	-2,7
Sweden, excl. Stockholm county	180 654	0,3	915 267	2,3

*Last four quarters

The number of people given notice

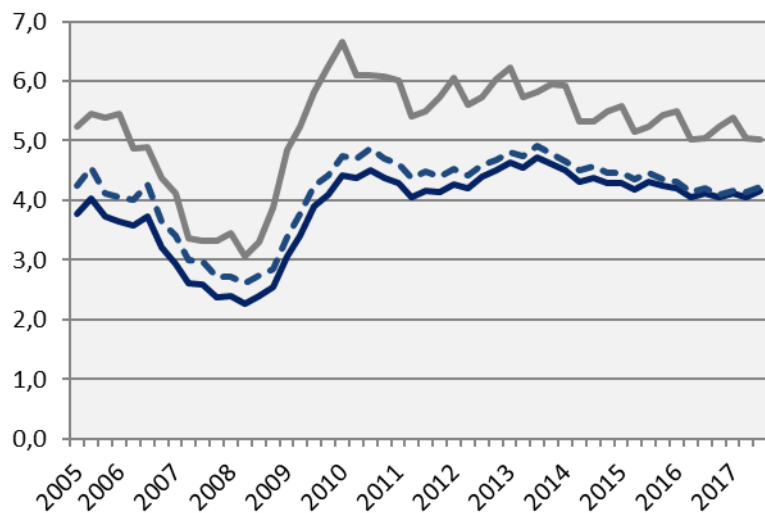
Index 100 = 2006 Q1



	2017 Q3		Yearly change*	
	Number	Ch., %	Number	Ch., %
Sweden	8 420	10,4	36 923	0,3
The Stockholm Region	4 606	18,6	18 113	1,4
Stockholm county	2 216	-9,8	10 372	1,0
City of Stockholm	1 099	-9,5	5 681	16,1
Sweden, excl. Stockholm county	6 204	20,1	26 551	0,0

*Last four quarters

Unemployment in relation to the population (%), 15-74 years



Source: The Labor Exchange and Statistics Sweden

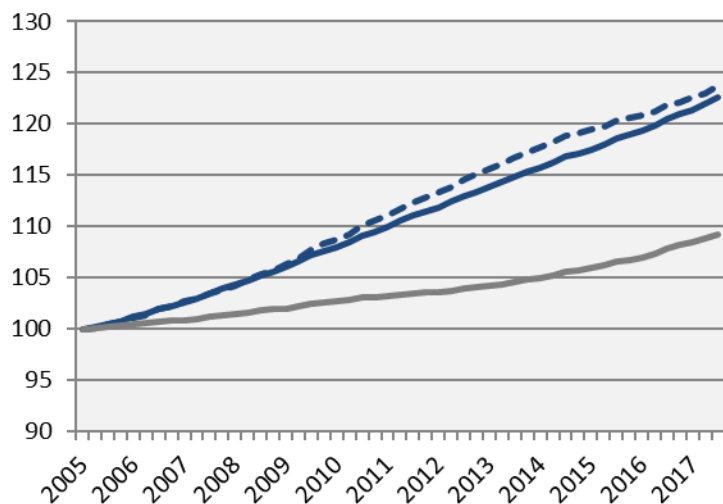
	Number	Yearly change*	Unemployed out of population, 15-74 years		
	2017 Q3		2010 Q1	2016 Q3	2017 Q3
Sweden	357 878	3 474	6,2	4,8	4,8
The Stockholm Region	159 244	1 957	5,7	4,7	4,7
Stockholm county	71 197	1 730	4,4	4,1	4,1
City of Stockholm	30 635	567	4,7	4,2	4,2
Sweden, excl. Stockholm county	286 681	1 744	6,7	5,0	5,0

*Last four quarters

— Stockholm county
 - - - City of Stockholm
 — Sweden, excl. Stockholm county

Population

Index 100 = 2005 Q1



Source: Statistics Sweden

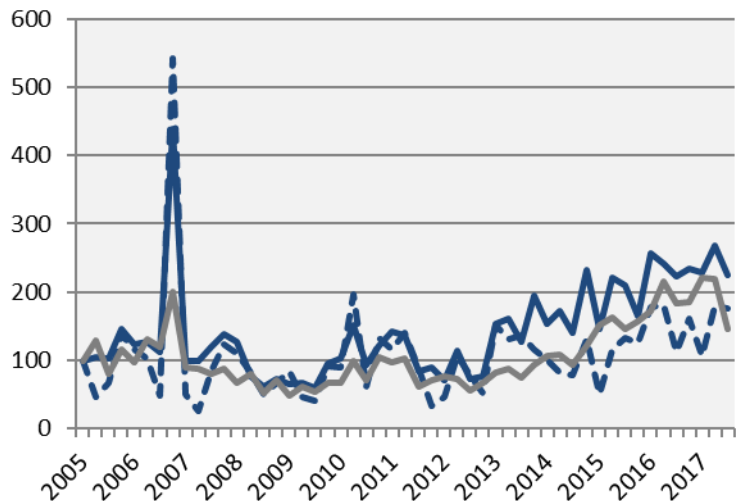
	2017 Q3 (in thousands)	Yearly ch. * (in thousands)	Growth (%) since,		
			2005 Q1	2010 Q1	2016 Q3
Sweden	10 093,7	139,3	12,0	7,9	1,4
The Stockholm Region	4 554,0	69,3	15,5	10,0	1,5
Stockholm county	2 299,6	38,8	22,6	13,5	1,7
City of Stockholm	947,4	14,5	23,7	13,8	1,6
Sweden, excl. Stockholm county	7 794,1	100,5	9,2	6,4	1,3

— Stockholm county
- - - City of Stockholm
— Sweden, excl. Stockholm county

*Last four quarters

Number of housing projects started

Index 100 = 2005 Q1



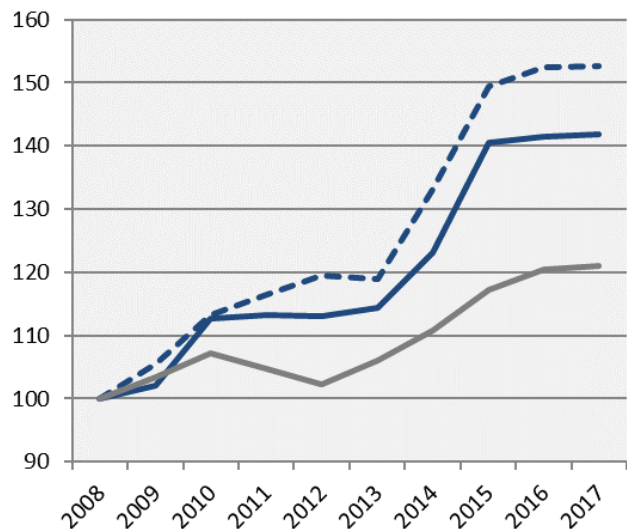
	2017 Q3		Yearly change*	
	Number	Ch., %	Number	Ch., %
Sweden	12 265	-14,0	60 319	6,2
The Stockholm Region	6 563	-16,8	31 545	0,3
Stockholm county	4 340	0,7	18 442	7,8
City of Stockholm	1 829	56,7	6 500	4,3
Sweden, excl. Stockholm county	7 925	-20,4	41 877	5,6

— Stockholm county
- - - City of Stockholm
— Sweden, excl. Stockholm county

*Last four quarters

Commercial Accommodations

Index 100 = 2008 Q3 (Q3, 2008 - 2017)



	2017 Q3 (in thousands)	Yearly ch.*	Growth (%) since,		
			2008 Q3	2010 Q3	2016 Q3
Sweden	25 701	63 193	24,2	15,1	0,6
The Stockholm Region	8 867	26 077	24,8	16,7	-1,6
Stockholm county	4 450	13 912	41,8	25,9	0,3
City of Stockholm	2 918	9 289	52,6	34,8	0,2
Sweden, excl. Stockholm county	21 251	49 281	21,1	13,0	0,6

— Stockholm county
- - - City of Stockholm
— Sweden, excl. Stockholm county

*Last four quarters

Stockholm Business Region

Stockholm Business Region is responsible for developing and promoting Stockholm as a business and tourist destination under the brand Stockholm - The Capital of Scandinavia.

The aim is to make Stockholm the leading sustainable growth region in Europe.

Stockholm Business Region is owned by the city of Stockholm and has two subsidiaries Invest Stockholm and Visit Stockholm.

For questions: Contact Stefan Frid, Invest Stockholm.
Publisher: Olle Zetterberg, CEO Stockholm Business Region

Stockholm Business Region

P.O. Box 16282

SE-103 25 Stockholm, Sweden

Phone + 46 8 508 280 00

www.visitstockholm.com

www.investstockholm.com

www.stockholmbusinessregion.se

